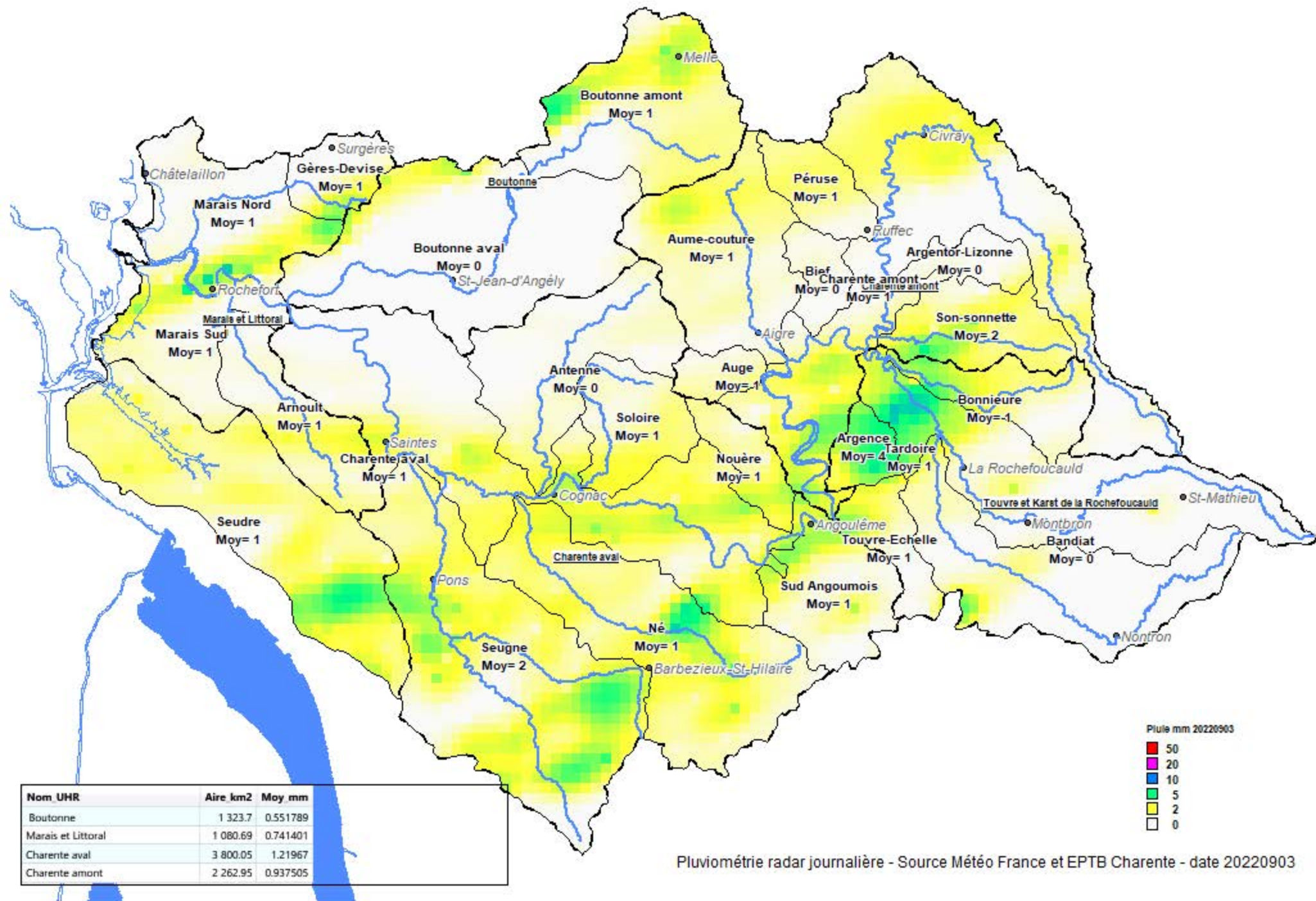
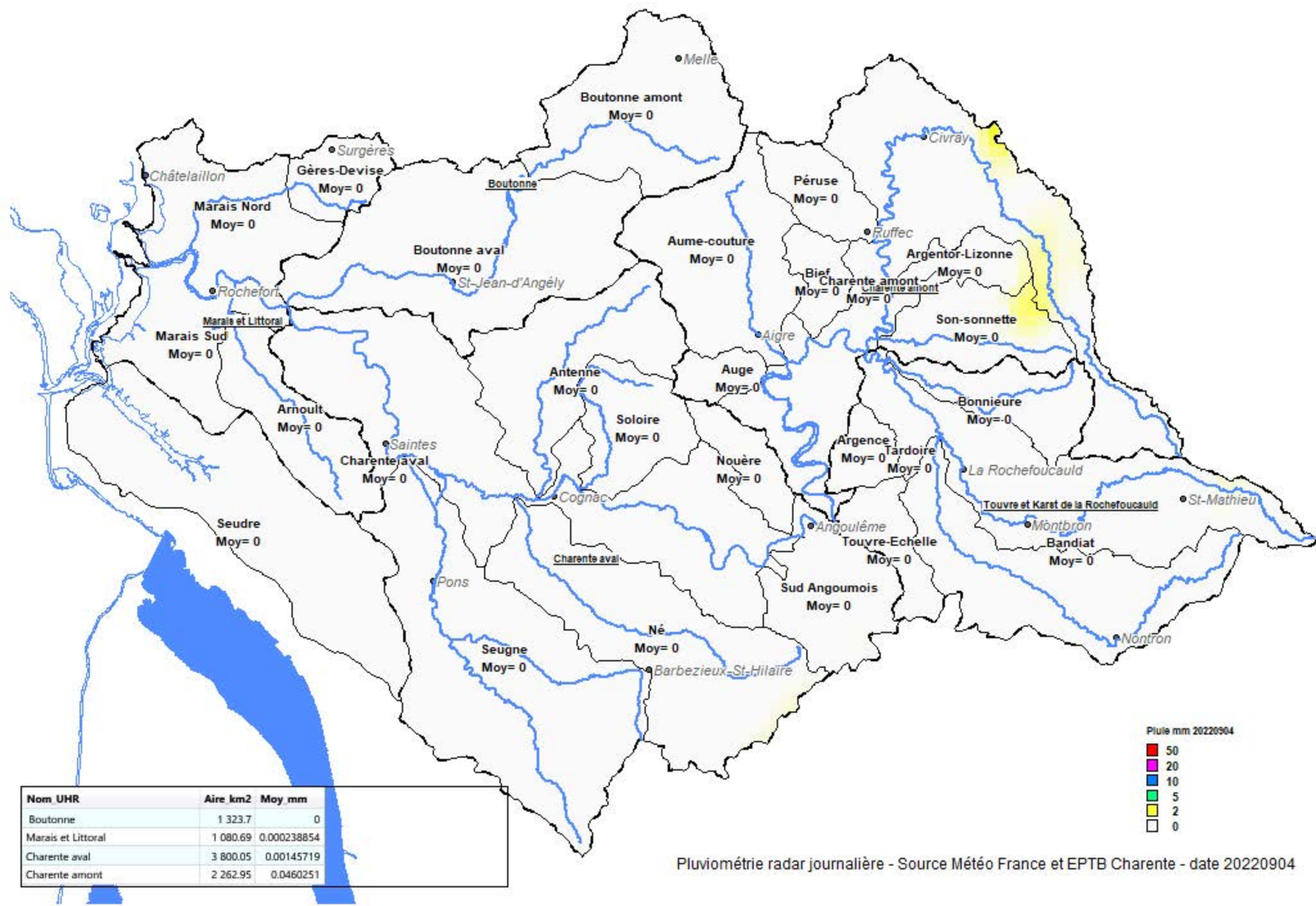


Pluviométrie radar journalière - Source Météo France et EPTB Charente - date 20220902



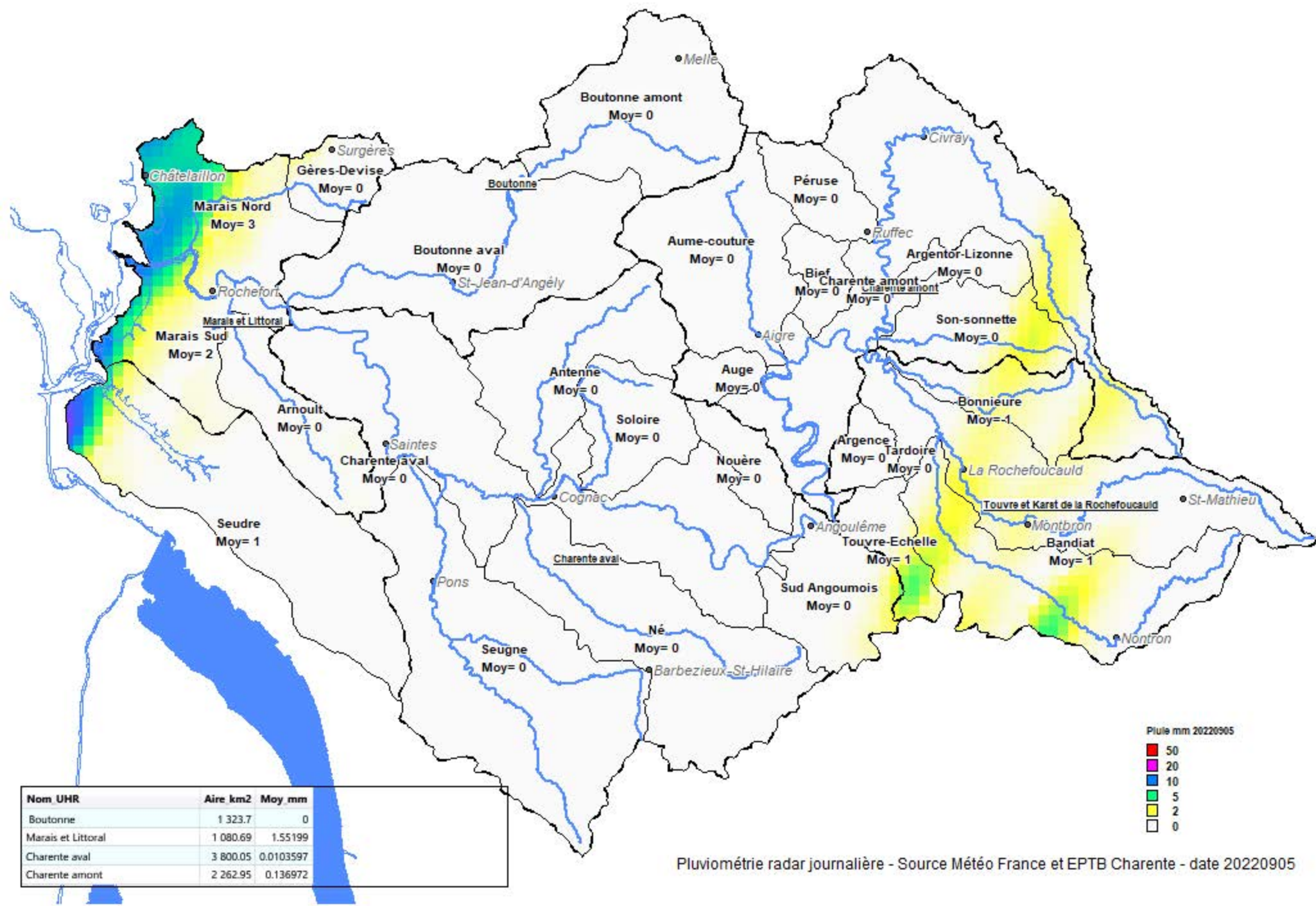
Pluviométrie radar journalière - Source Météo France et EPTB Charente - date 20220903



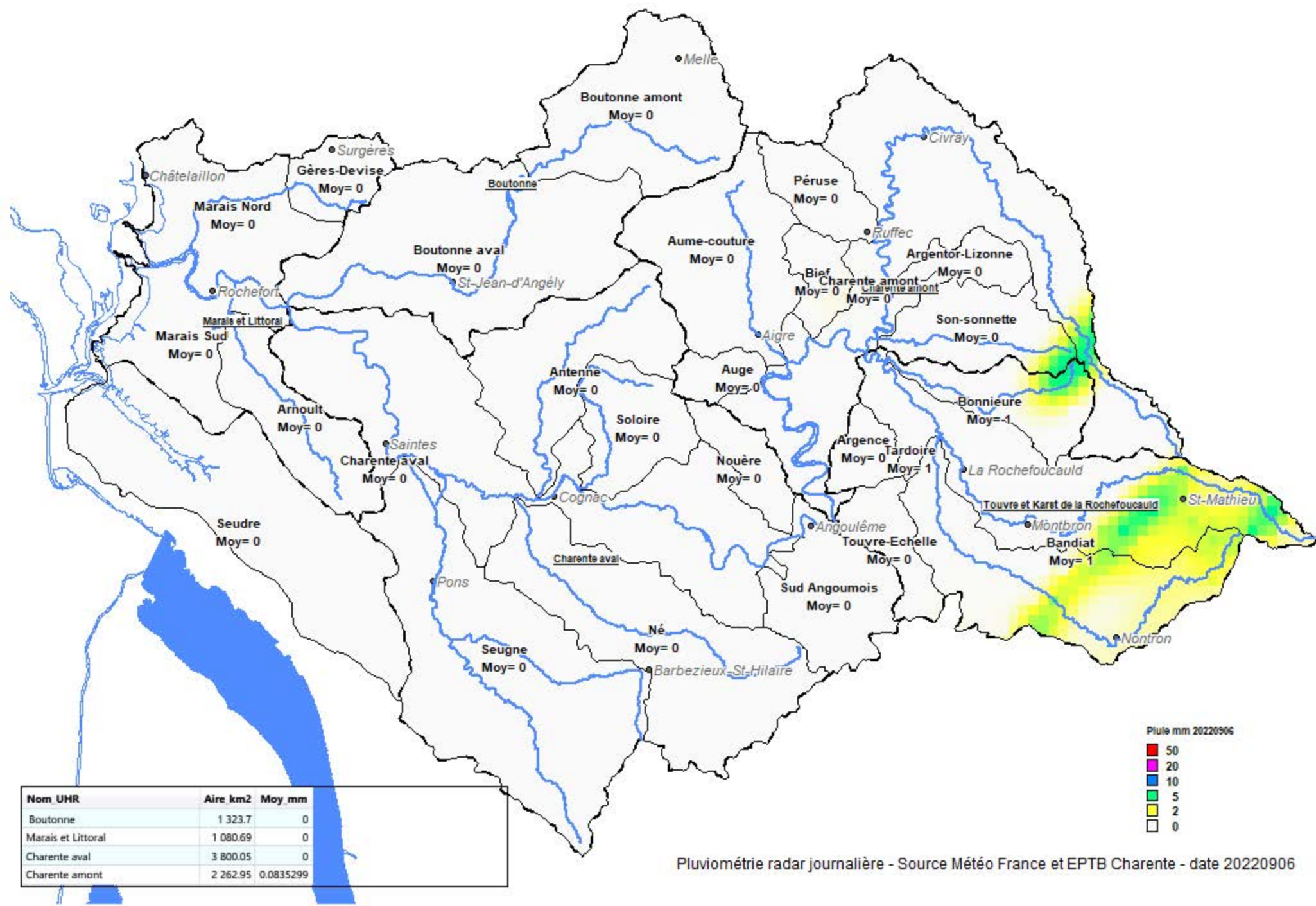
| Nom UHR | Aire km2 | Moy mm |
|--------------------|----------|-------------|
| Boutonne | 1 323.7 | 0 |
| Marais et Littoral | 1 080.69 | 0.000238854 |
| Charente aval | 3 800.05 | 0.00145719 |
| Charente amont | 2 262.95 | 0.0460251 |



Pluviométrie radar journalière - Source Météo France et EPTB Charente - date 20220904



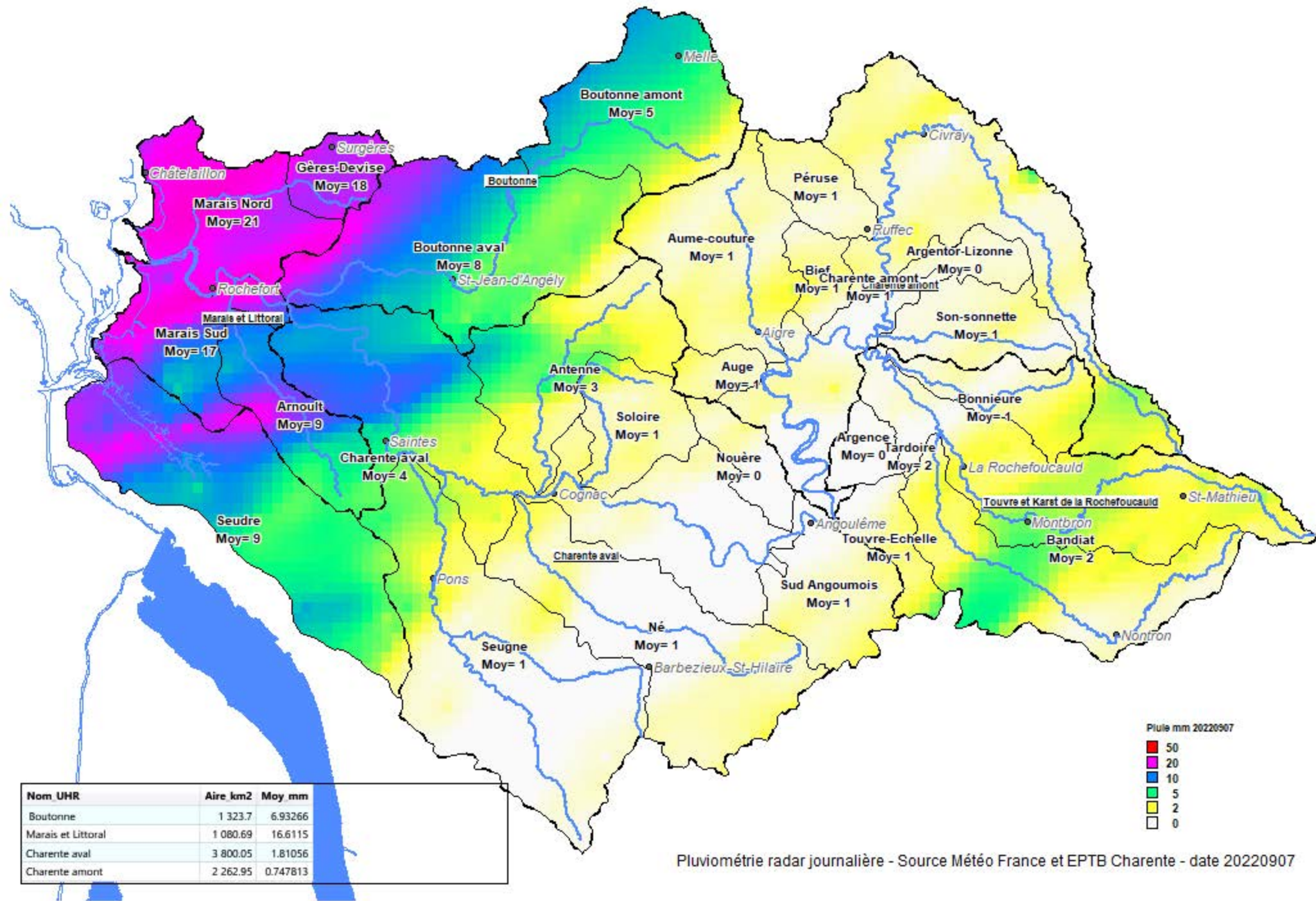
Pluviométrie radar journalière - Source Météo France et EPTB Charente - date 20220905

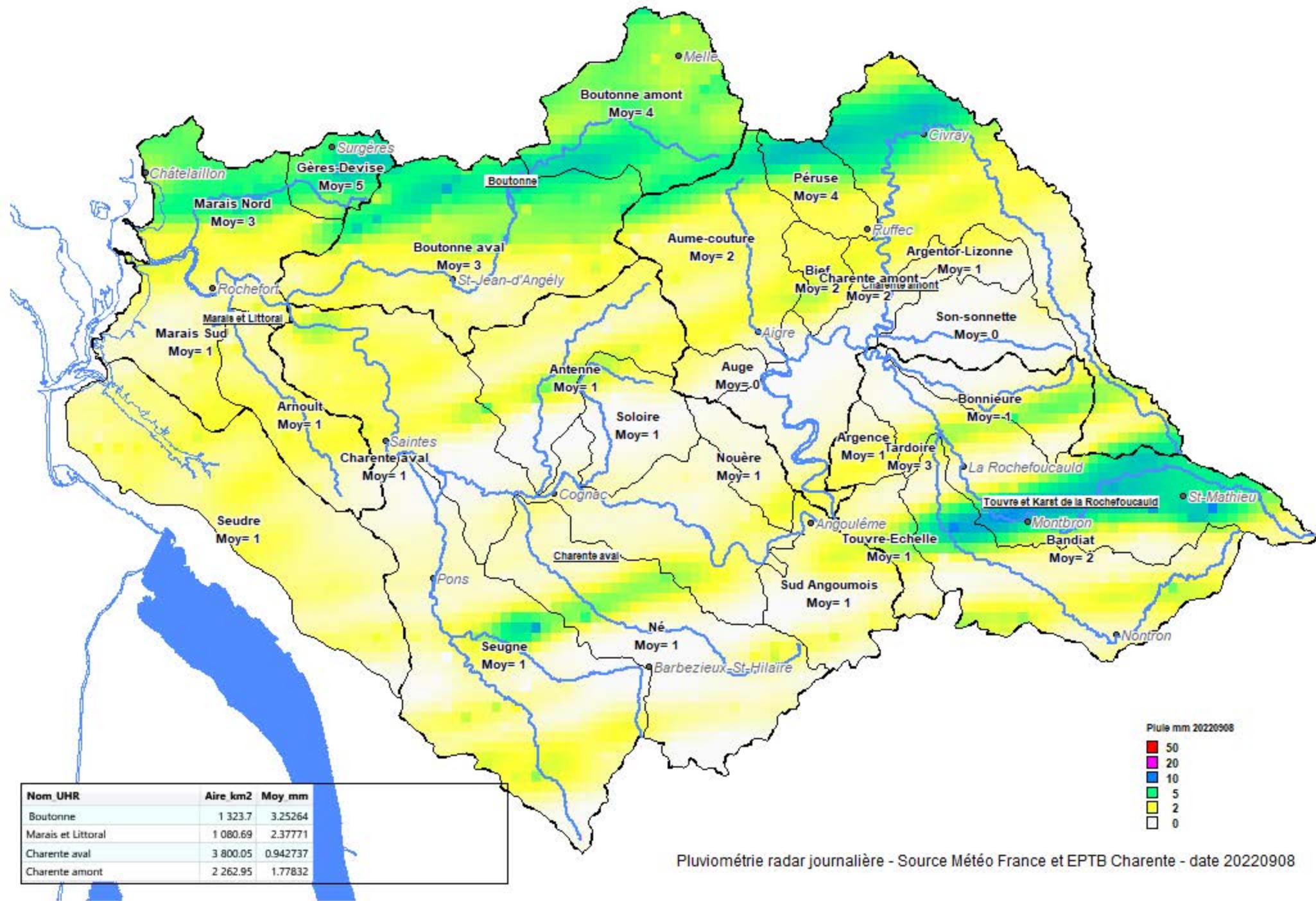


| Nom UHR | Aire km2 | Moy mm |
|--------------------|----------|-----------|
| Boutonne | 1 323.7 | 0 |
| Marais et Littoral | 1 080.69 | 0 |
| Charente aval | 3 800.05 | 0 |
| Charente amont | 2 262.95 | 0.0835299 |



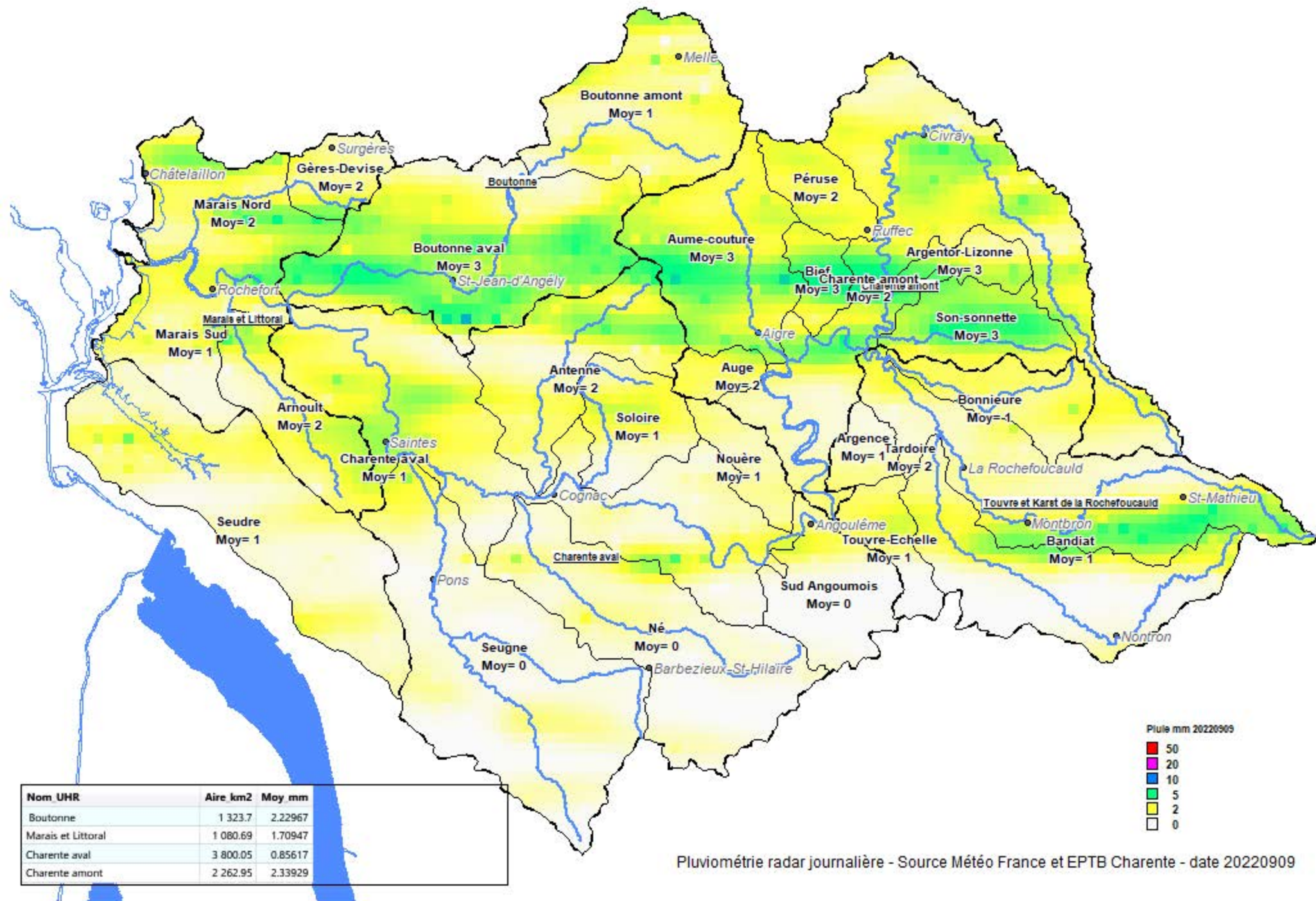
Pluviométrie radar journalière - Source Météo France et EPTB Charente - date 20220906

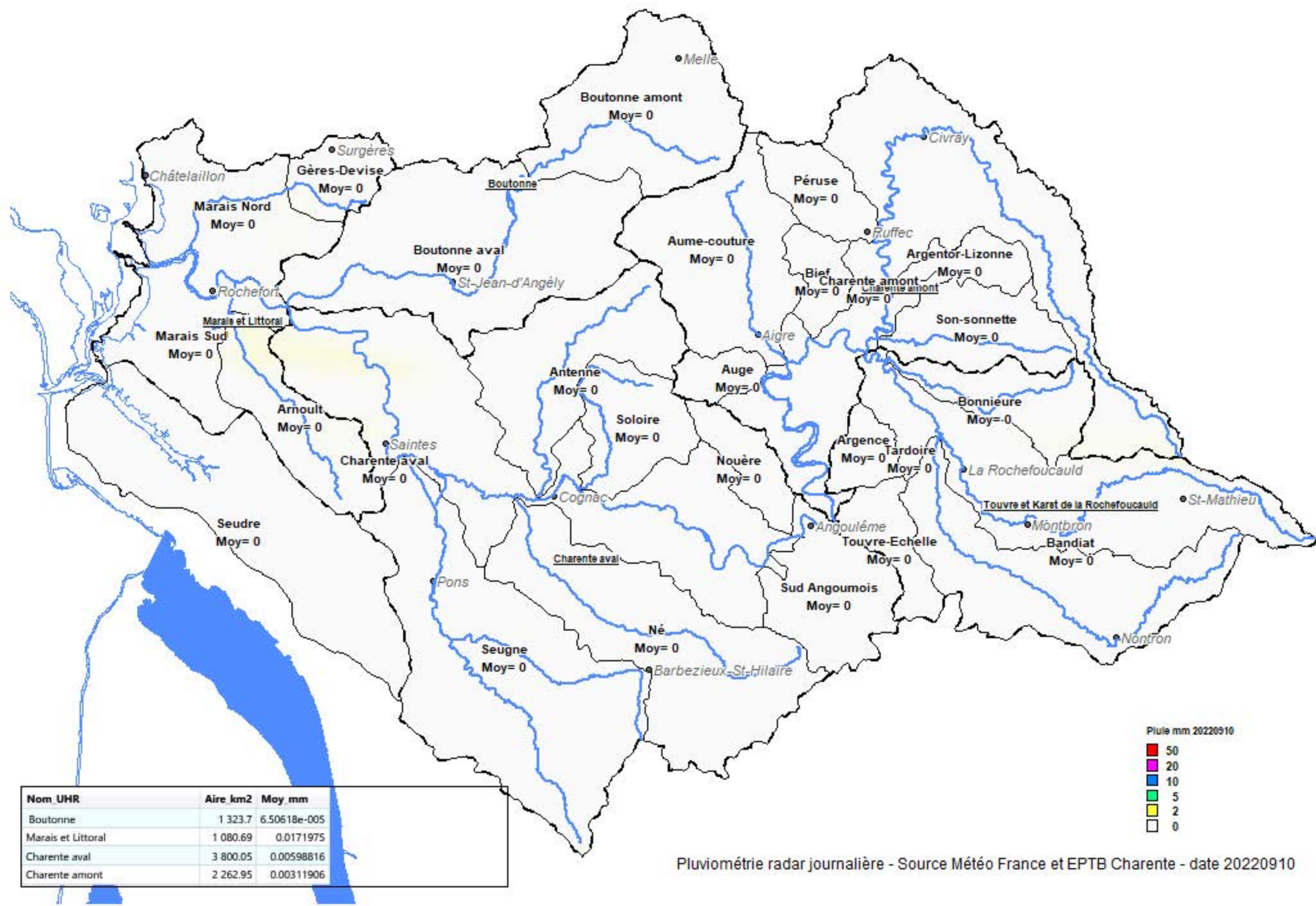




| Nom UHR | Aire km2 | Moy mm |
|--------------------|----------|----------|
| Boutonne | 1 323.7 | 3.25264 |
| Marais et Littoral | 1 080.69 | 2.37771 |
| Charente aval | 3 800.05 | 0.942737 |
| Charente amont | 2 262.95 | 1.77832 |

Pluimétrie radar journalière - Source Météo France et EPTB Charente - date 20220908

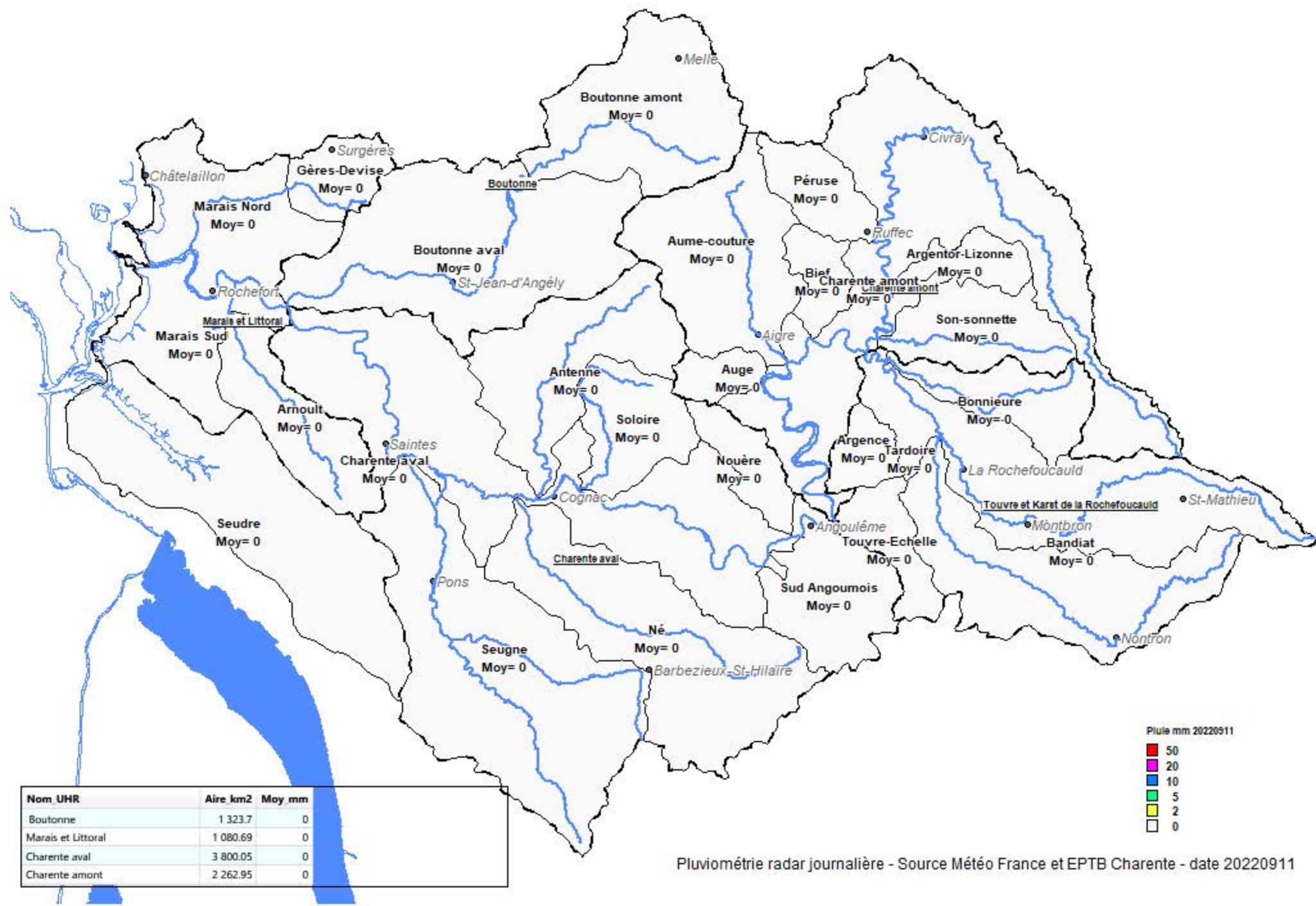




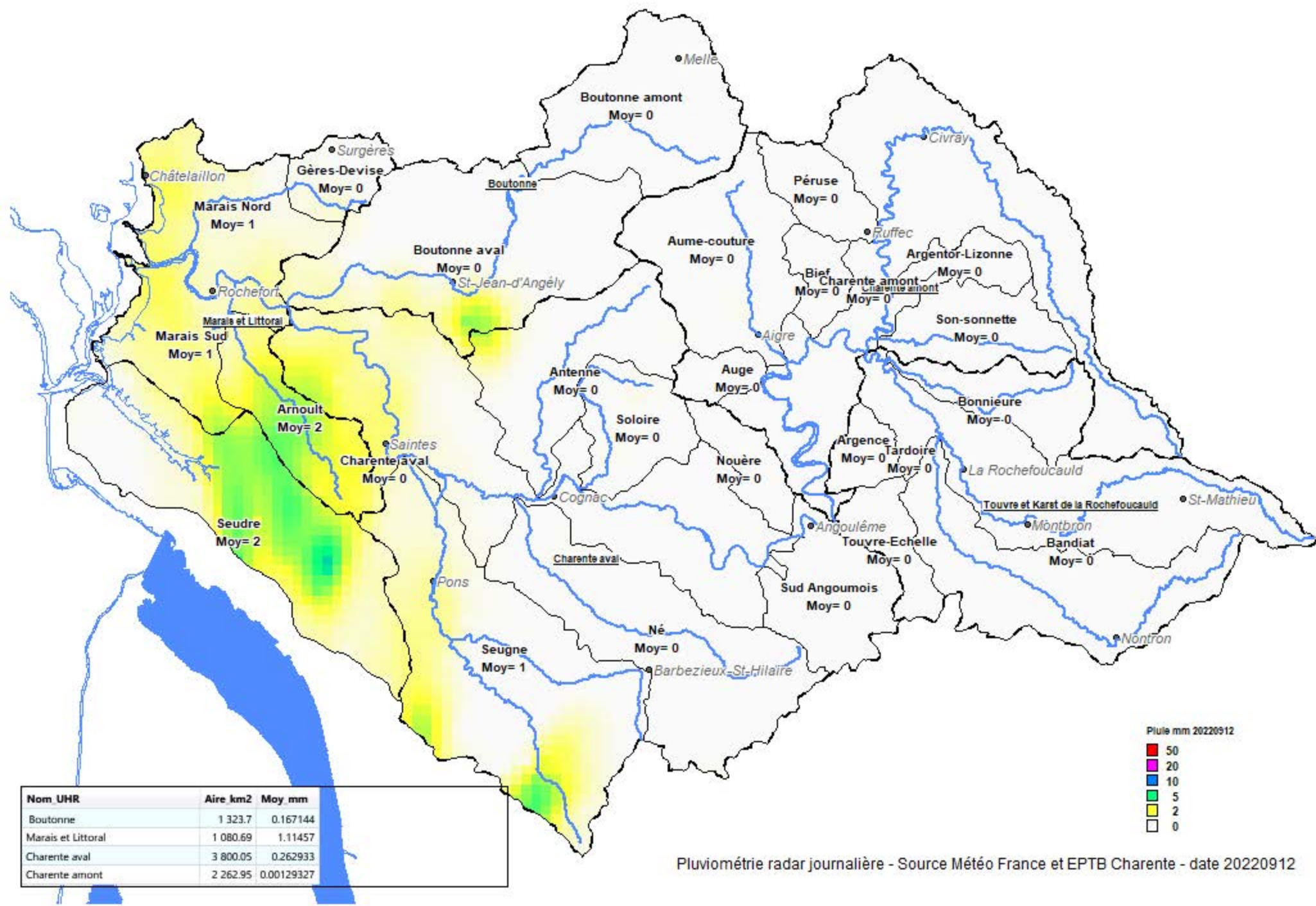
| Nom UHR | Aire km2 | Moy mm |
|--------------------|----------|--------------|
| Boutonne | 1 323.7 | 6.50618e-005 |
| Marais et Littoral | 1 080.69 | 0.0171975 |
| Charente aval | 3 800.05 | 0.00598816 |
| Charente amont | 2 262.95 | 0.00311906 |

Pluie mm 20220910

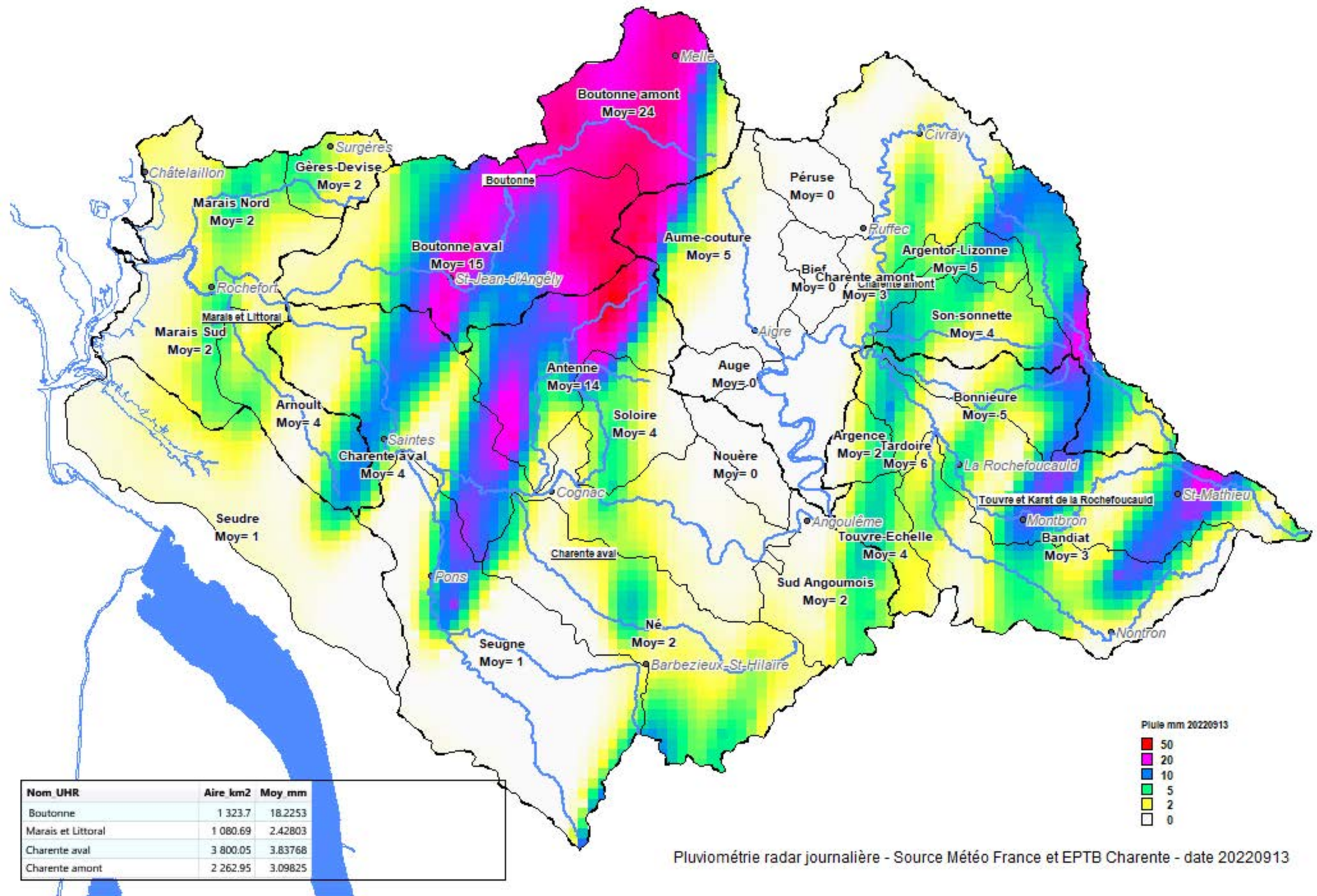
- 50
- 20
- 10
- 5
- 2
- 0



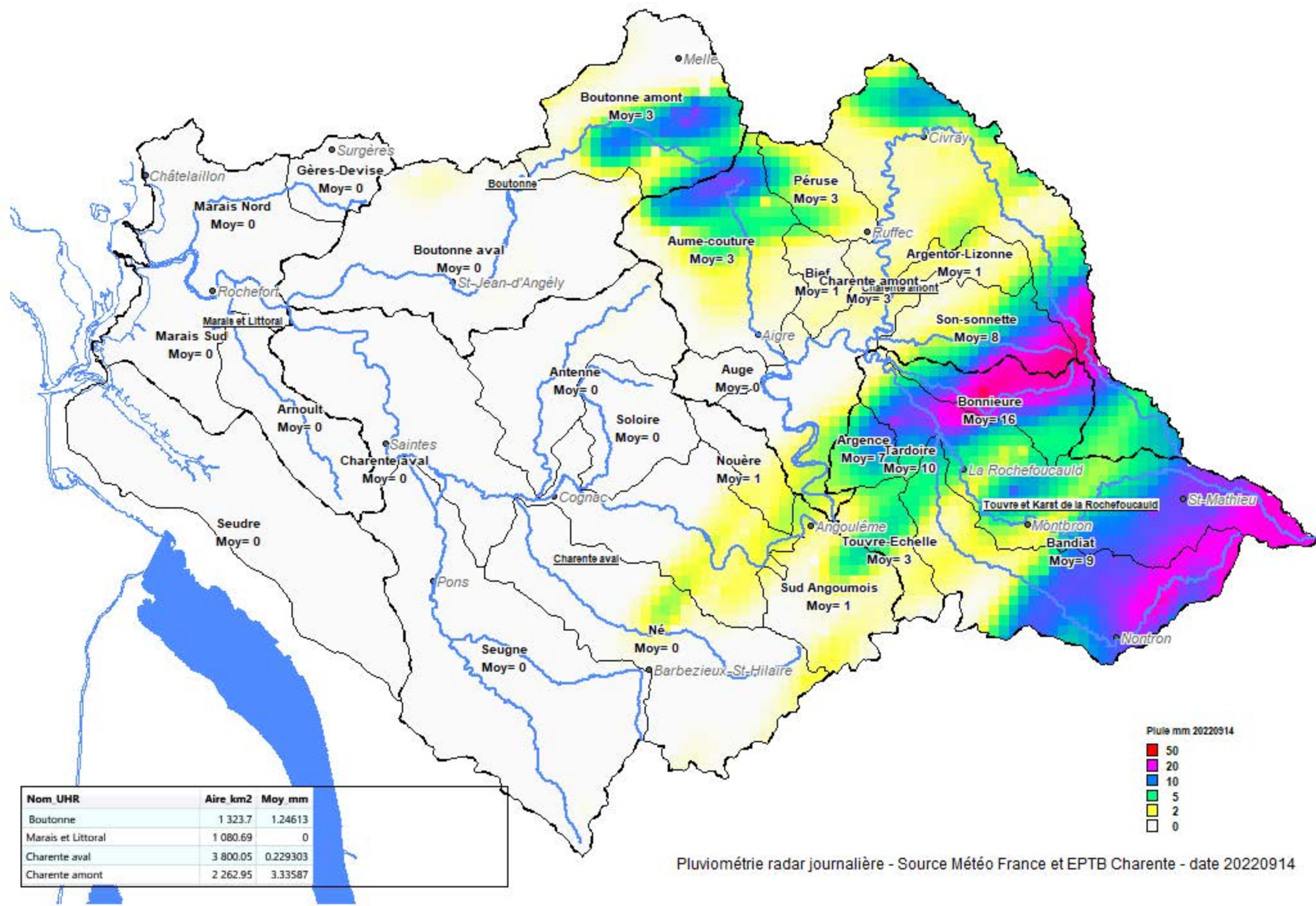
Pluviométrie radar journalière - Source Météo France et EPTB Charente - date 20220911



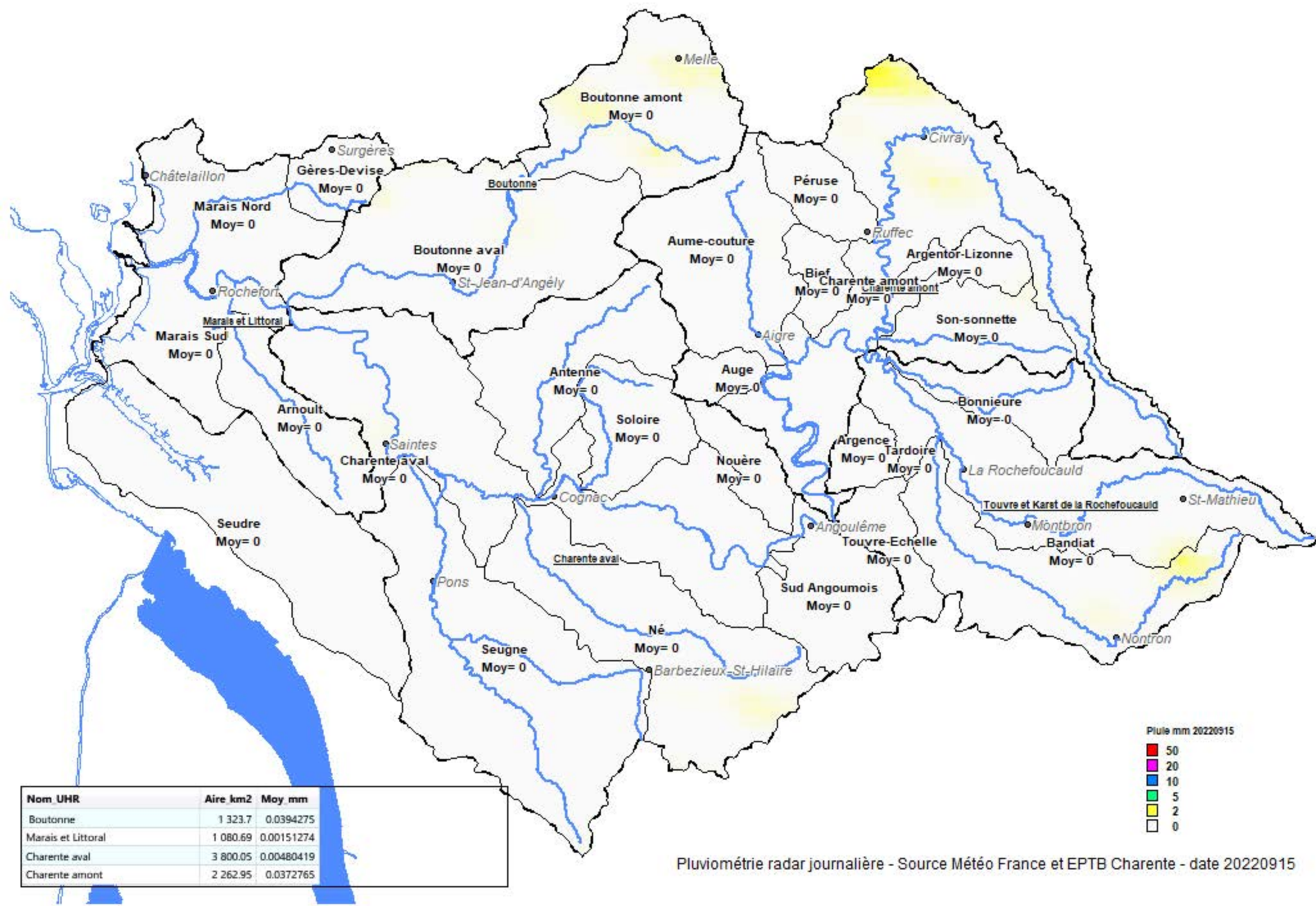
Pluviométrie radar journalière - Source Météo France et EPTB Charente - date 20220912



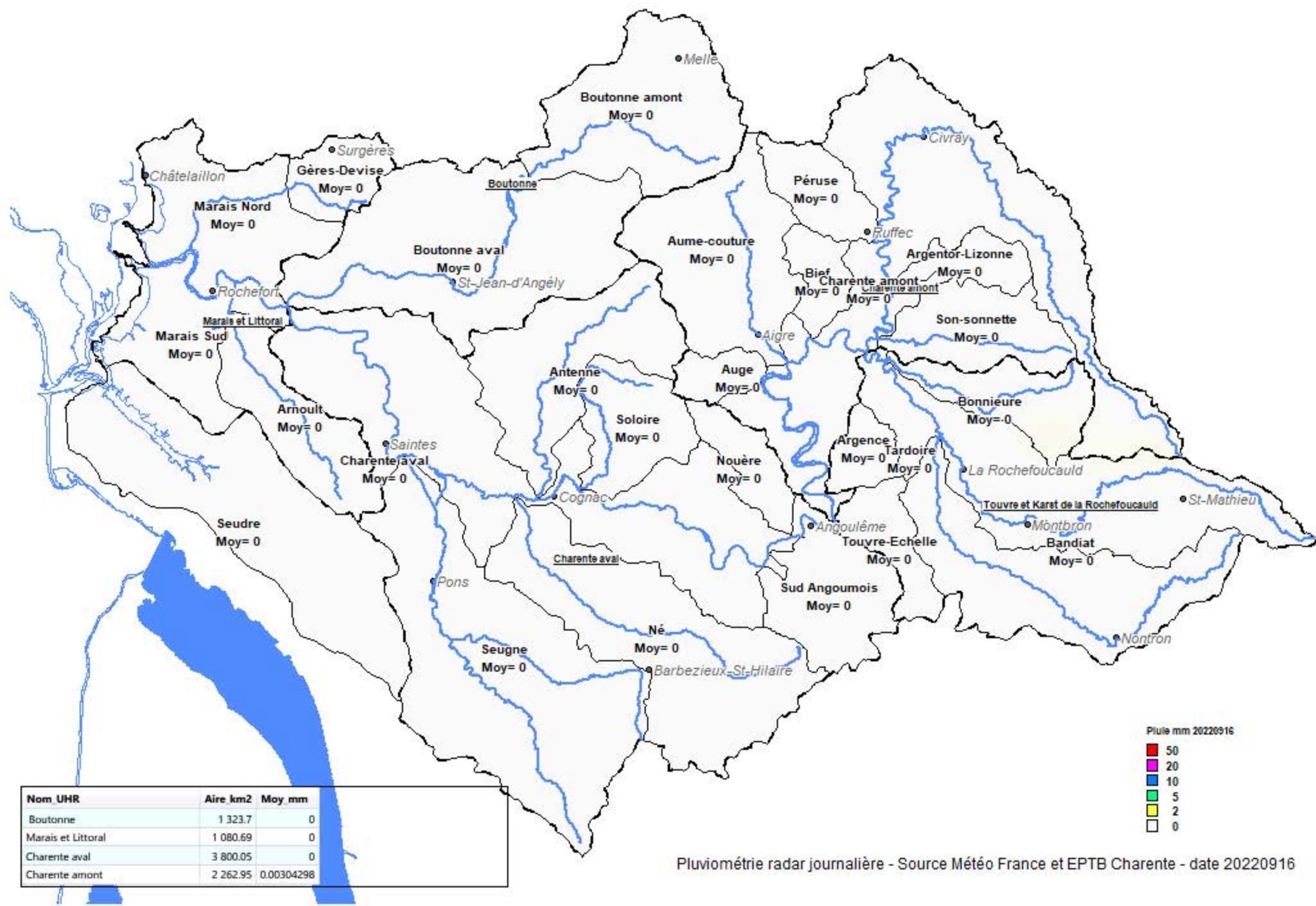
Pluimétrie radar journalière - Source Météo France et EPTB Charente - date 20220913



Pluimétrie radar journalière - Source Météo France et EPTB Charente - date 20220914



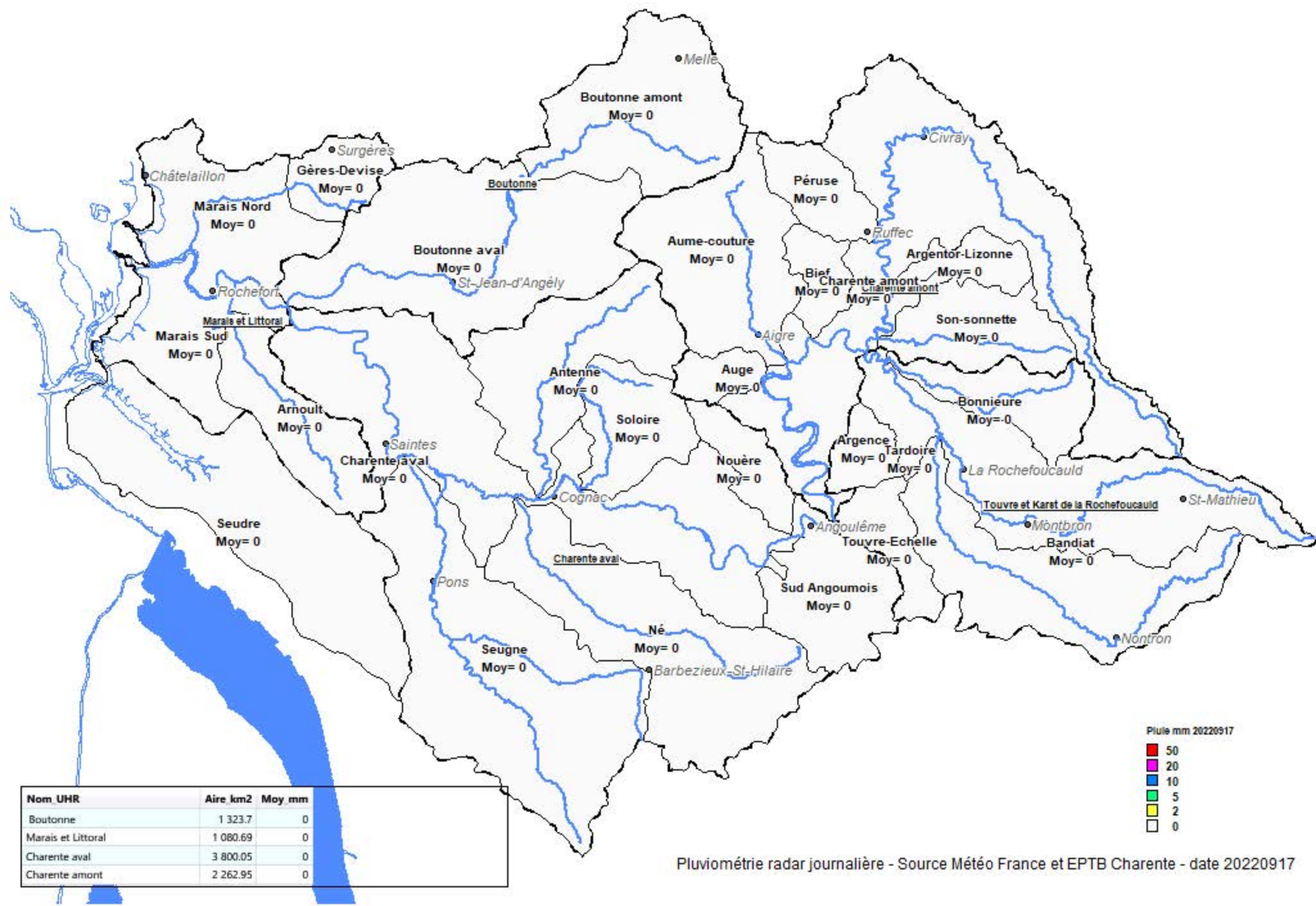
Pluviométrie radar journalière - Source Météo France et EPTB Charente - date 20220915



| Nom UHR | Aire km2 | Moy mm |
|--------------------|----------|------------|
| Boutonne | 1 323.7 | 0 |
| Marais et Littoral | 1 080.69 | 0 |
| Charente aval | 3 800.05 | 0 |
| Charente amont | 2 262.95 | 0.00304298 |



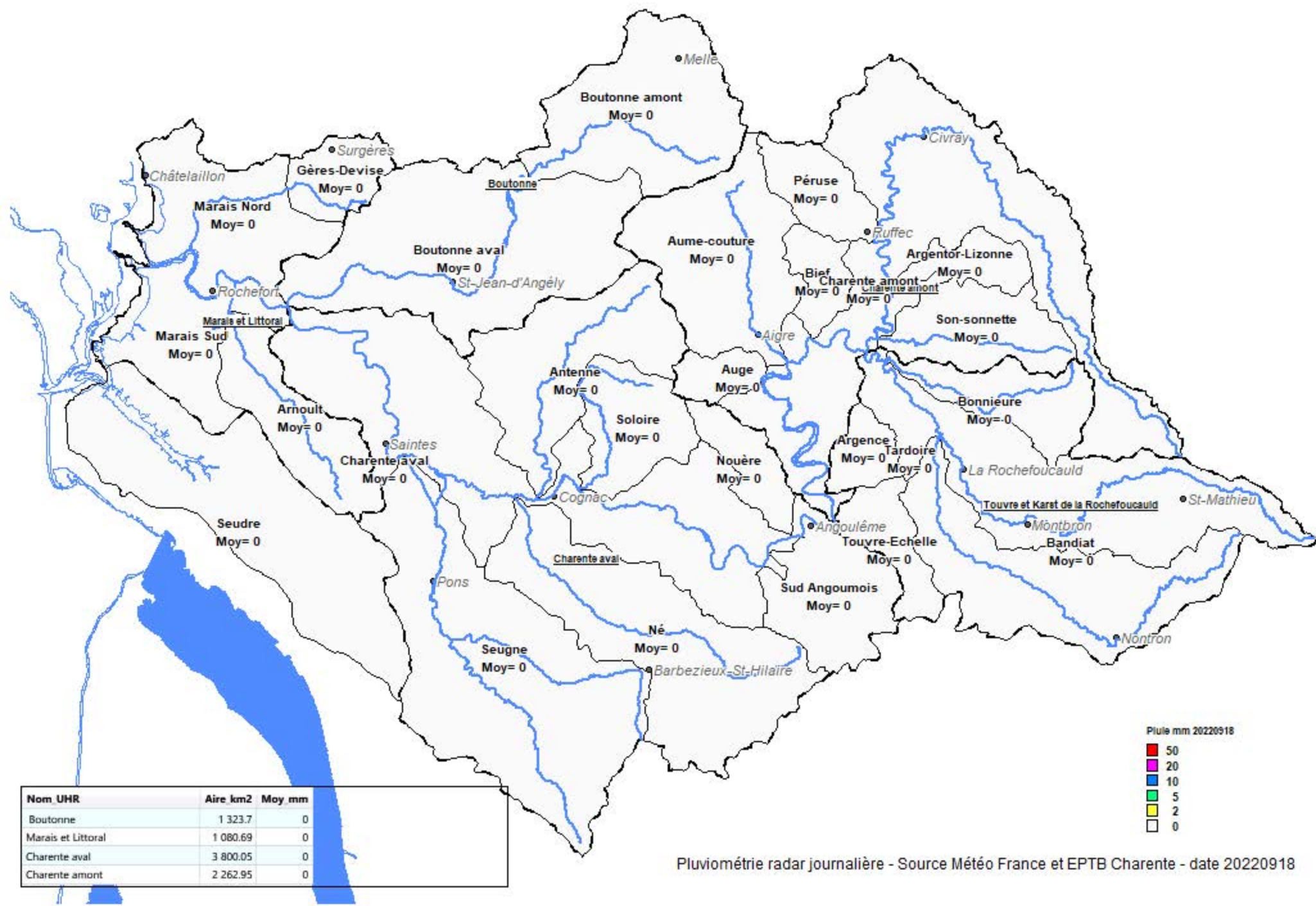
Pluviométrie radar journalière - Source Météo France et EPTB Charente - date 20220916



| Nom UHR | Aire km2 | Moy mm |
|--------------------|----------|--------|
| Boutonne | 1 323.7 | 0 |
| Marais et Littoral | 1 080.69 | 0 |
| Charente aval | 3 800.05 | 0 |
| Charente amont | 2 262.95 | 0 |



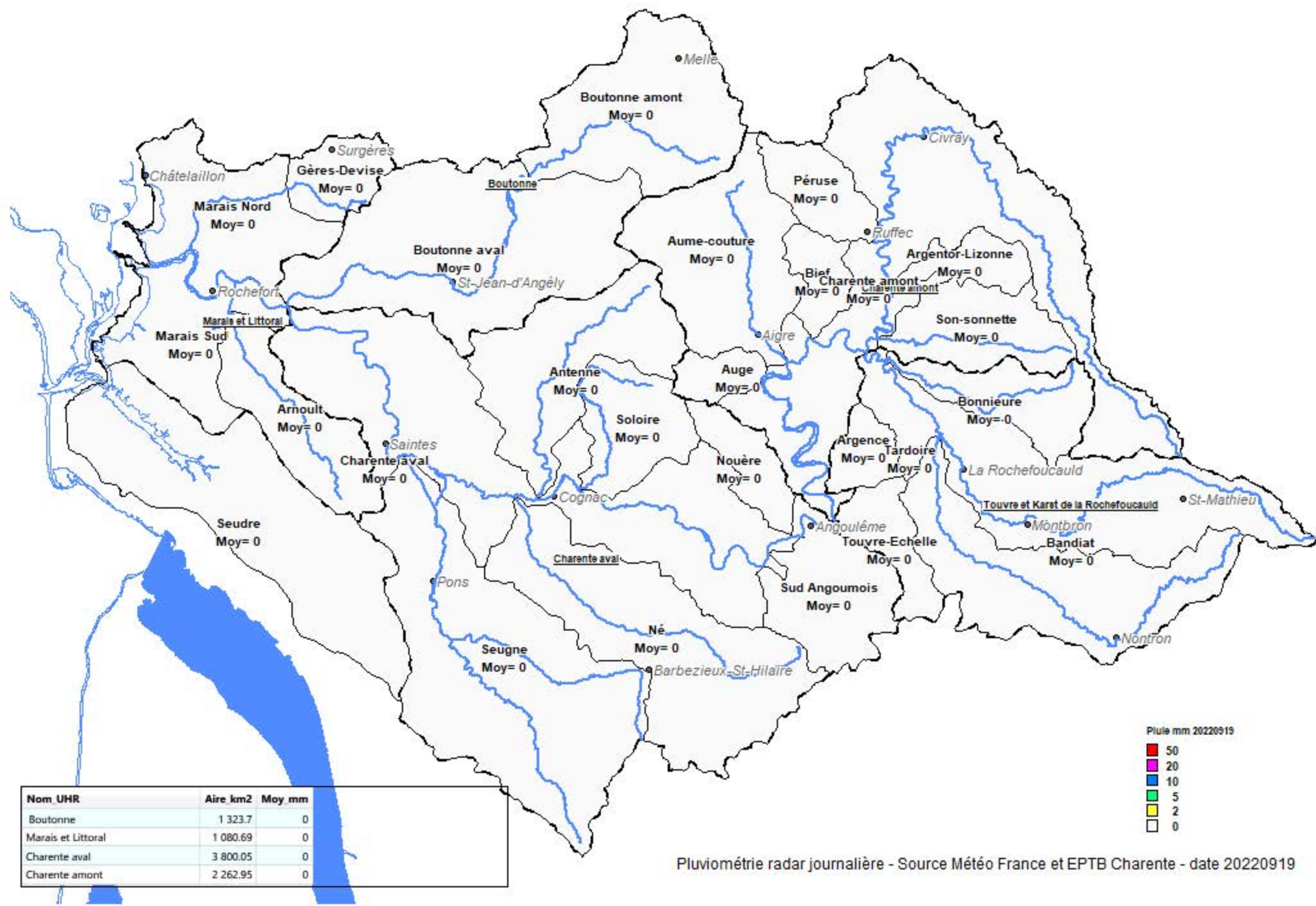
Pluviométrie radar journalière - Source Météo France et EPTB Charente - date 20220917



| Nom UHR | Aire km2 | Moy mm |
|--------------------|----------|--------|
| Boutonne | 1 323.7 | 0 |
| Marais et Littoral | 1 080.69 | 0 |
| Charente aval | 3 800.05 | 0 |
| Charente amont | 2 262.95 | 0 |



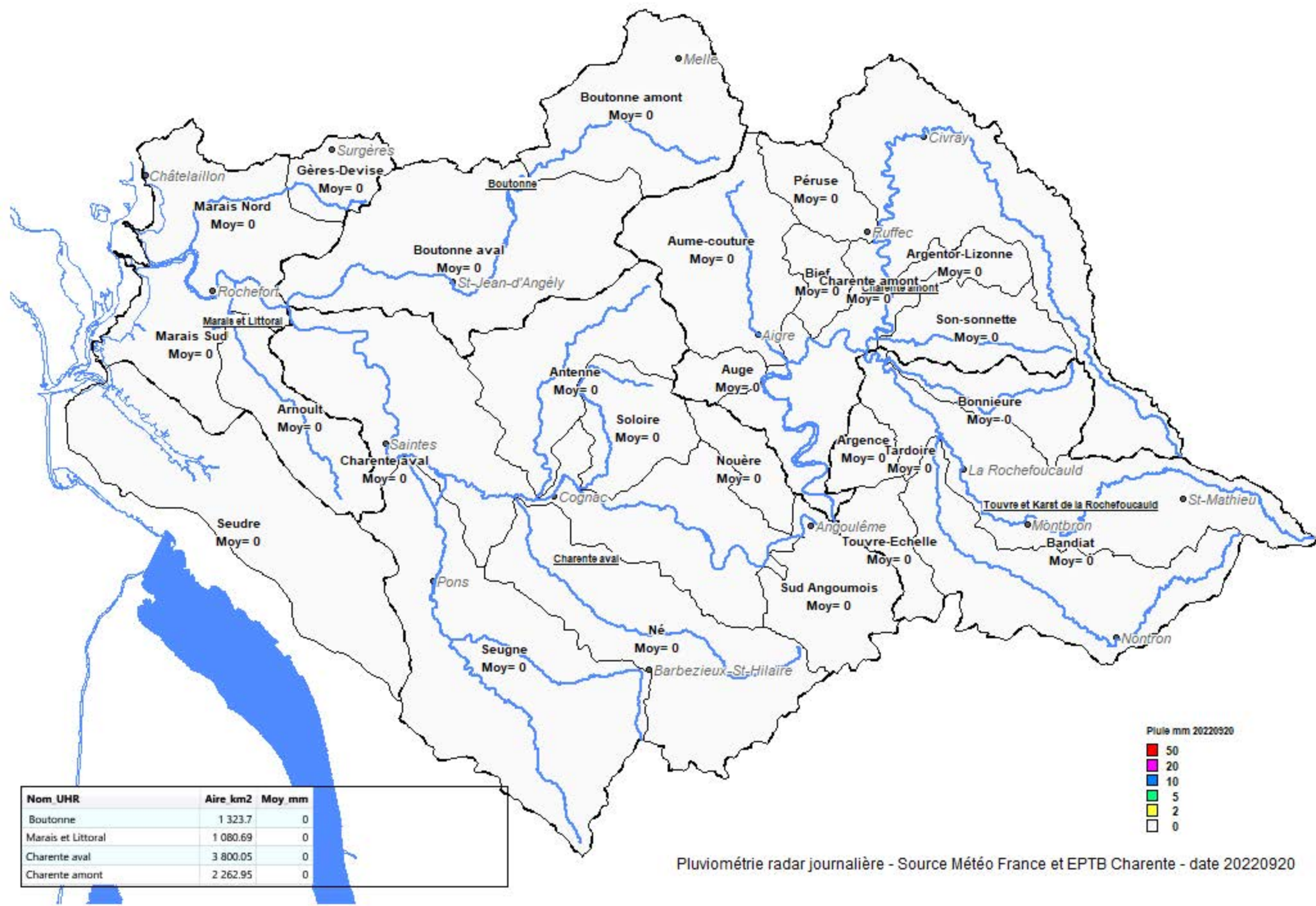
Pluviométrie radar journalière - Source Météo France et EPTB Charente - date 20220918



| Nom UHR | Aire km2 | Moy mm |
|--------------------|----------|--------|
| Boutonne | 1 323.7 | 0 |
| Marais et Littoral | 1 080.69 | 0 |
| Charente aval | 3 800.05 | 0 |
| Charente amont | 2 262.95 | 0 |



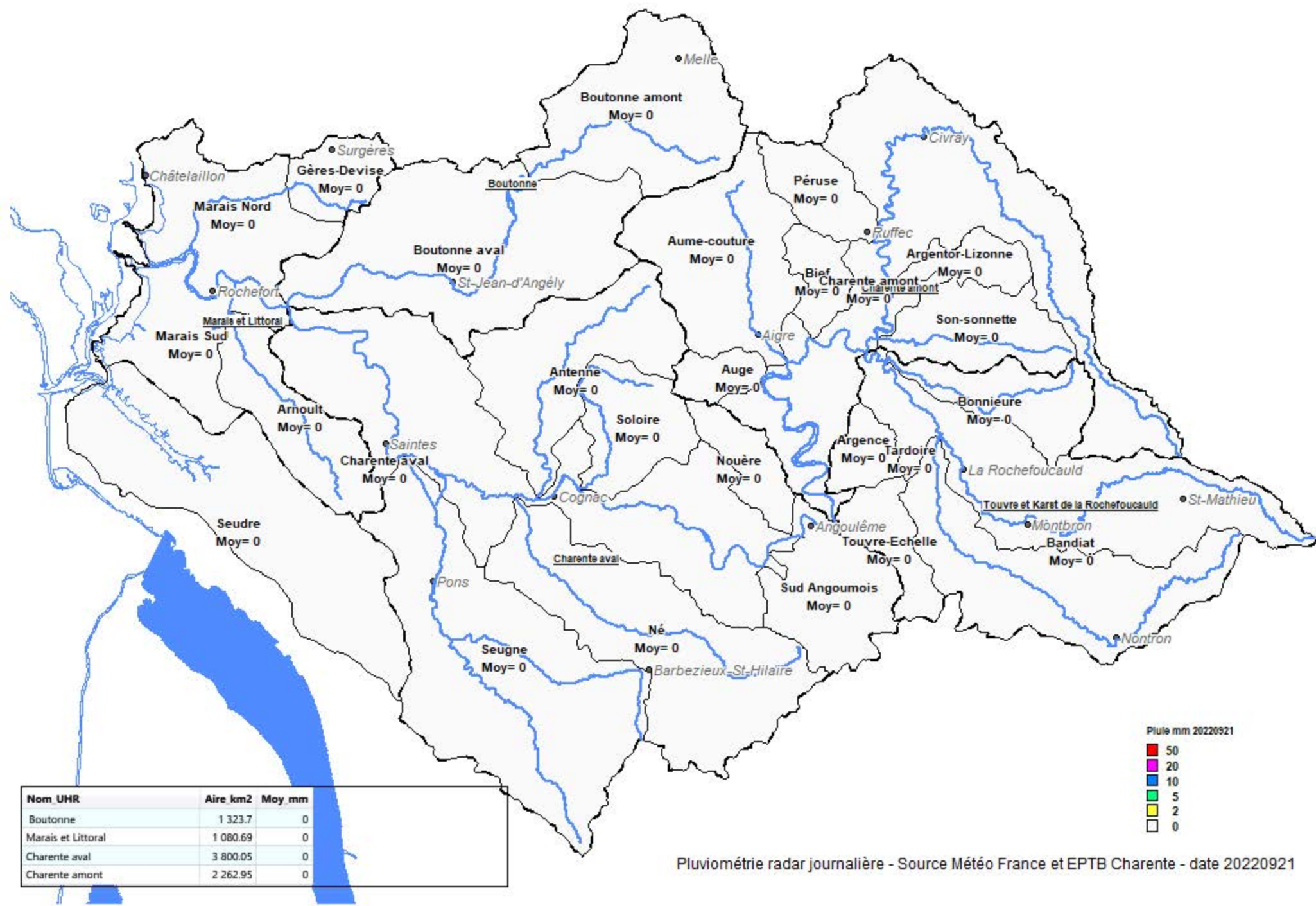
Pluviométrie radar journalière - Source Météo France et EPTB Charente - date 20220919



| Nom UHR | Aire km2 | Moy mm |
|--------------------|----------|--------|
| Boutonne | 1 323.7 | 0 |
| Marais et Littoral | 1 080.69 | 0 |
| Charente aval | 3 800.05 | 0 |
| Charente amont | 2 262.95 | 0 |



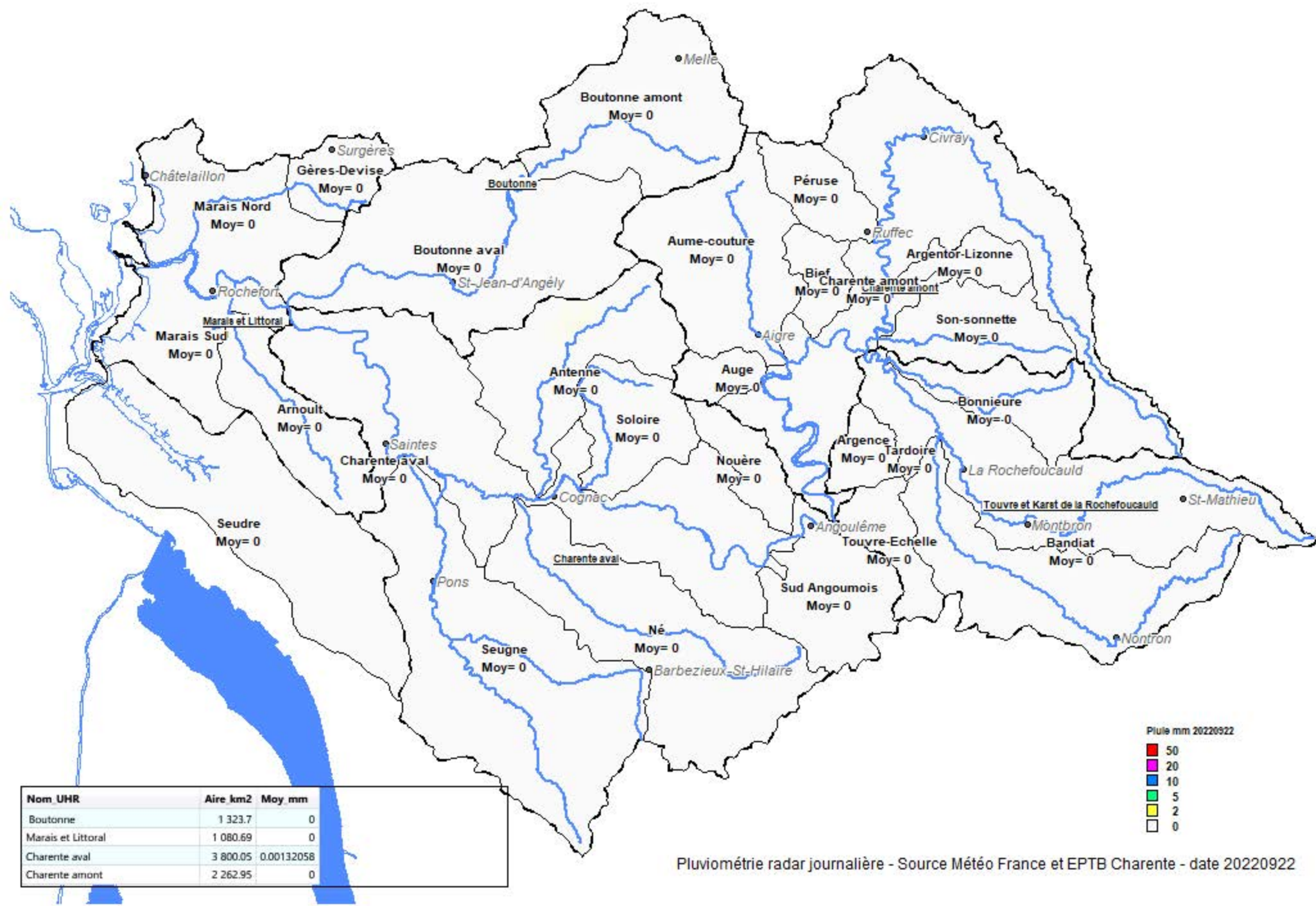
Pluviométrie radar journalière - Source Météo France et EPTB Charente - date 20220920



| Nom UHR | Aire km2 | Moy mm |
|--------------------|----------|--------|
| Boutonne | 1 323.7 | 0 |
| Marais et Littoral | 1 080.69 | 0 |
| Charente aval | 3 800.05 | 0 |
| Charente amont | 2 262.95 | 0 |

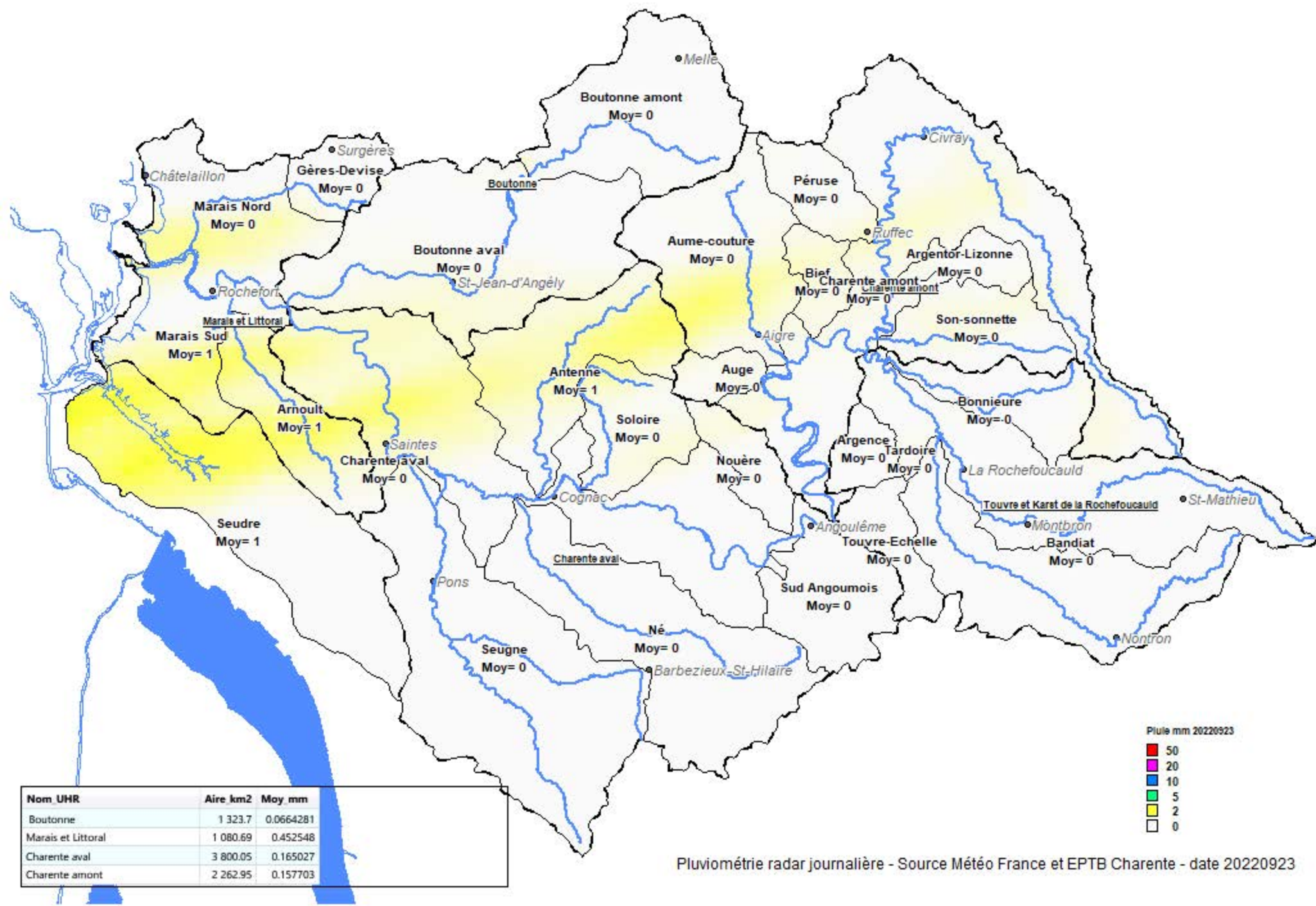


Pluviométrie radar journalière - Source Météo France et EPTB Charente - date 20220921



| Nom UHR | Aire km2 | Moy mm |
|--------------------|----------|------------|
| Boutonne | 1 323.7 | 0 |
| Marais et Littoral | 1 080.69 | 0 |
| Charente aval | 3 800.05 | 0.00132058 |
| Charente amont | 2 262.95 | 0 |

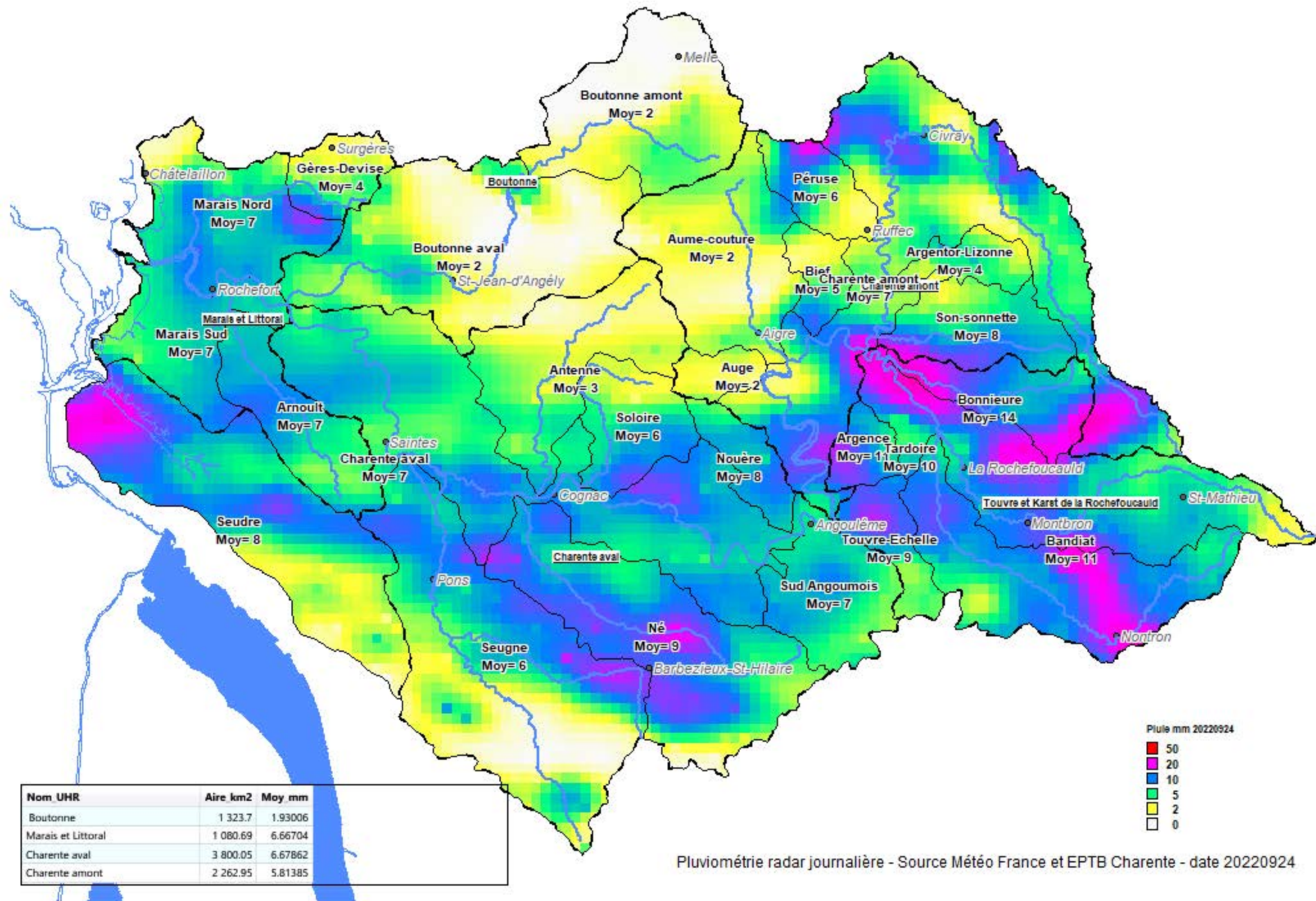
- Pluie mm 20220922
- 50
 - 20
 - 10
 - 5
 - 2
 - 0

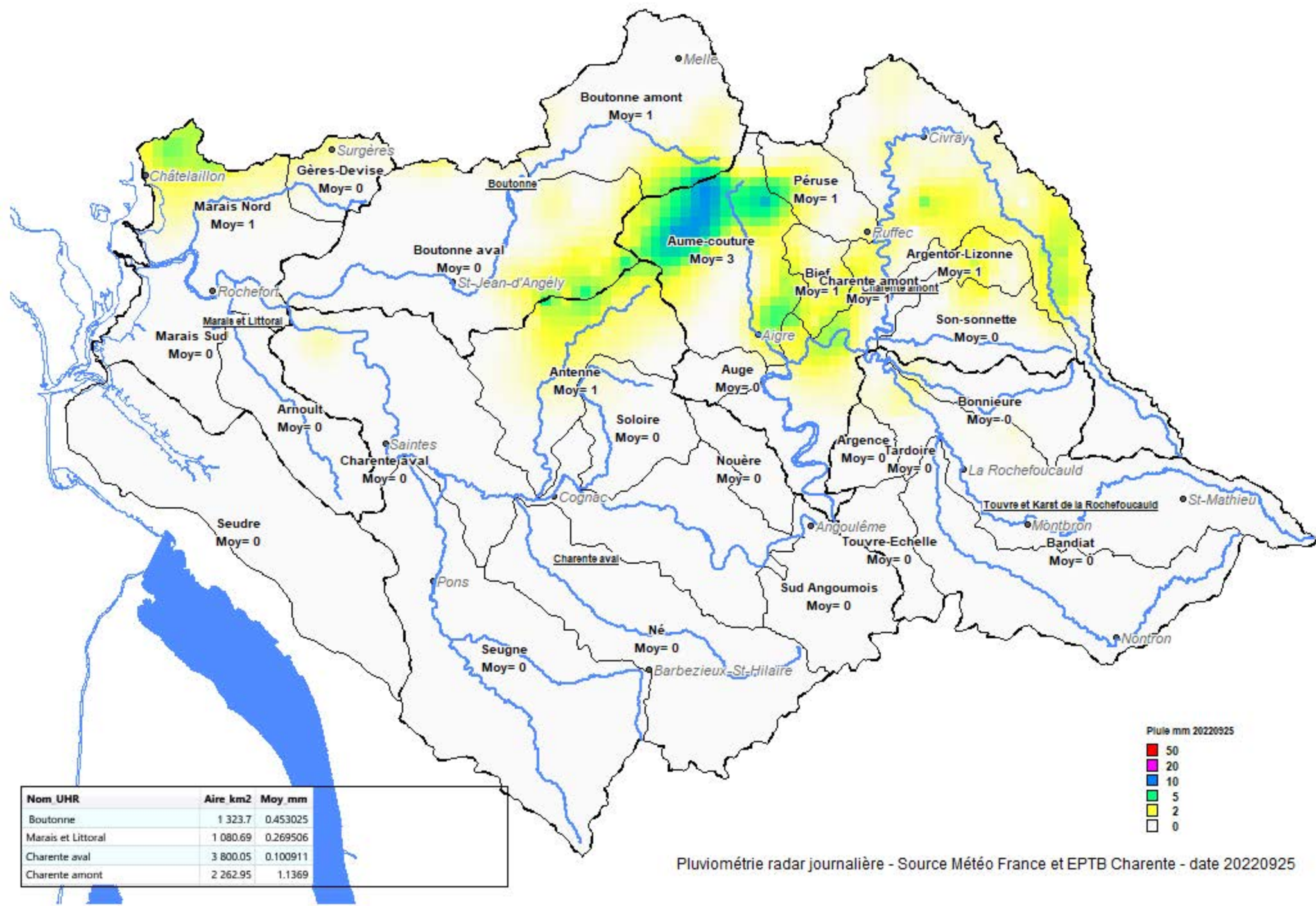


| Nom UHR | Aire km2 | Moy mm |
|--------------------|----------|-----------|
| Boutonne | 1 323.7 | 0.0664281 |
| Marais et Littoral | 1 080.69 | 0.452548 |
| Charente aval | 3 800.05 | 0.165027 |
| Charente amont | 2 262.95 | 0.157703 |

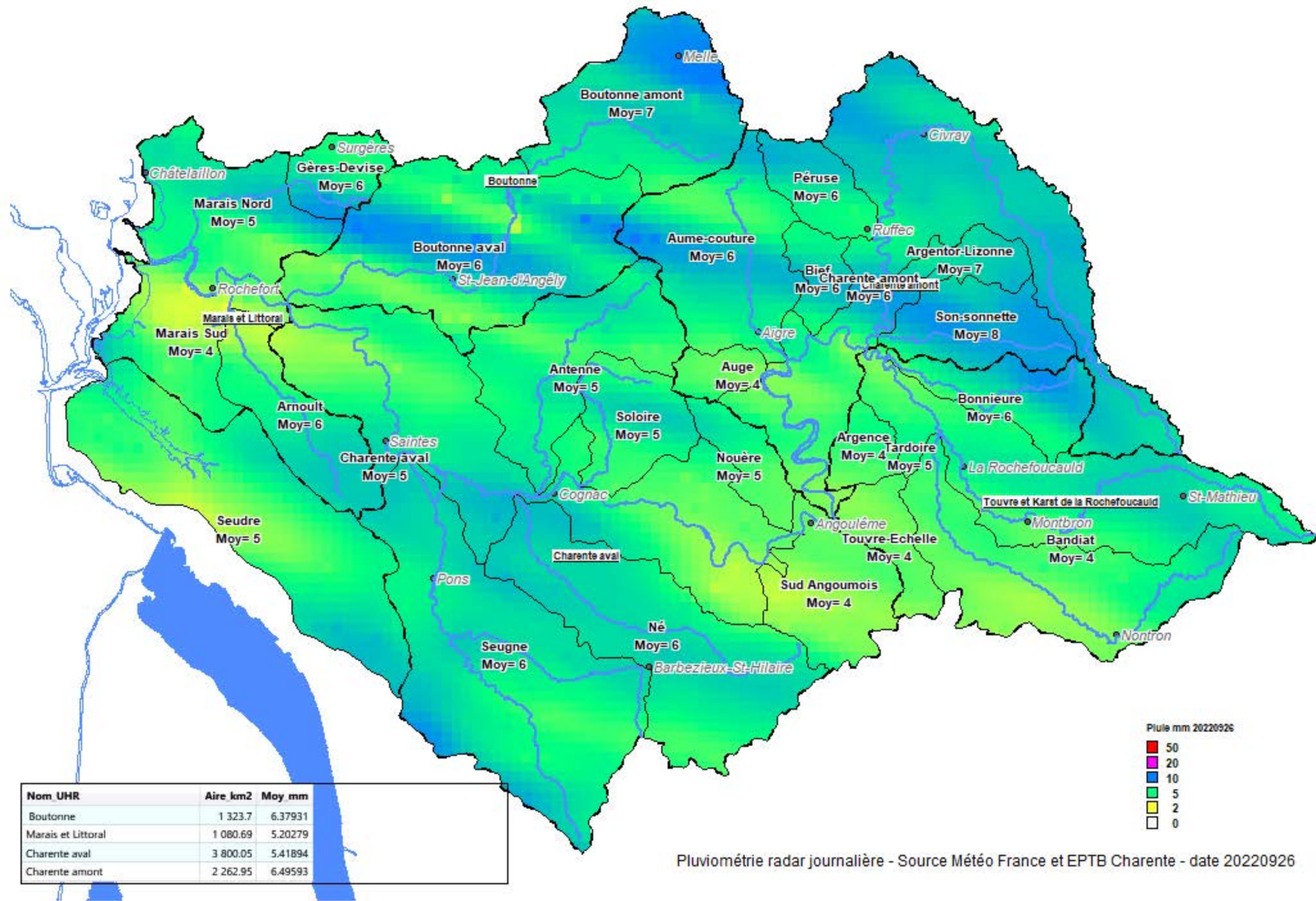


Pluviométrie radar journalière - Source Météo France et EPTB Charente - date 20220923





Pluviométrie radar journalière - Source Météo France et EPTB Charente - date 20220925



Pluviométrie radar journalière - Source Météo France et EPTB Charente - date 20220926

