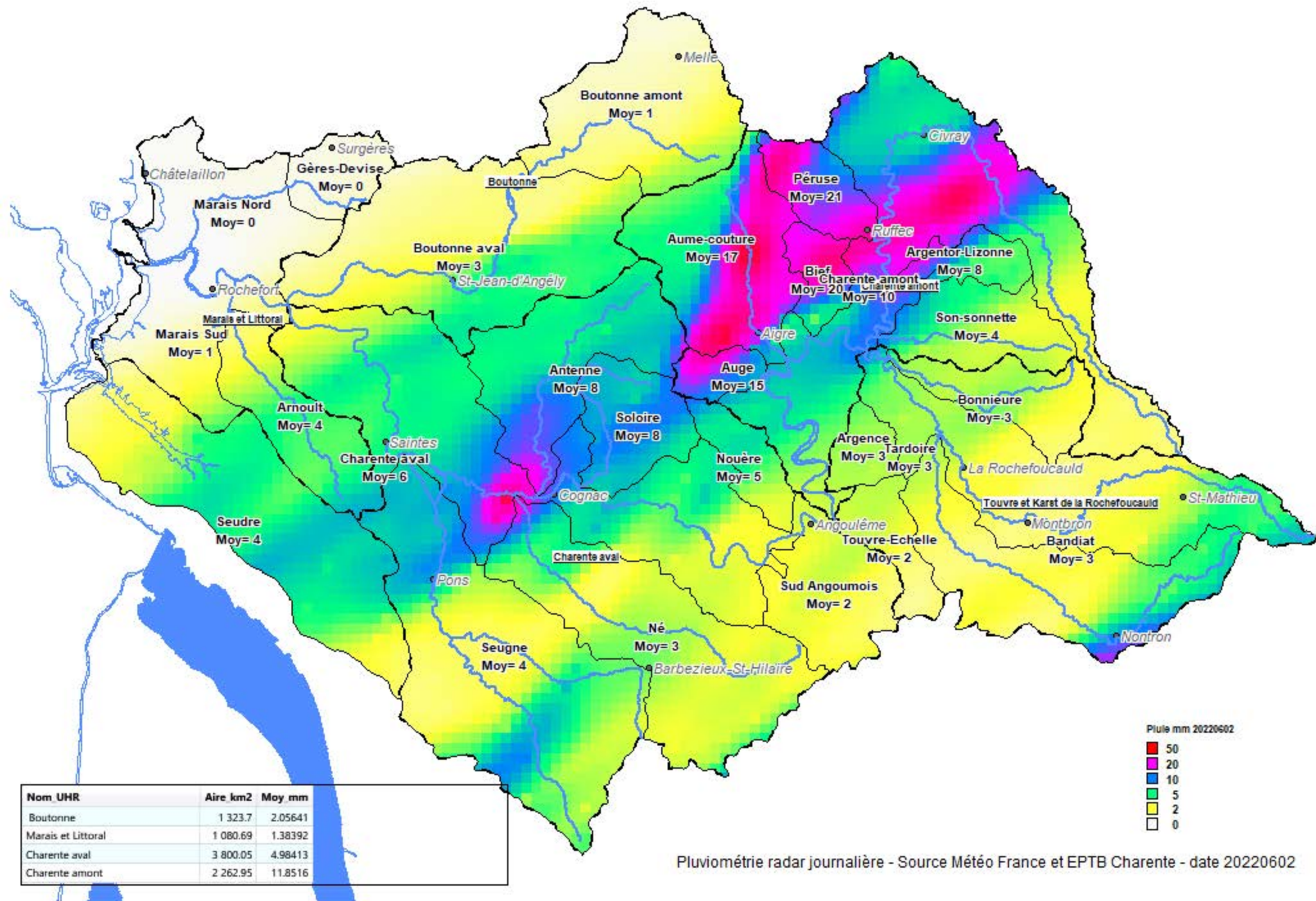
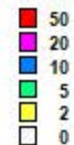


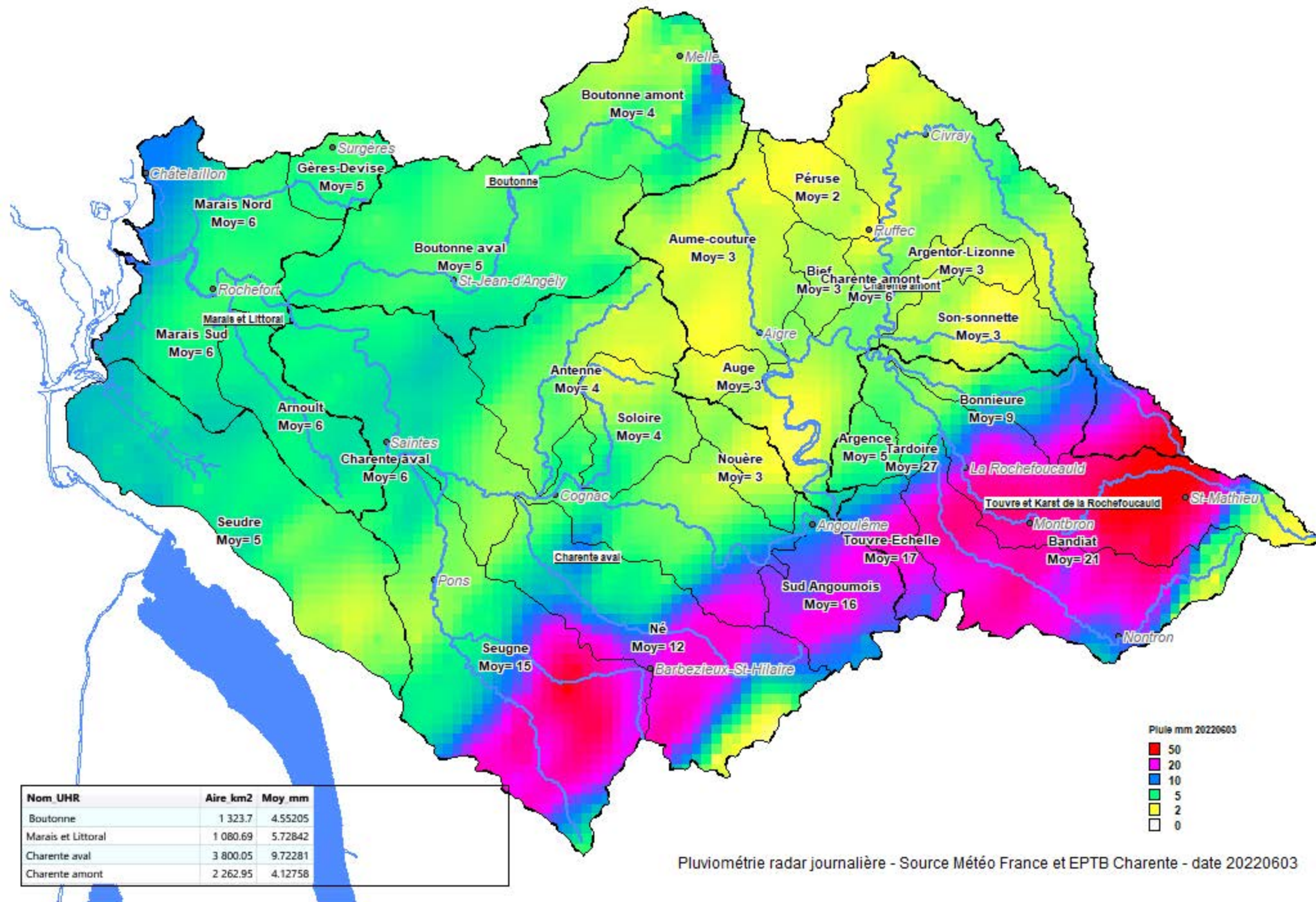
Pluviométrie radar journalière - Source Météo France et EPTB Charente - date 20220601

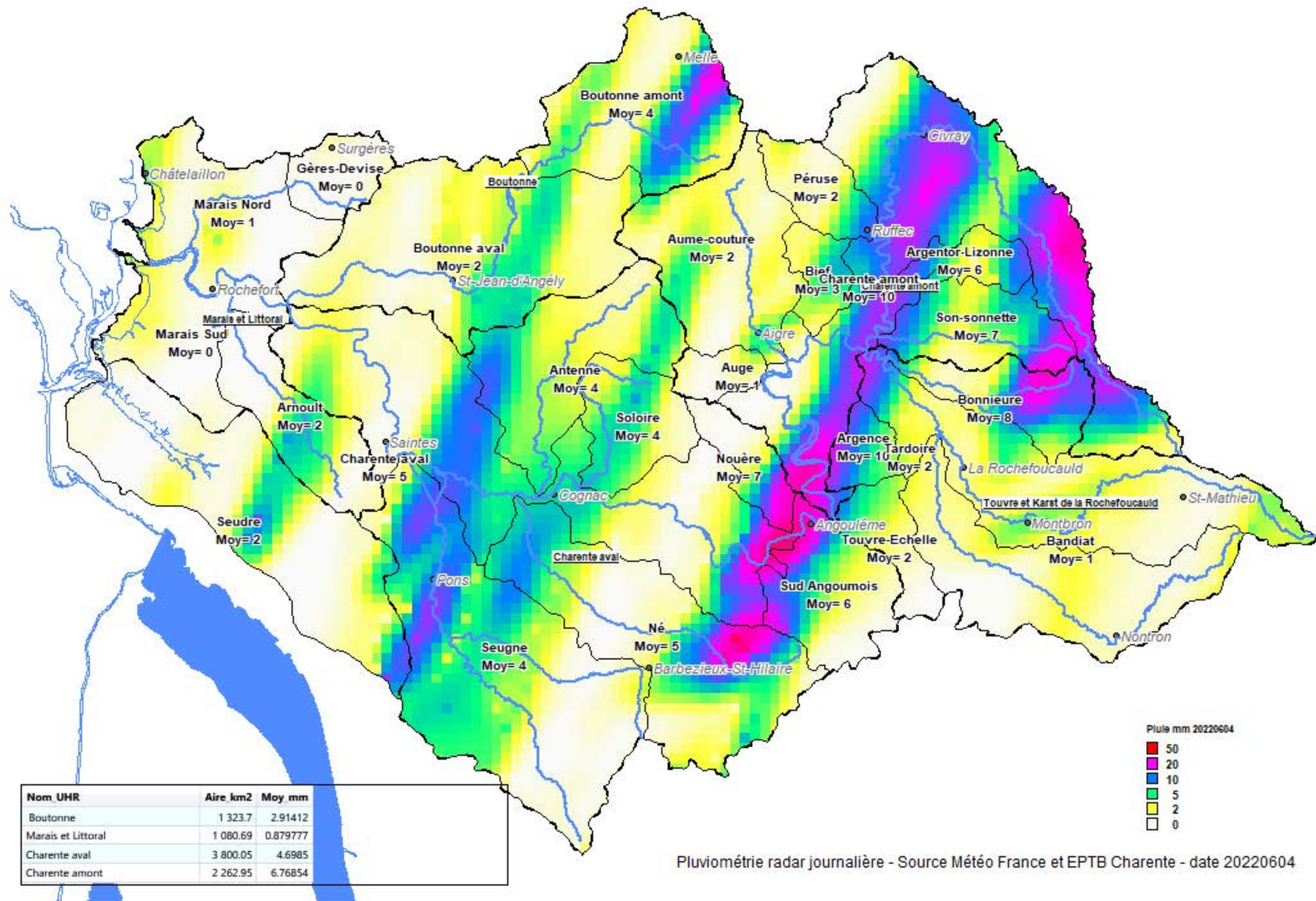


Pluie mm 20220602

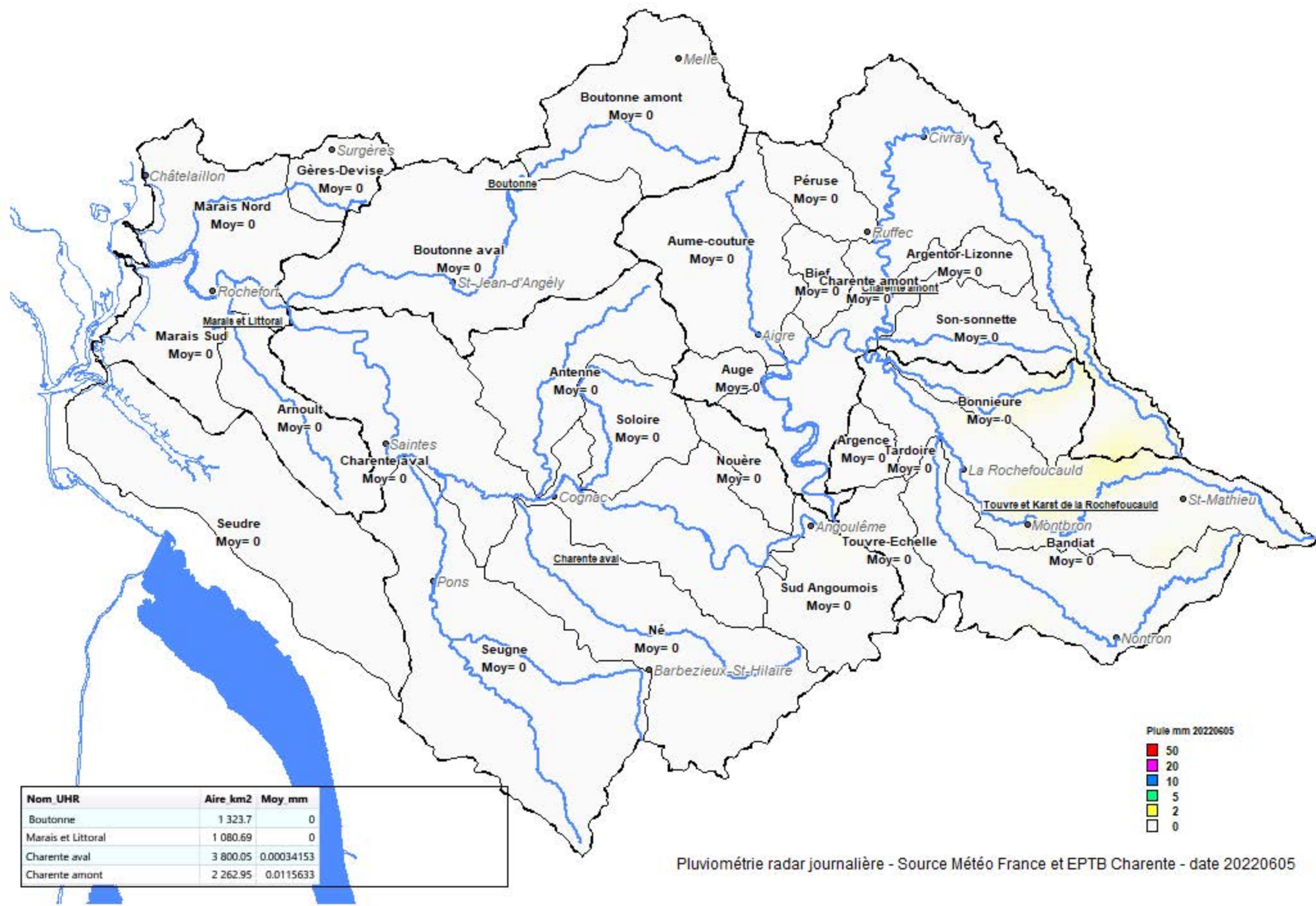


Pluimétrie radar journalière - Source Météo France et EPTB Charente - date 20220602





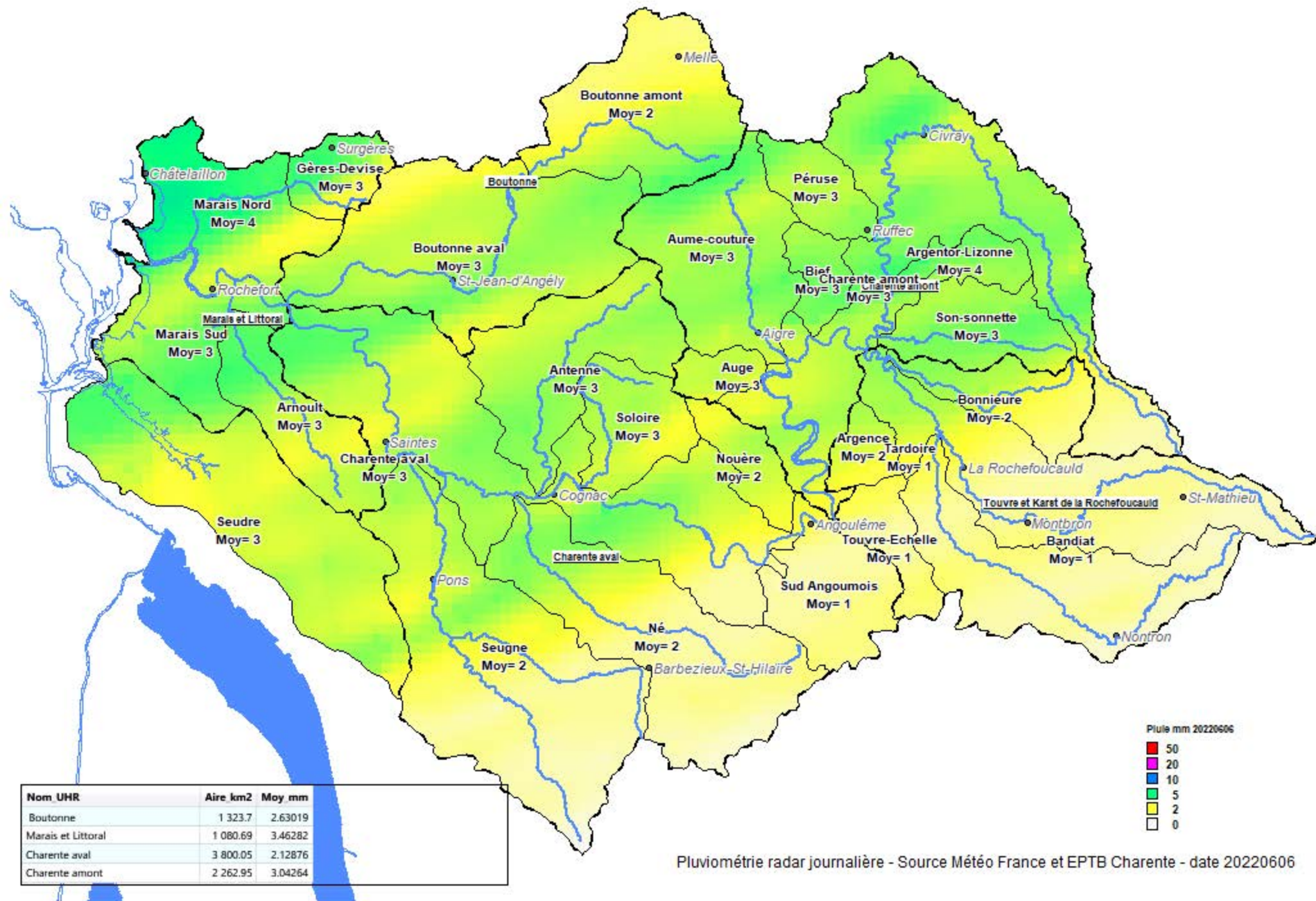
Pluviométrie radar journalière - Source Météo France et EPTB Charente - date 20220604



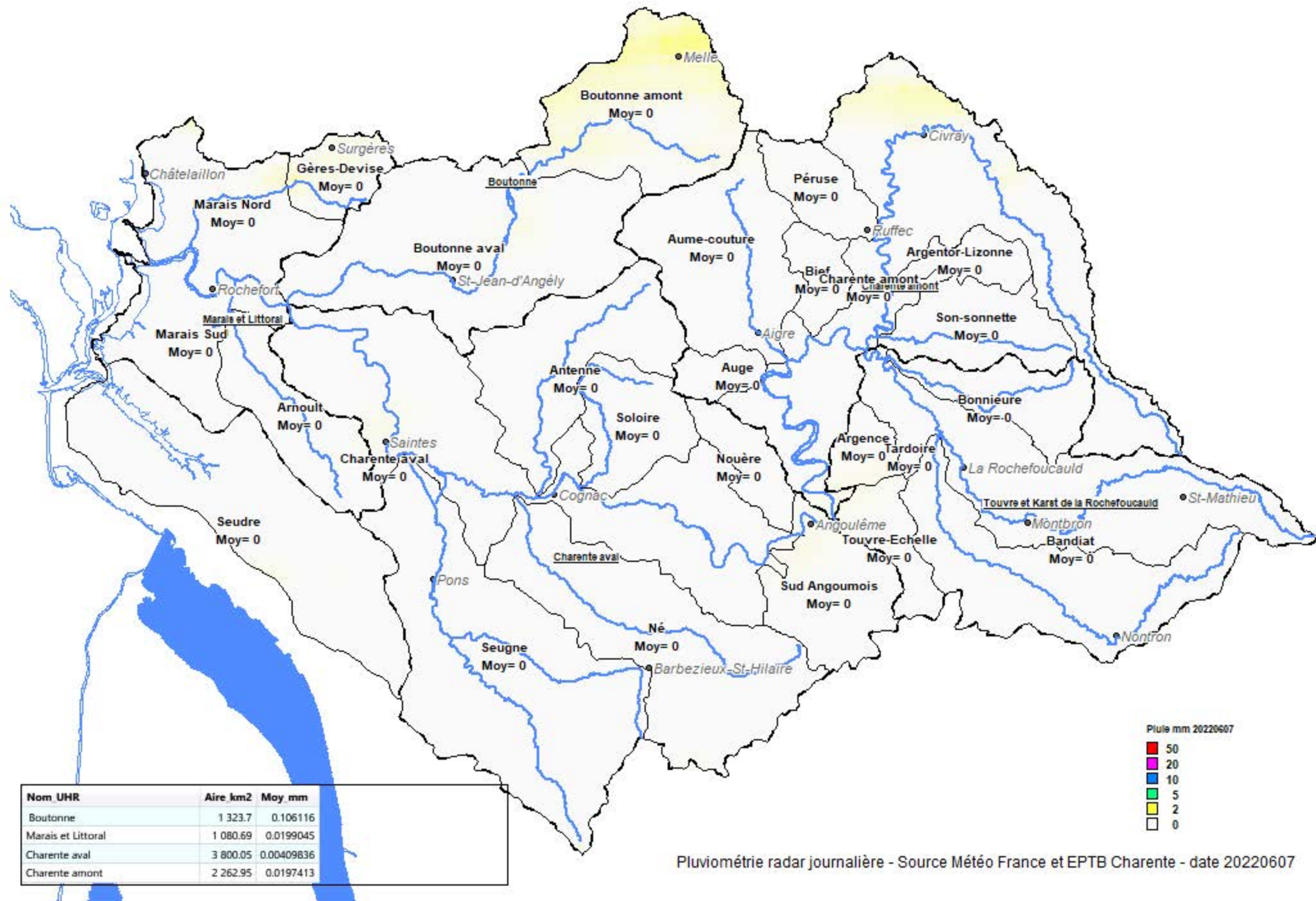
Nom UHR	Aire km2	Moy mm
Boutonne	1 323.7	0
Marais et Littoral	1 080.69	0
Charente aval	3 800.05	0.00034153
Charente amont	2 262.95	0.0115633

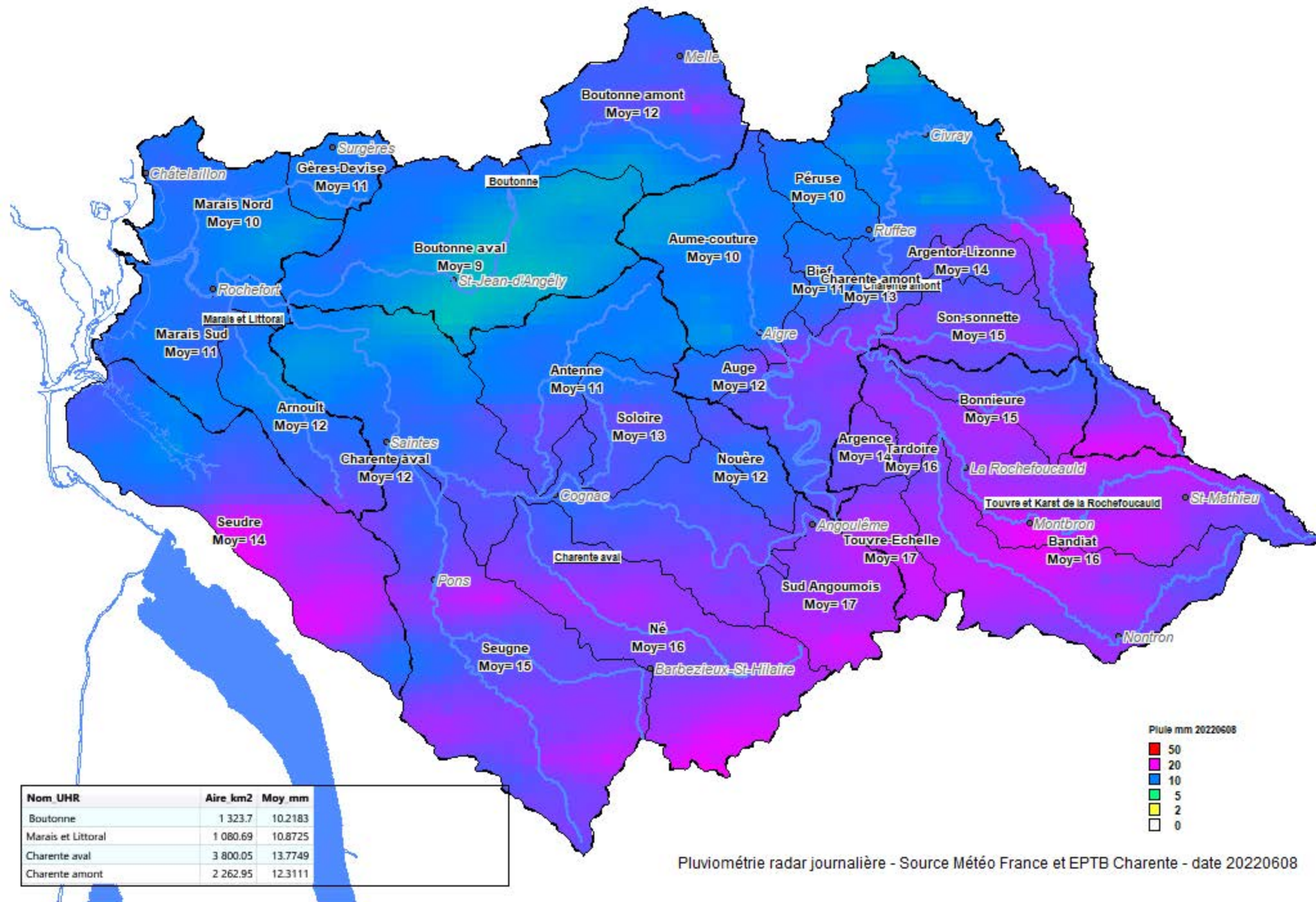


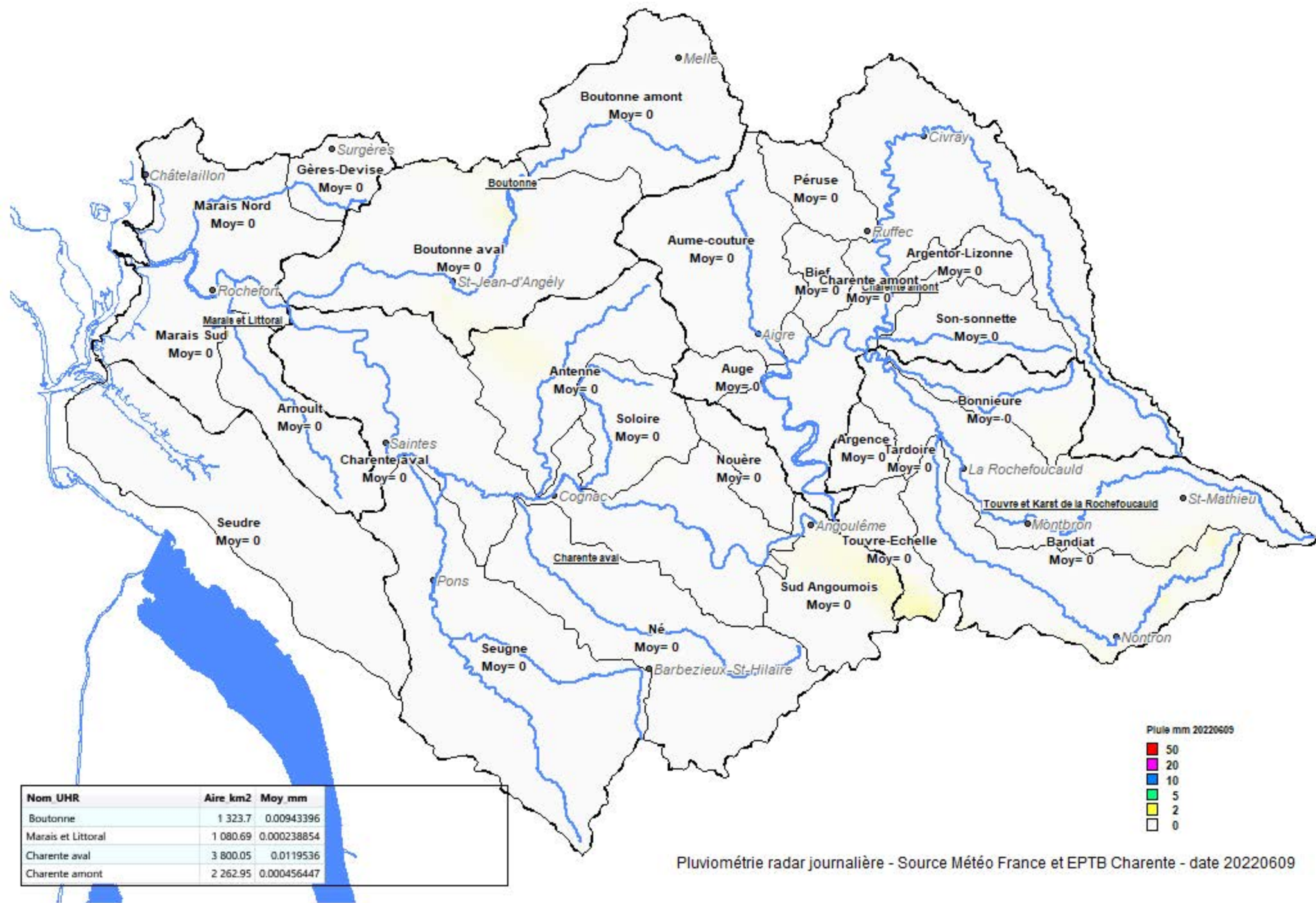
Pluviométrie radar journalière - Source Météo France et EPTB Charente - date 20220605



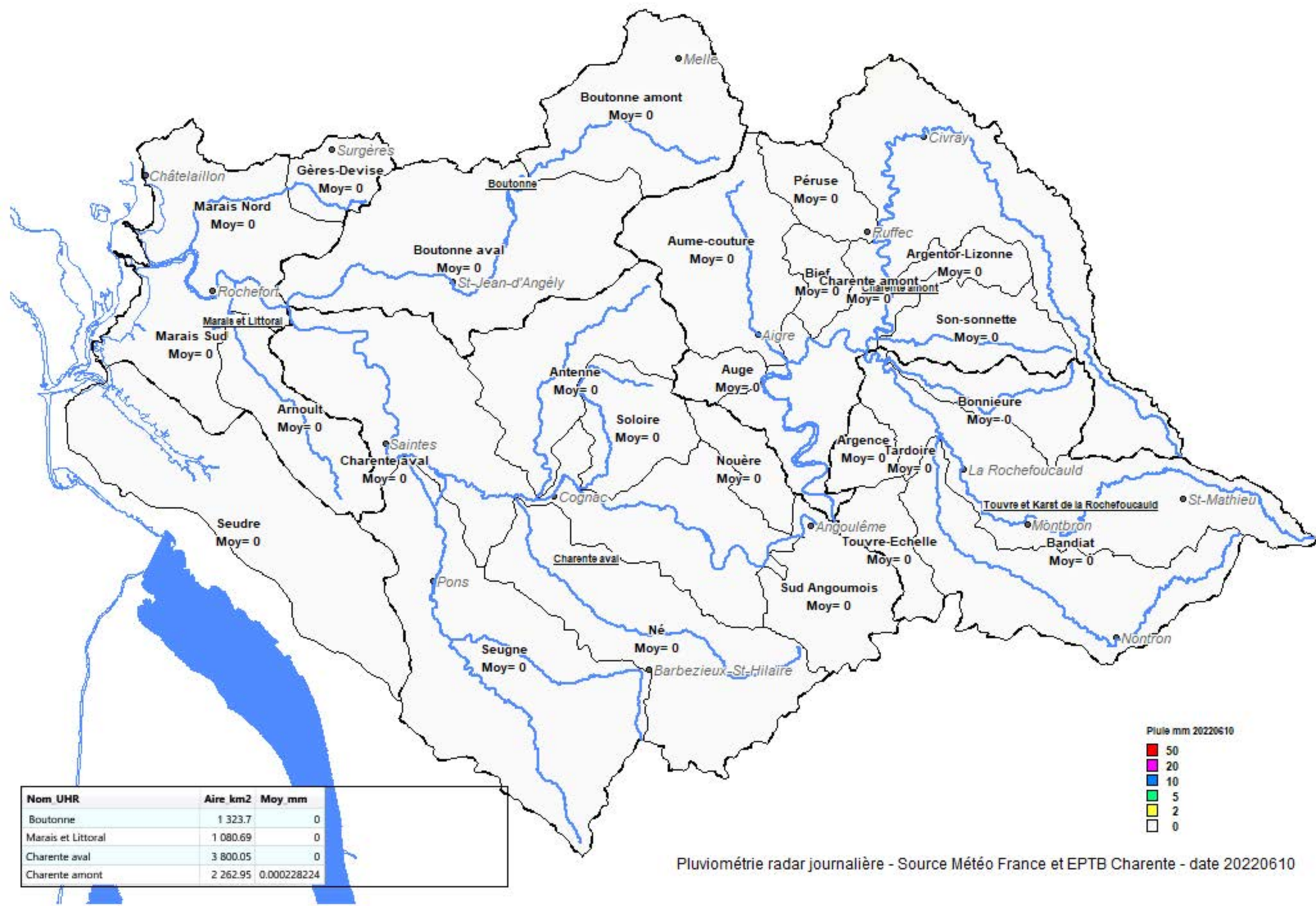
Pluimétrie radar journalière - Source Météo France et EPTB Charente - date 20220606







Pluviométrie radar journalière - Source Météo France et EPTB Charente - date 20220609

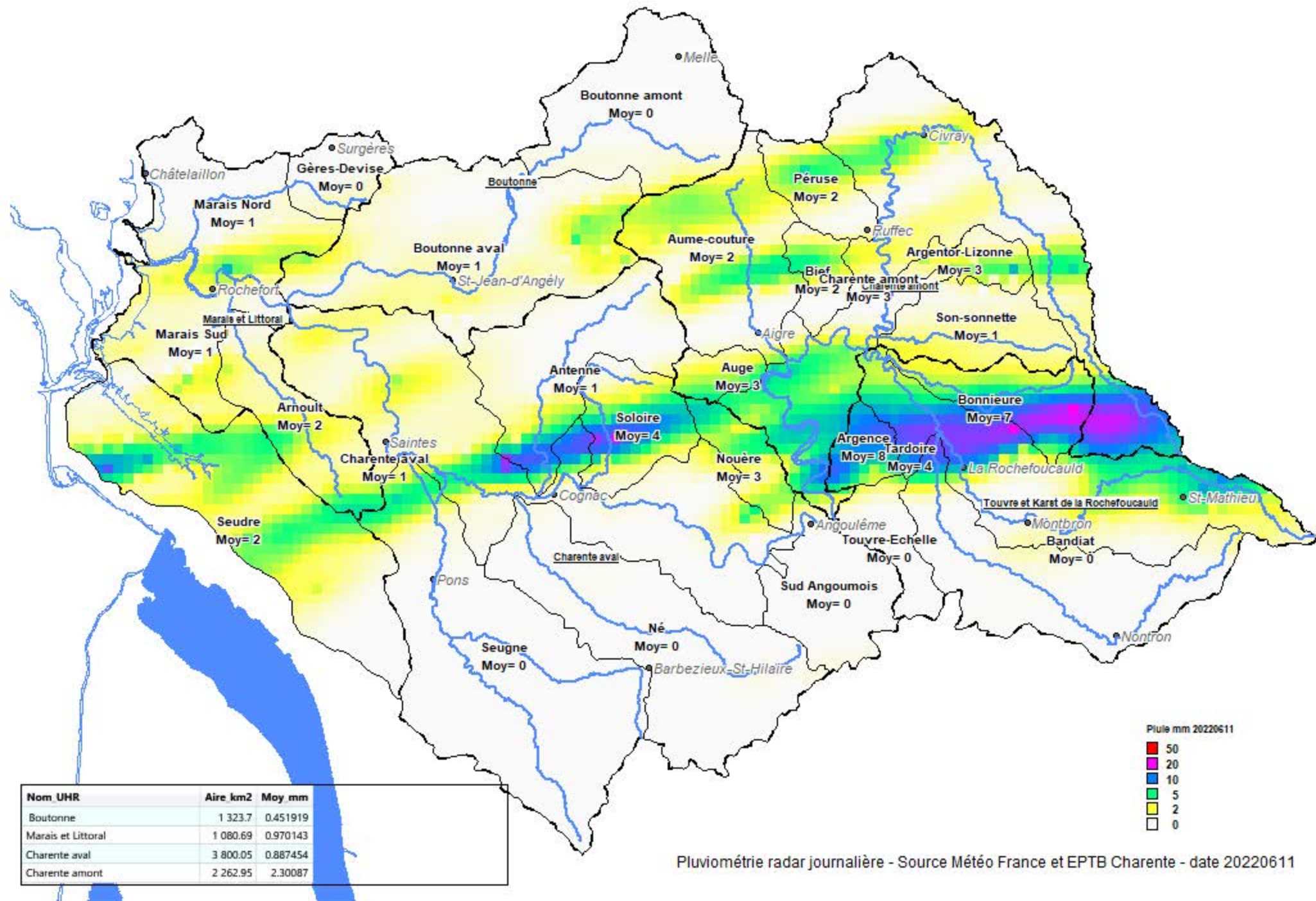


Nom UHR	Aire km2	Moy mm
Boutonne	1 323.7	0
Marais et Littoral	1 080.69	0
Charente aval	3 800.05	0
Charente amont	2 262.95	0.000228224

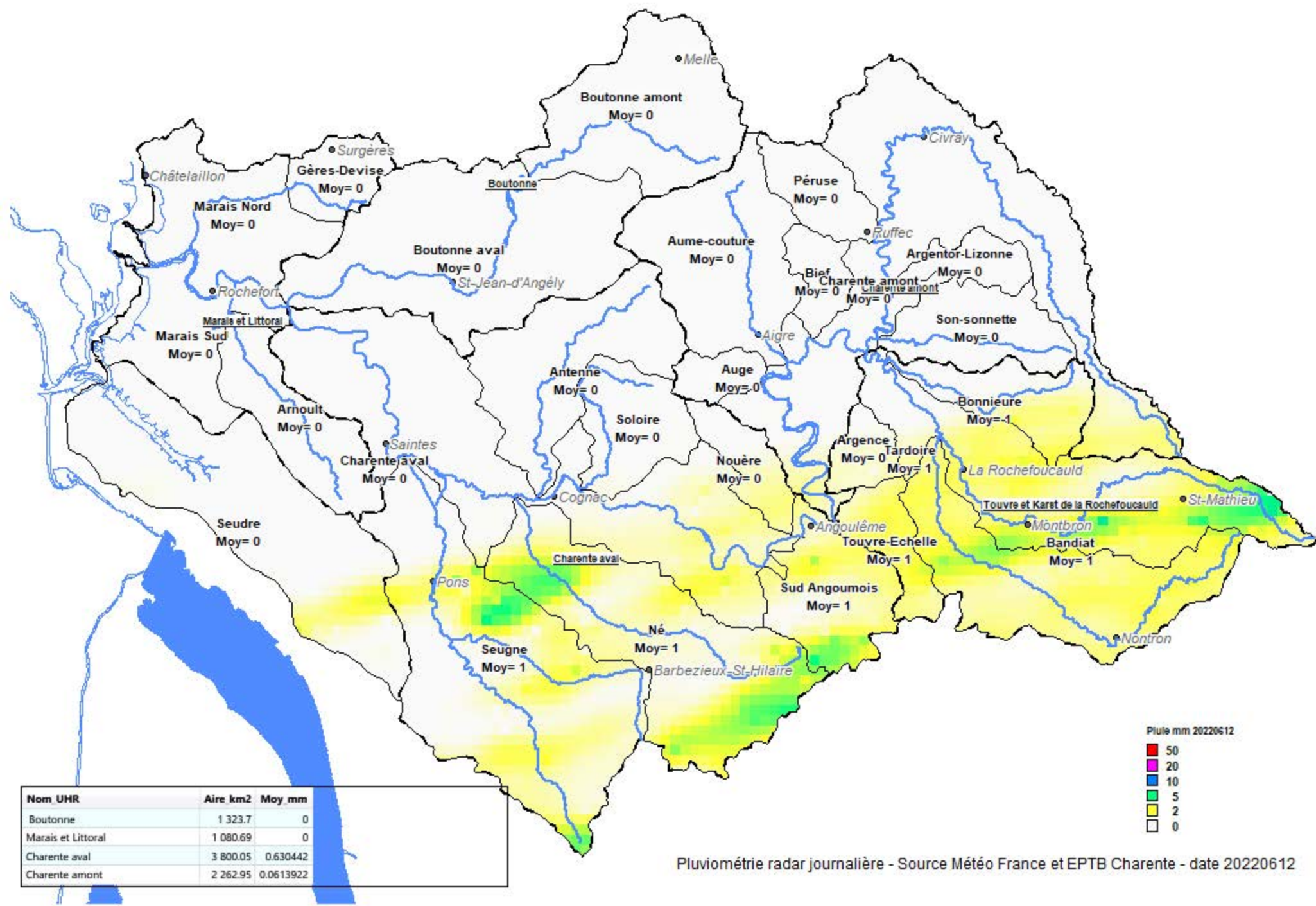
Pluie mm 20220610

- 50
- 20
- 10
- 5
- 2
- 0

Pluviométrie radar journalière - Source Météo France et EPTB Charente - date 20220610



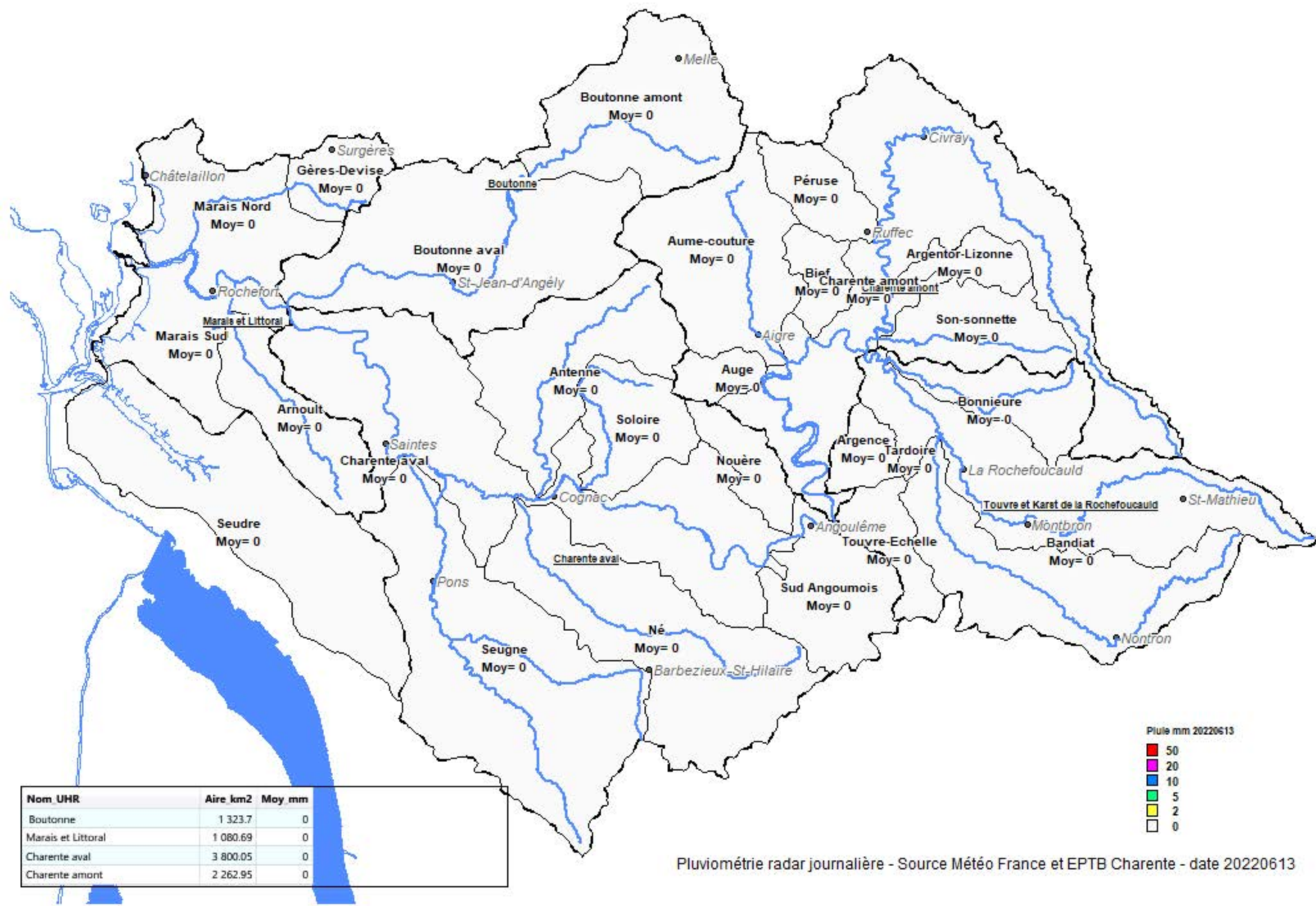
Pluimétrie radar journalière - Source Météo France et EPTB Charente - date 20220611



Nom UHR	Aire km2	Moy mm
Boutonne	1 323.7	0
Marais et Littoral	1 080.69	0
Charente aval	3 800.05	0.630442
Charente amont	2 262.95	0.0613922



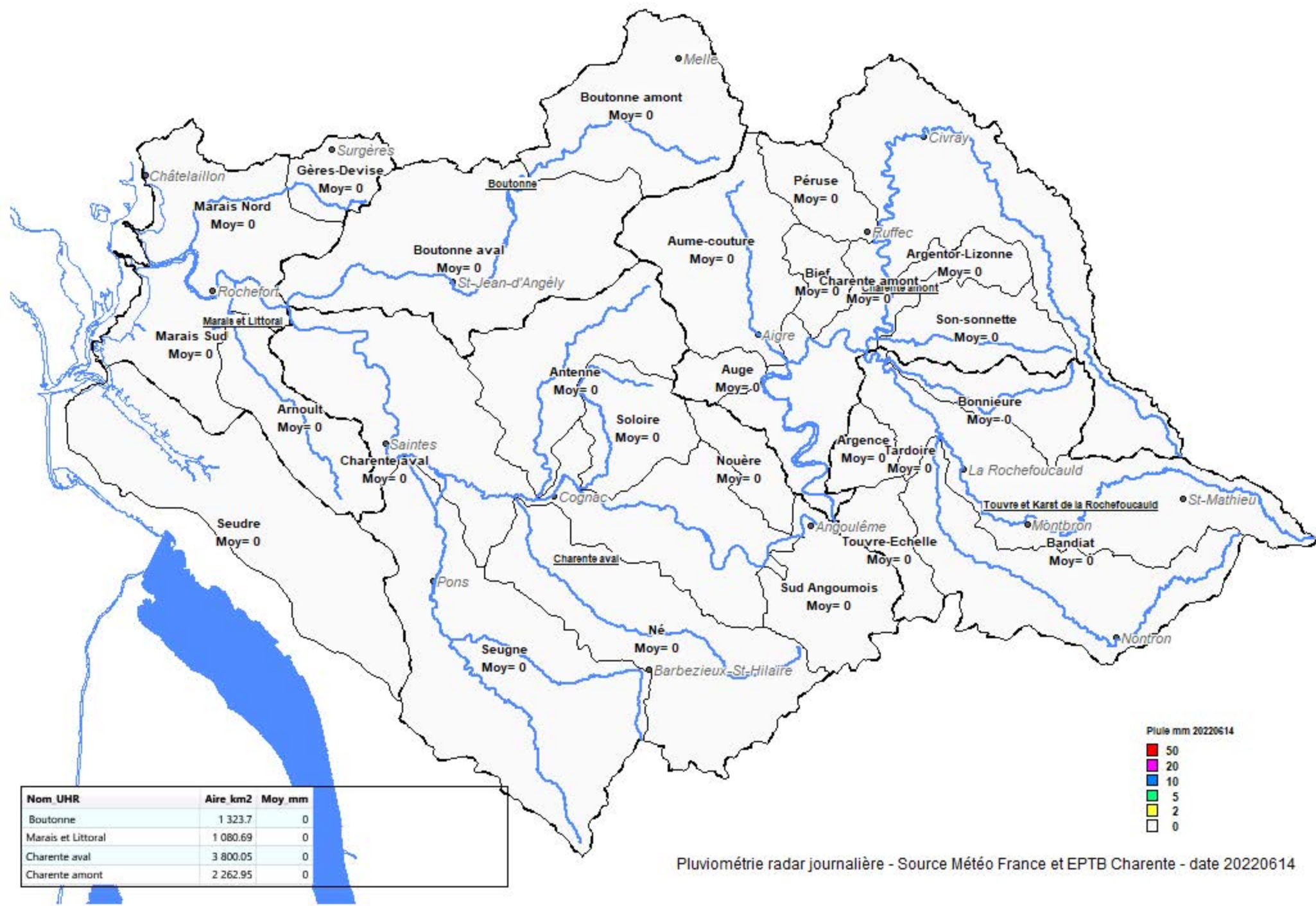
Pluviométrie radar journalière - Source Météo France et EPTB Charente - date 20220612



Nom UHR	Aire km2	Moy mm
Boutonne	1 323.7	0
Marais et Littoral	1 080.69	0
Charente aval	3 800.05	0
Charente amont	2 262.95	0



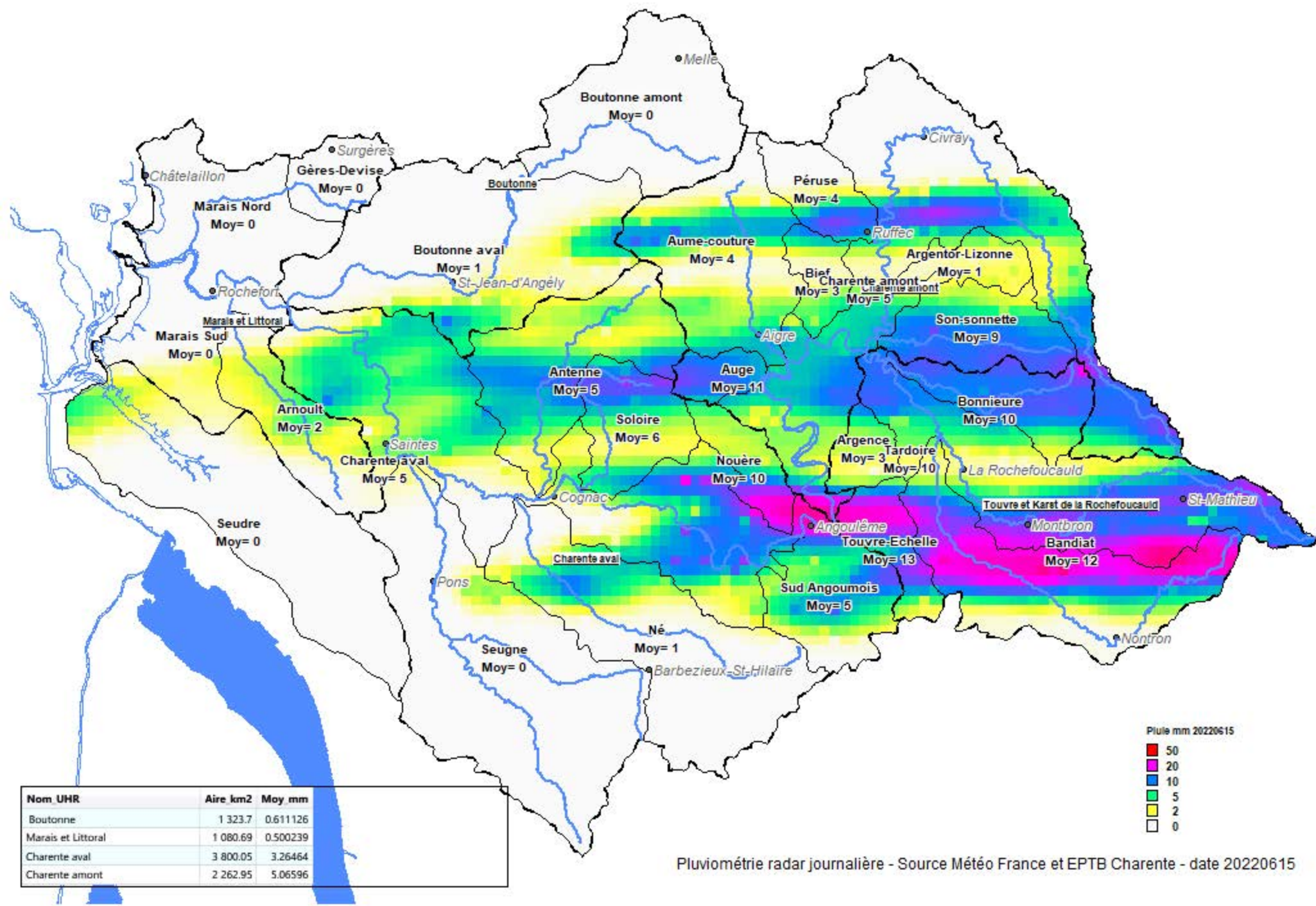
Pluviométrie radar journalière - Source Météo France et EPTB Charente - date 20220613



Nom UHR	Aire km2	Moy mm
Boutonne	1 323.7	0
Marais et Littoral	1 080.69	0
Charente aval	3 800.05	0
Charente amont	2 262.95	0



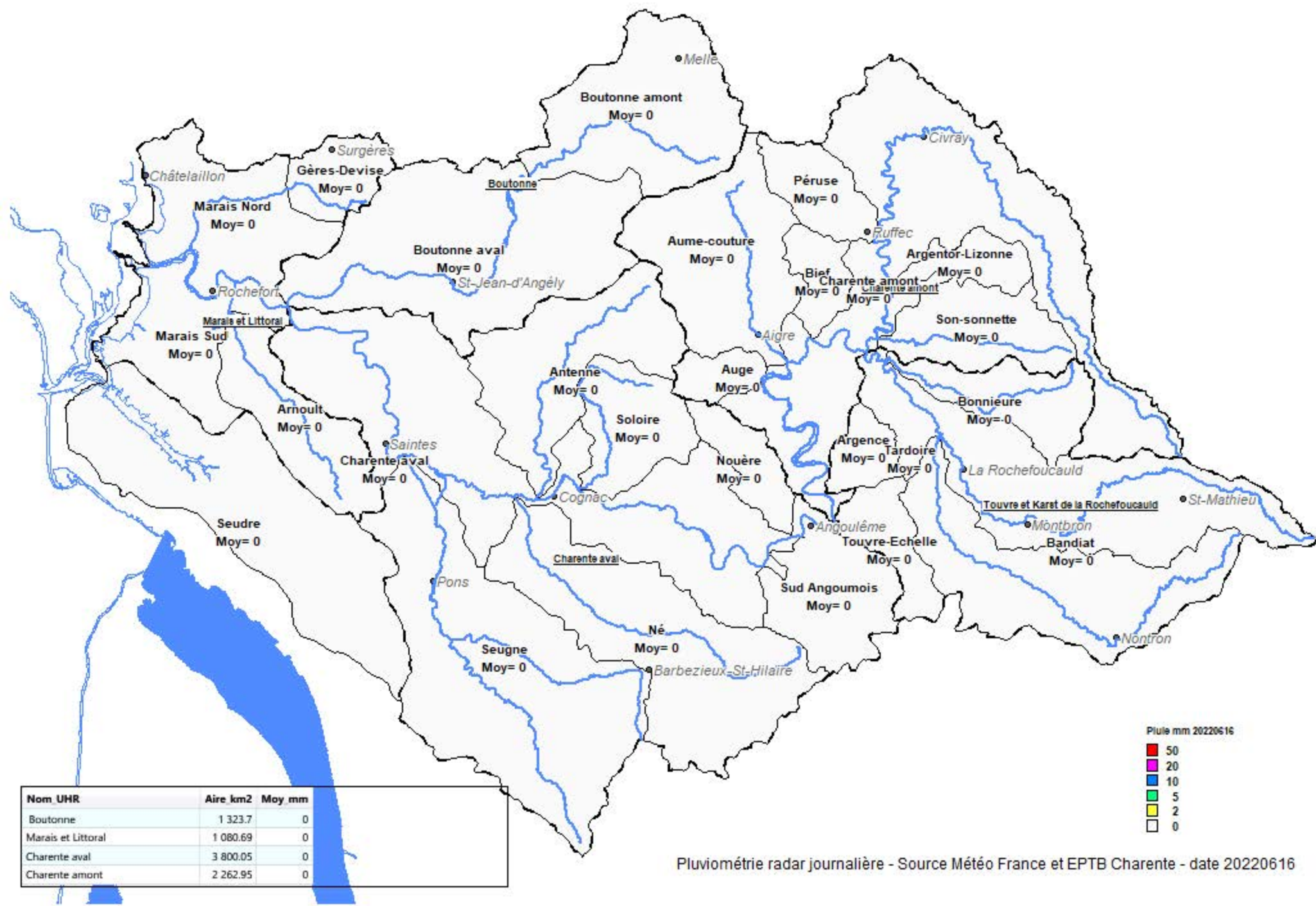
Pluviométrie radar journalière - Source Météo France et EPTB Charente - date 20220614



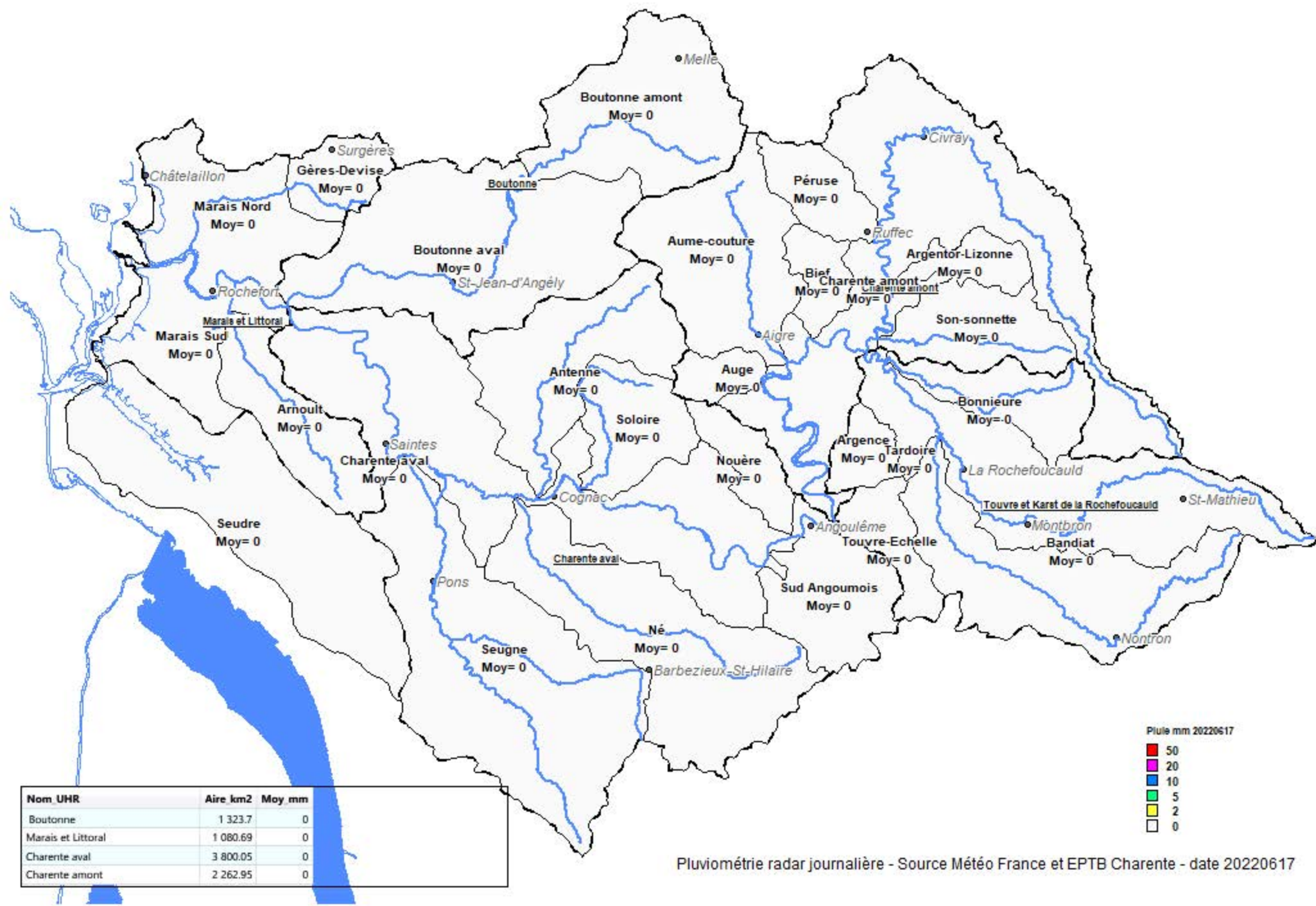
Nom UHR	Aire km2	Moy mm
Boutonne	1 323.7	0.611126
Marais et Littoral	1 080.69	0.500239
Charente aval	3 800.05	3.26464
Charente amont	2 262.95	5.06596



Pluimétrie radar journalière - Source Météo France et EPTB Charente - date 20220615



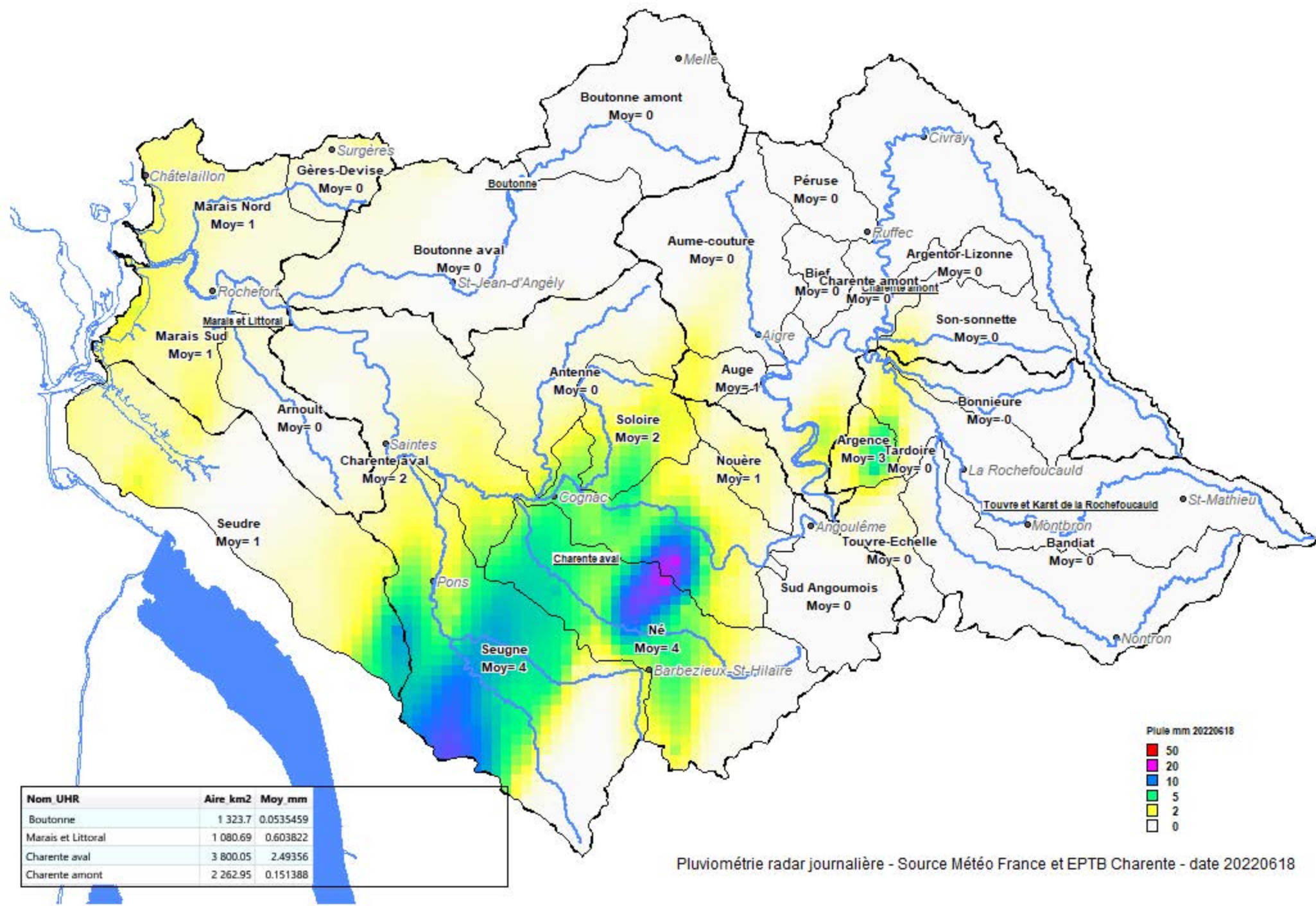
Pluviométrie radar journalière - Source Météo France et EPTB Charente - date 20220616



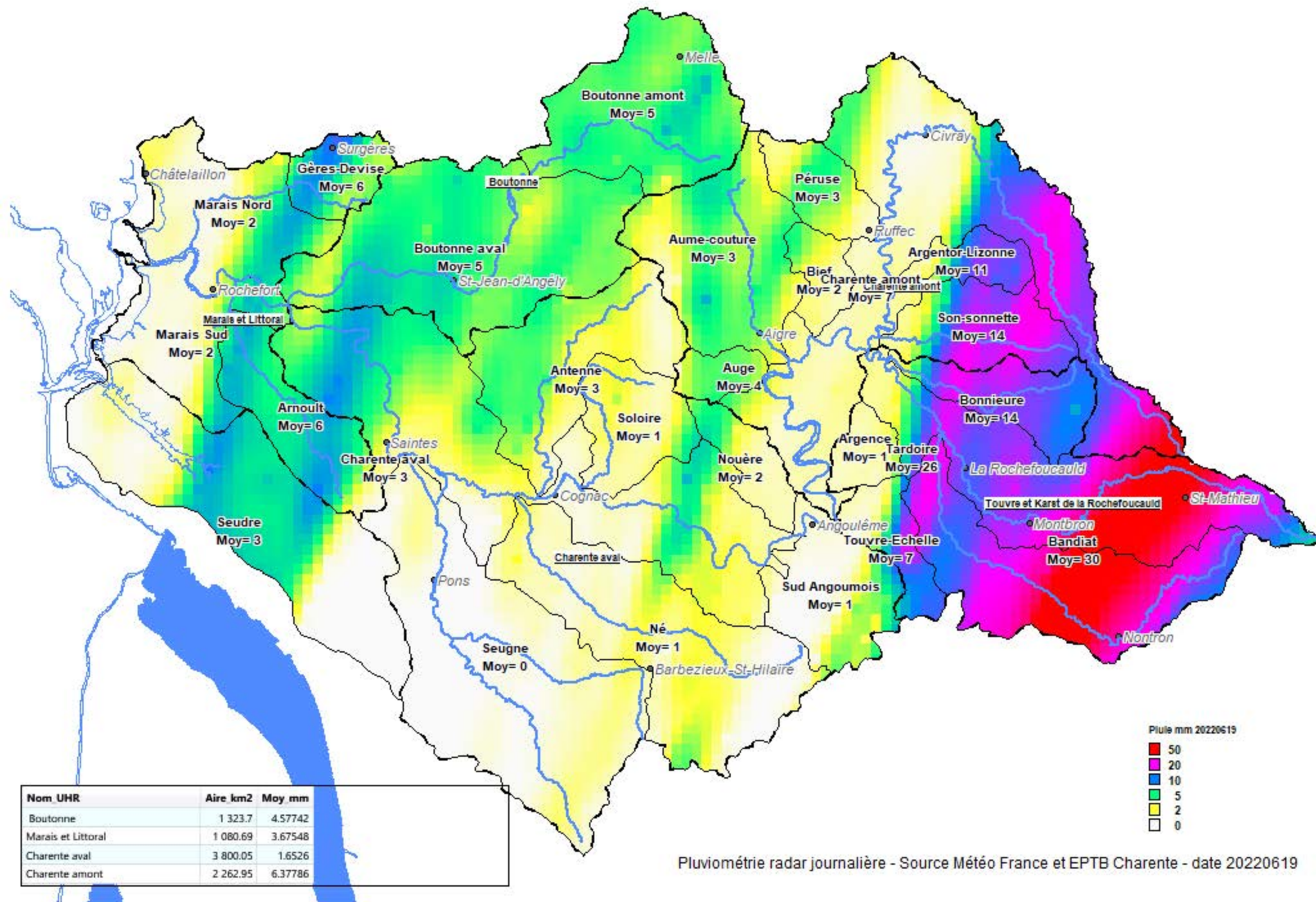
Nom UHR	Aire km2	Moy mm
Boutonne	1 323.7	0
Marais et Littoral	1 080.69	0
Charente aval	3 800.05	0
Charente amont	2 262.95	0



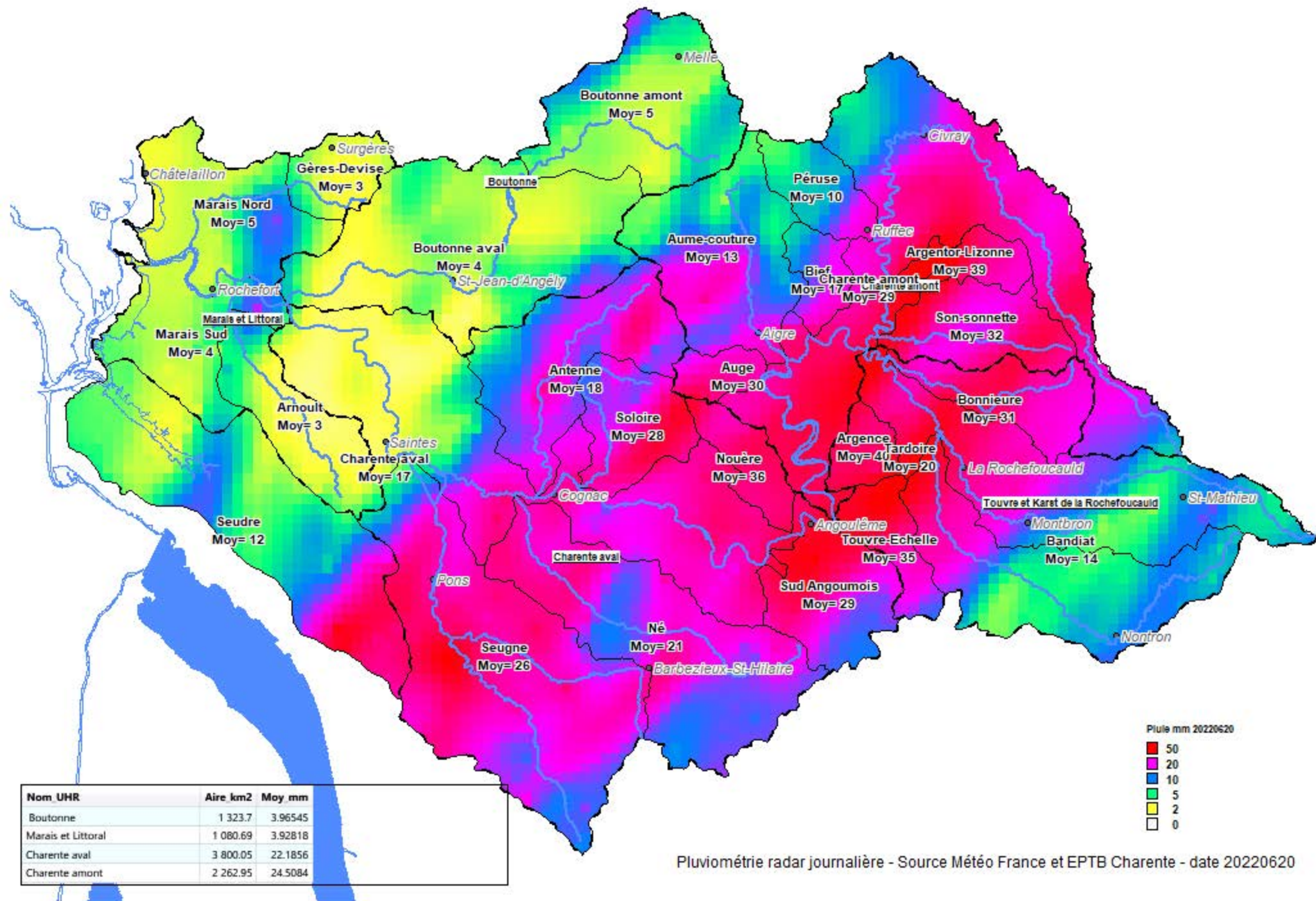
Pluviométrie radar journalière - Source Météo France et EPTB Charente - date 20220617

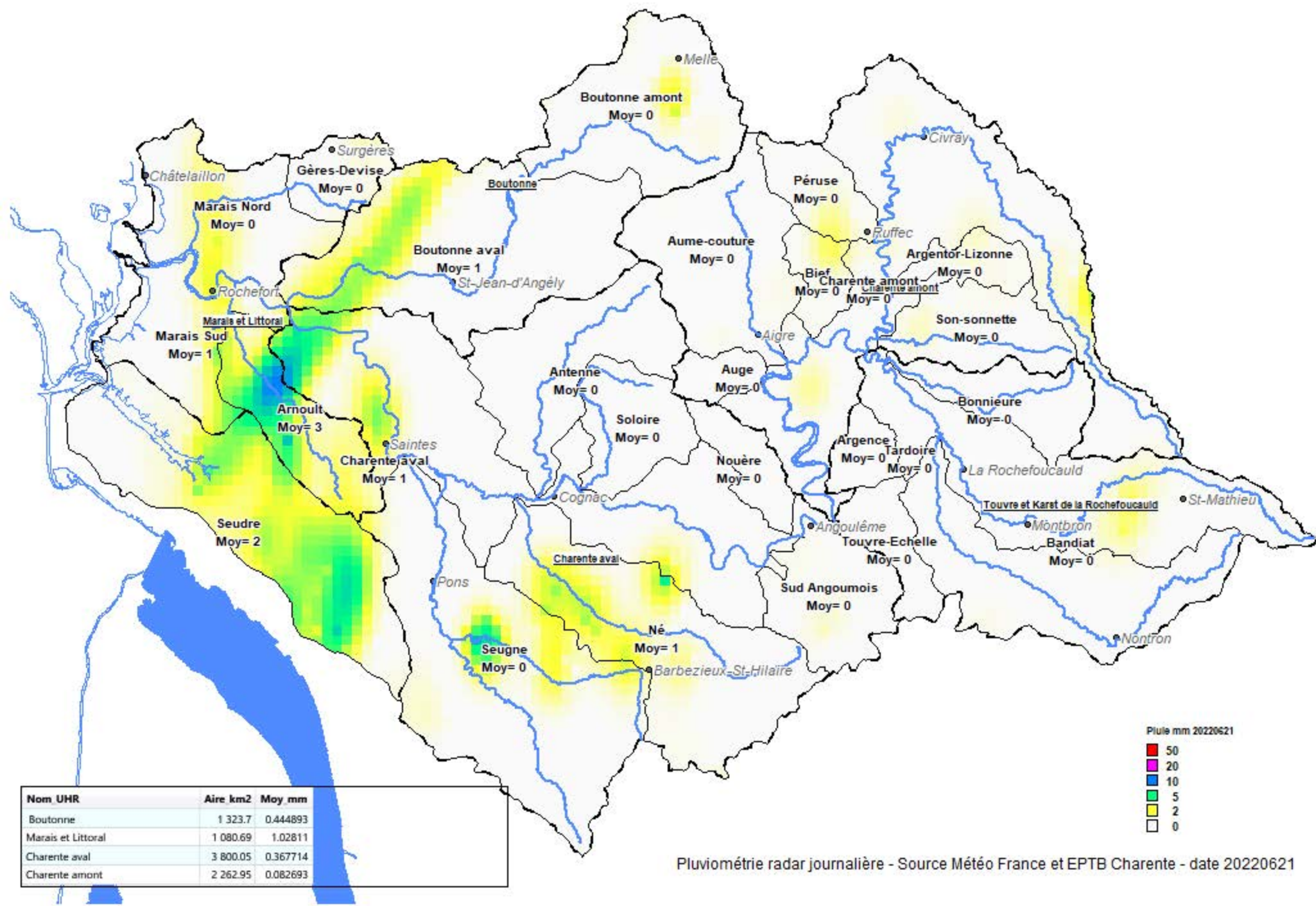


Pluviométrie radar journalière - Source Météo France et EPTB Charente - date 20220618



Pluimétrie radar journalière - Source Météo France et EPTB Charente - date 20220619

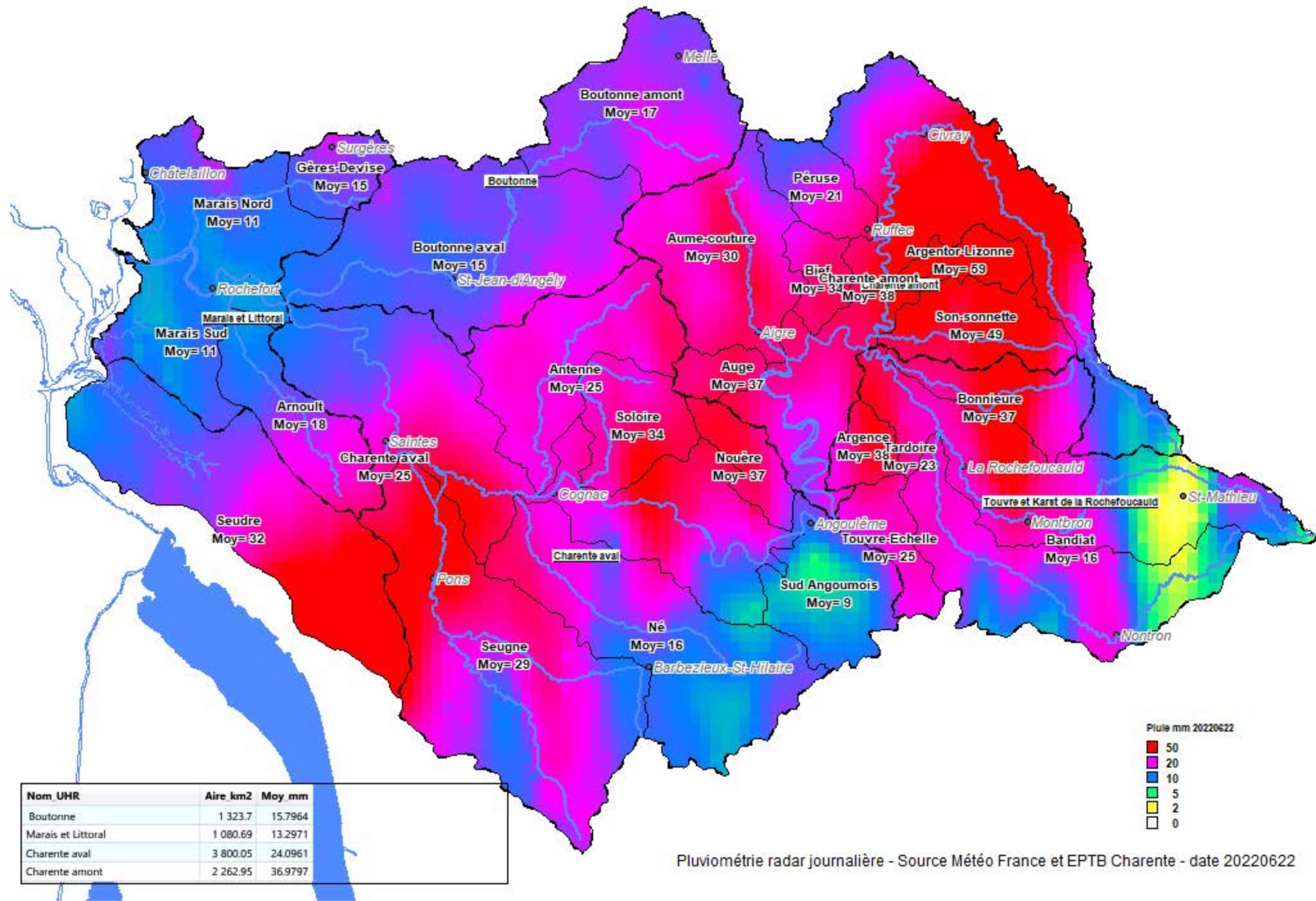


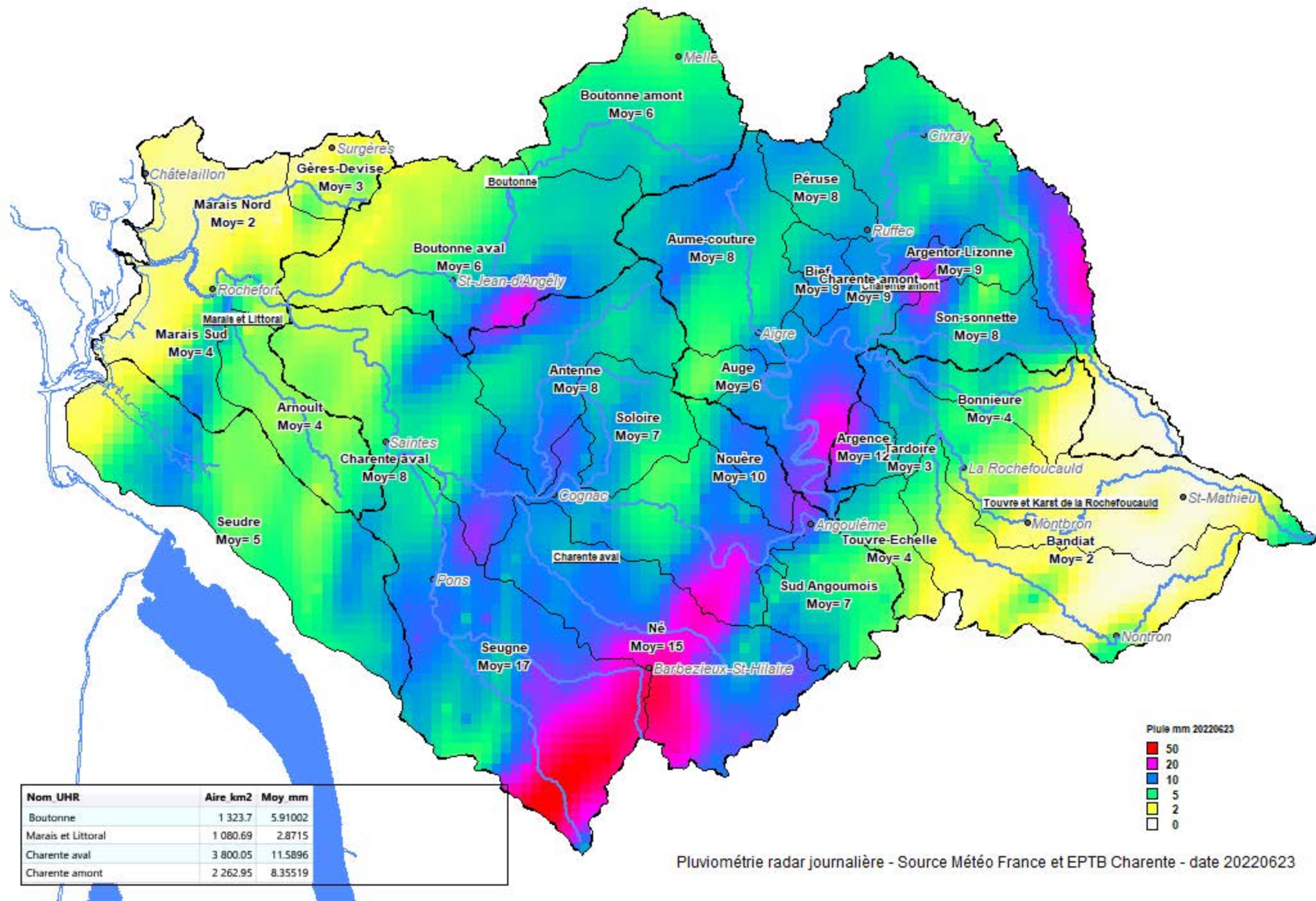


Nom UHR	Aire km2	Moy mm
Boutonne	1 323.7	0.444893
Marais et Littoral	1 080.69	1.02811
Charente aval	3 800.05	0.367714
Charente amont	2 262.95	0.082693

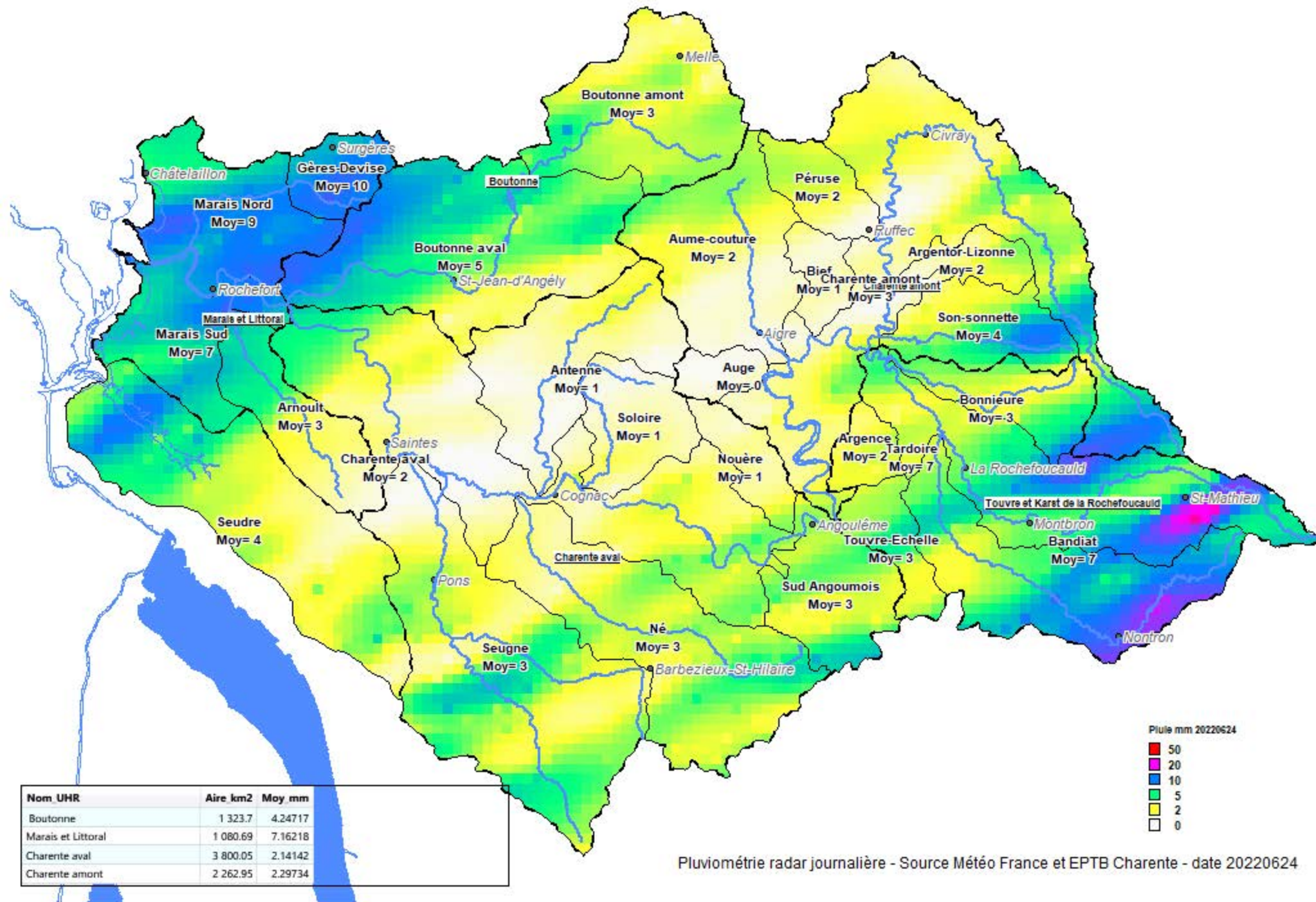


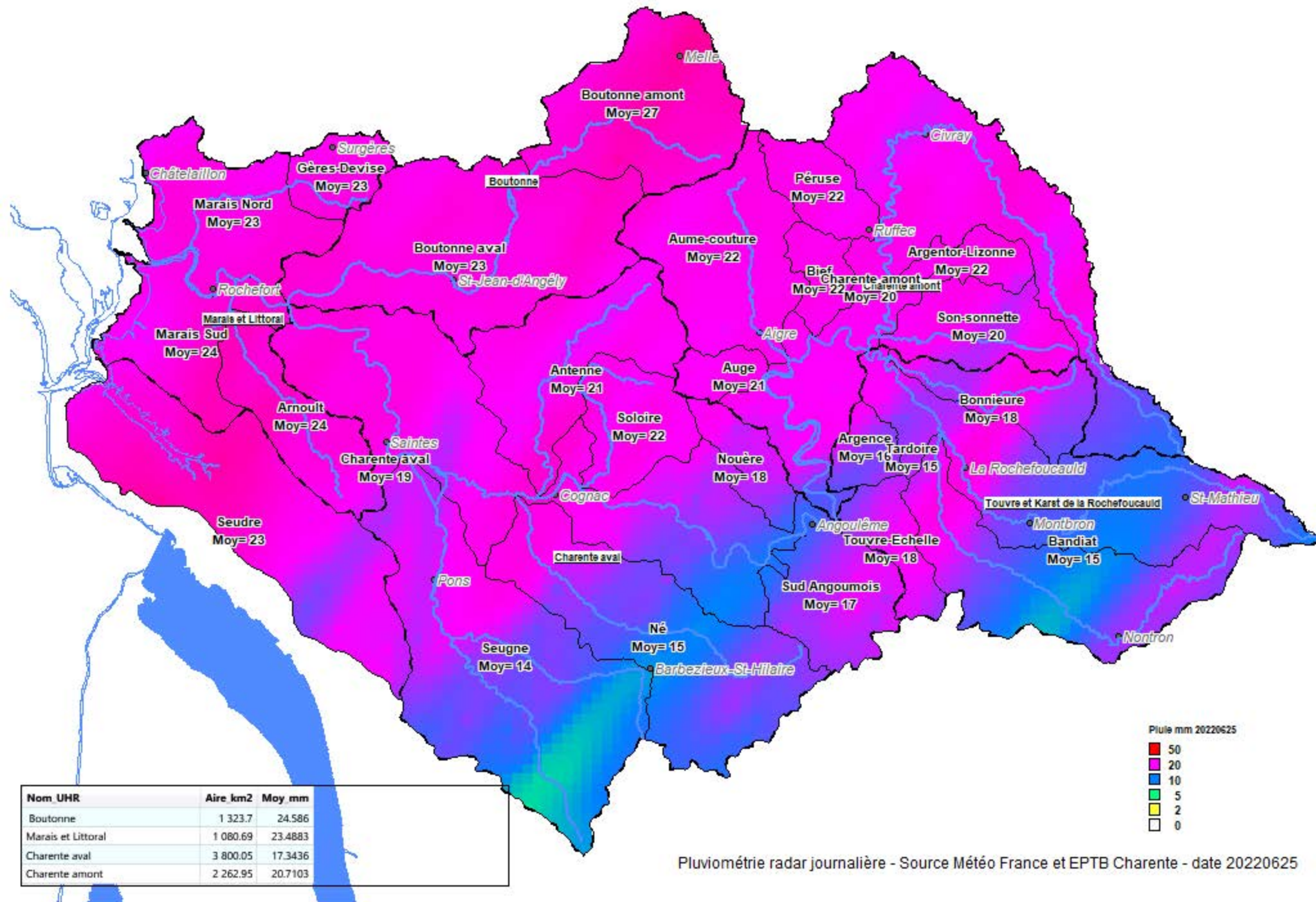
Pluviométrie radar journalière - Source Météo France et EPTB Charente - date 20220621

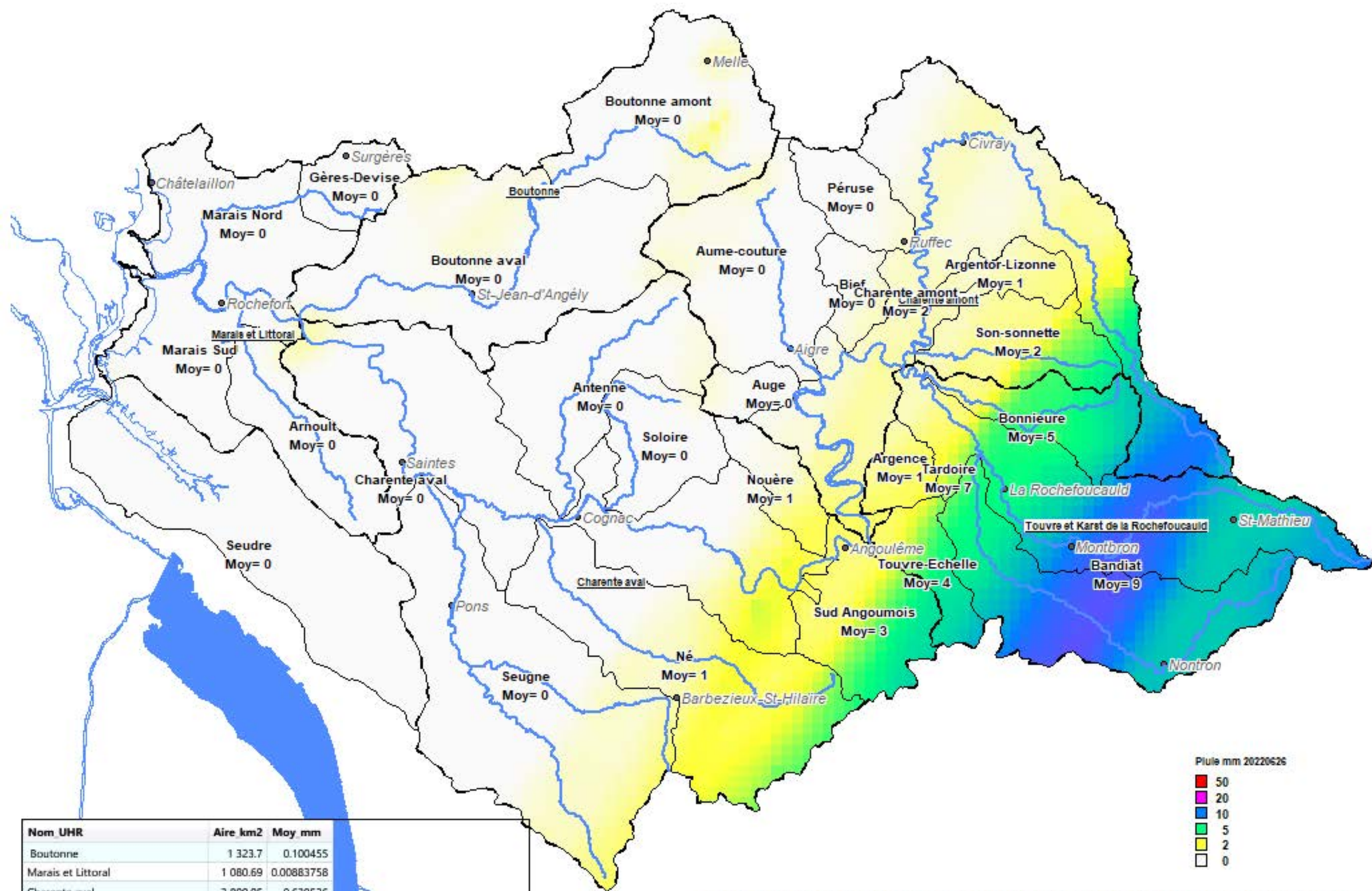




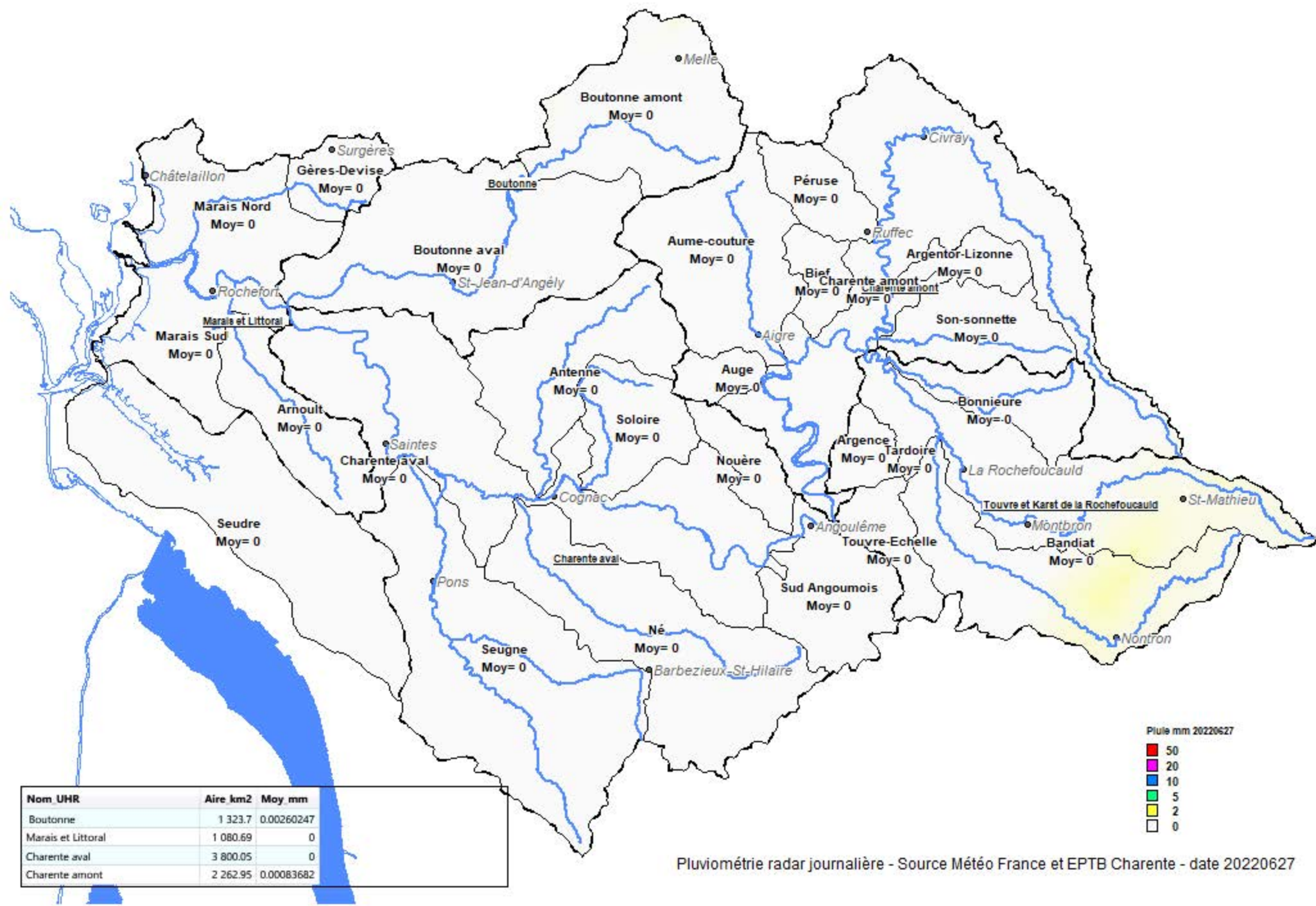
Pluviométrie radar journalière - Source Météo France et EPTB Charente - date 20220623







Pluviométrie radar journalière - Source Météo France et EPTB Charente - date 20220626



Pluviométrie radar journalière - Source Météo France et EPTB Charente - date 20220627

