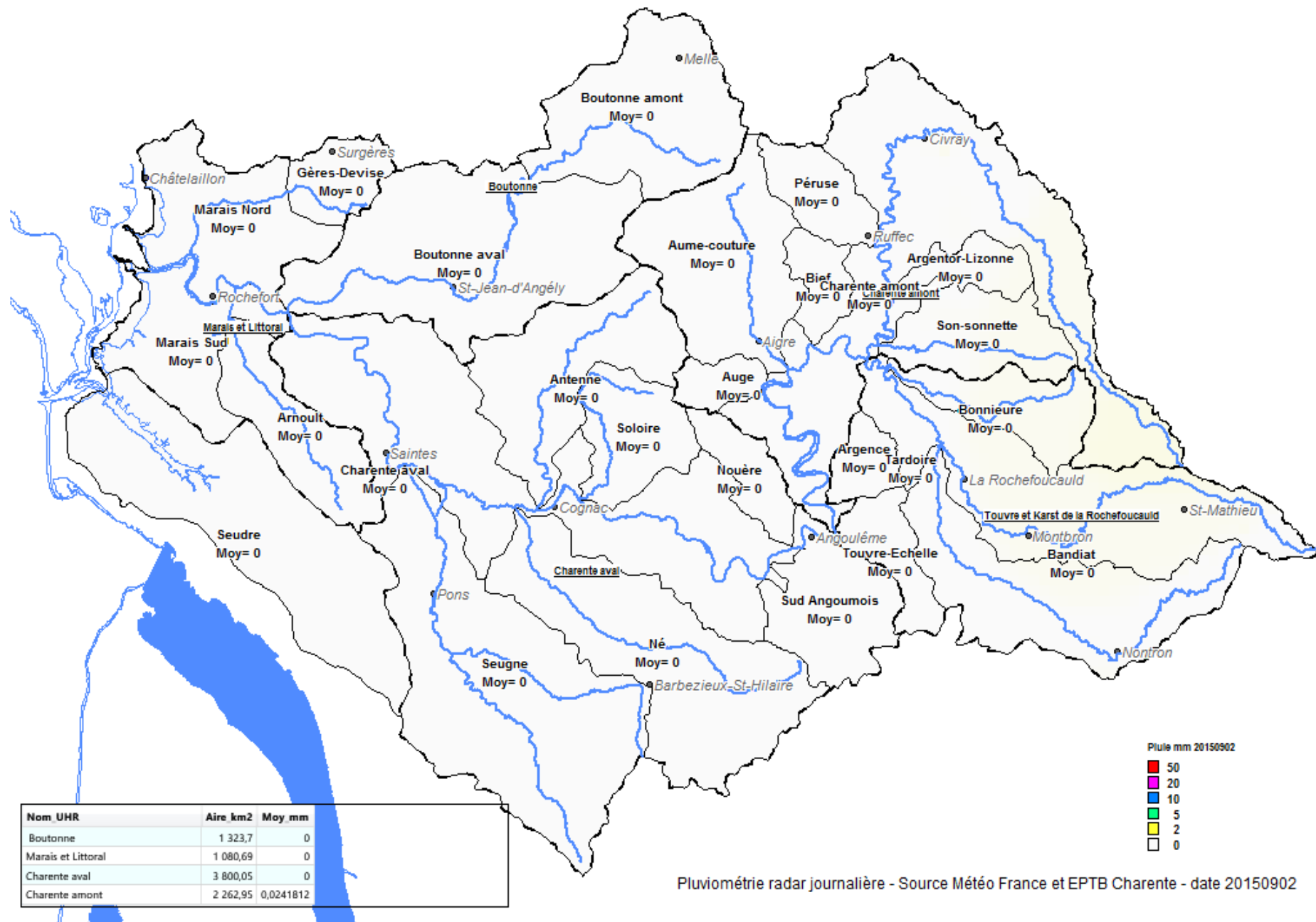
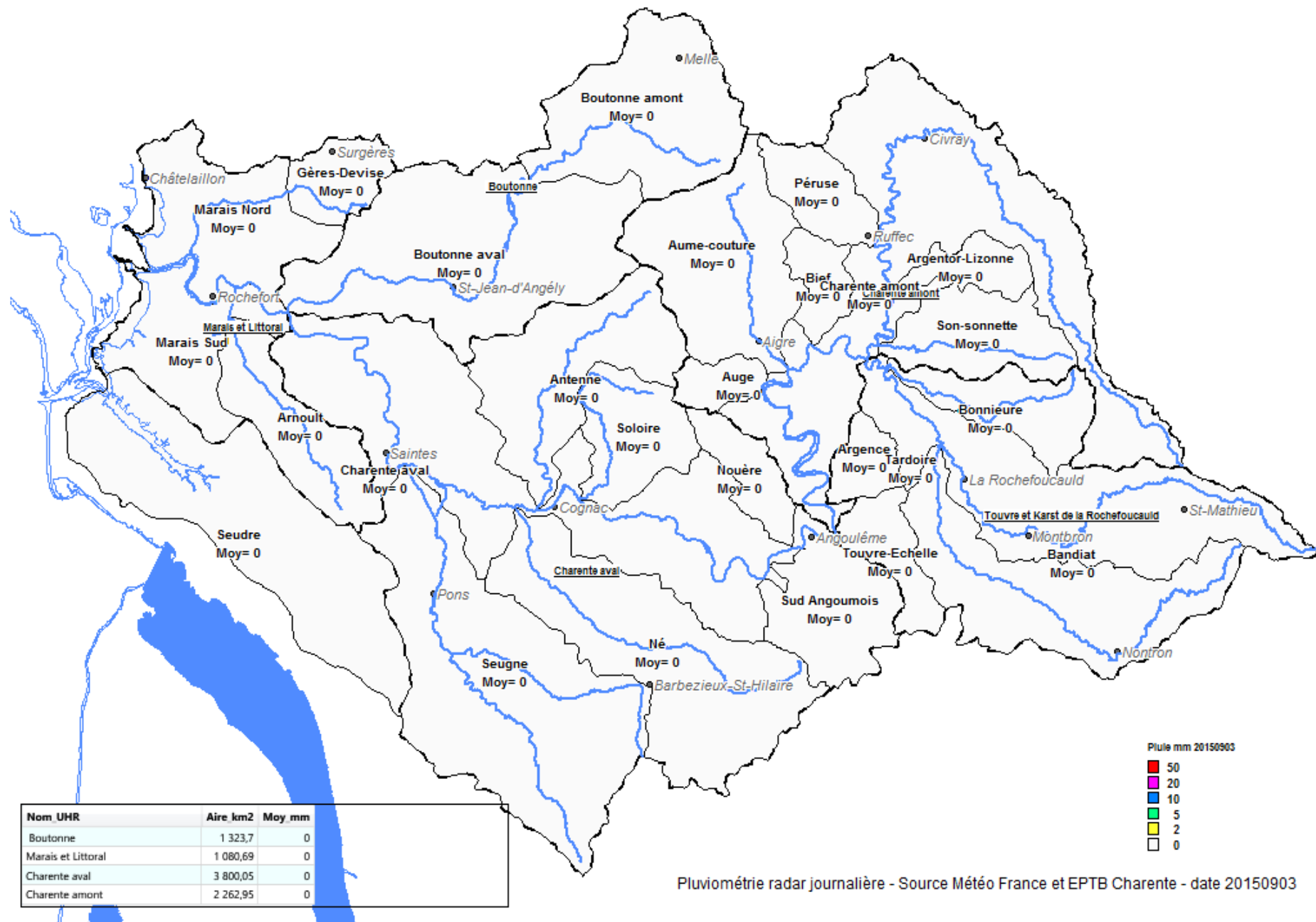
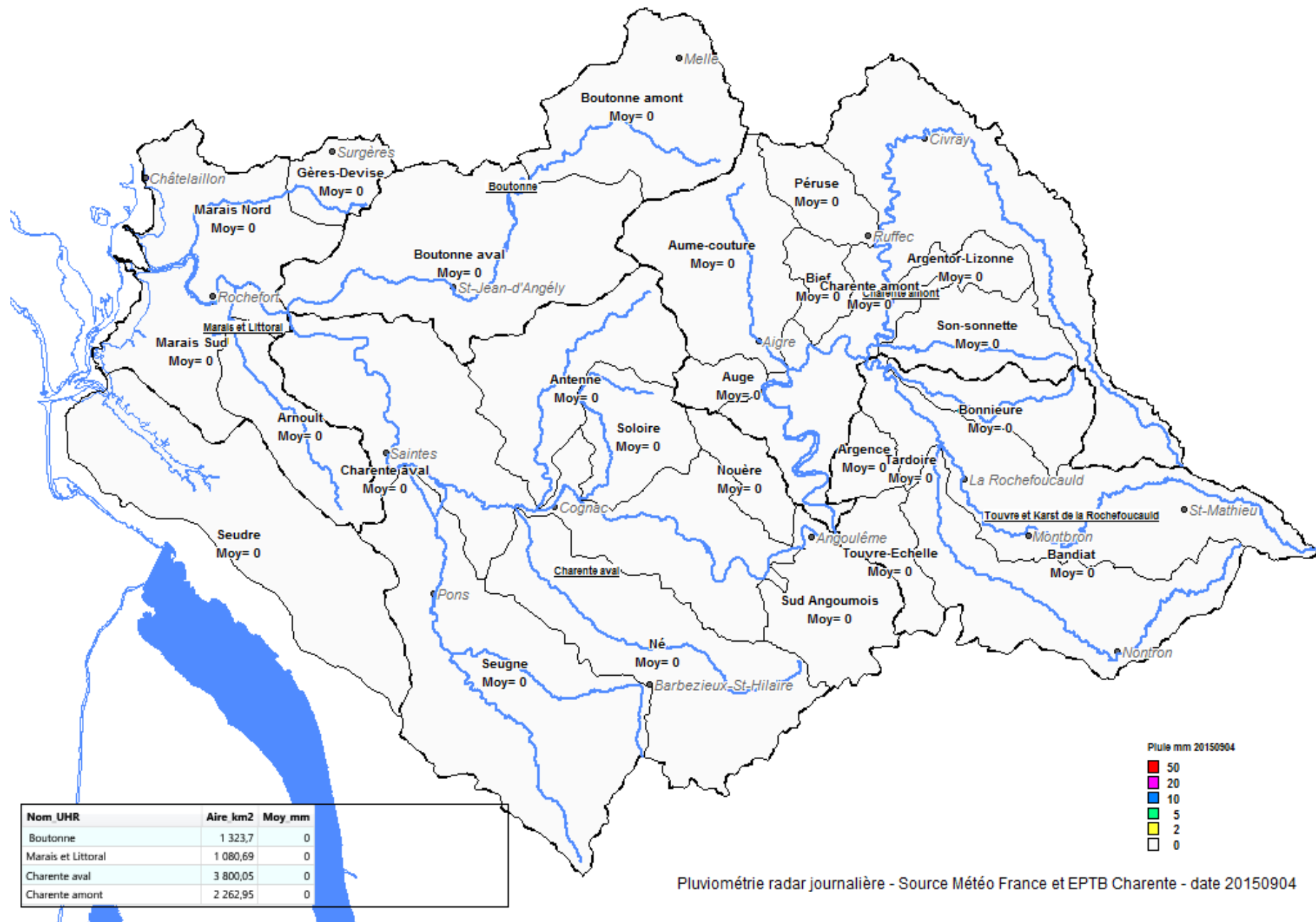
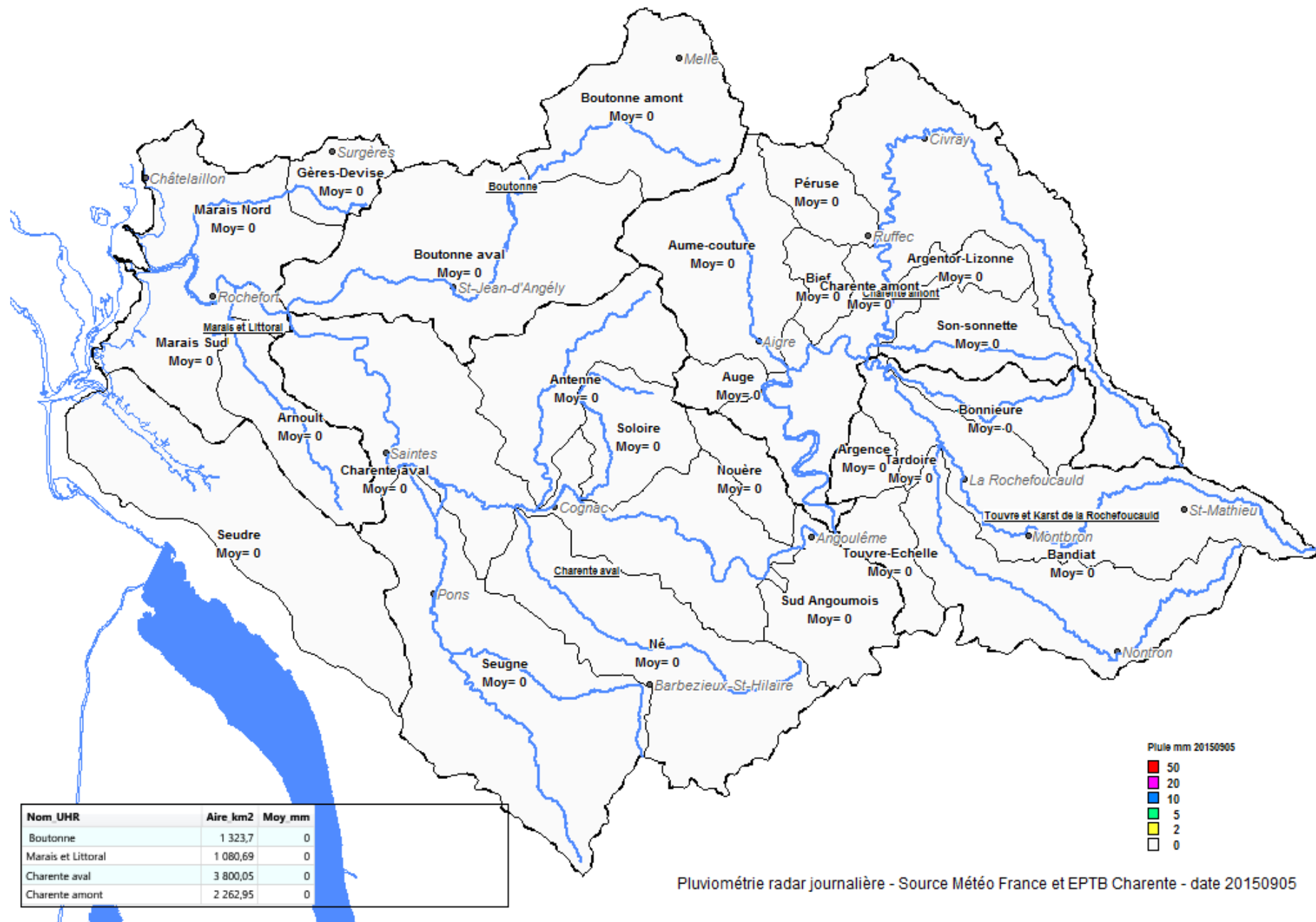


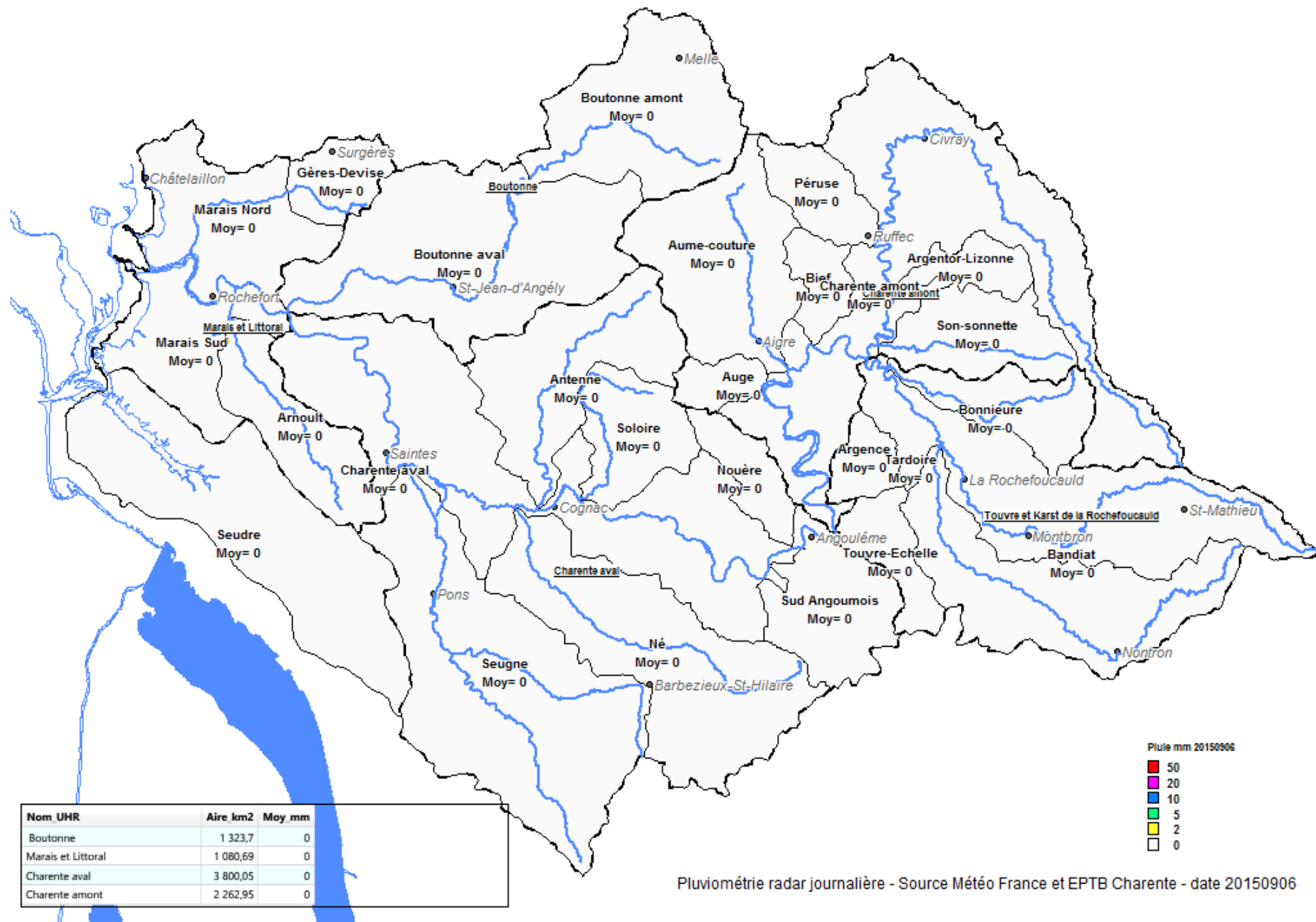
Pluviométrie radar journalière - Source Météo France et EPTB Charente - date 20150901

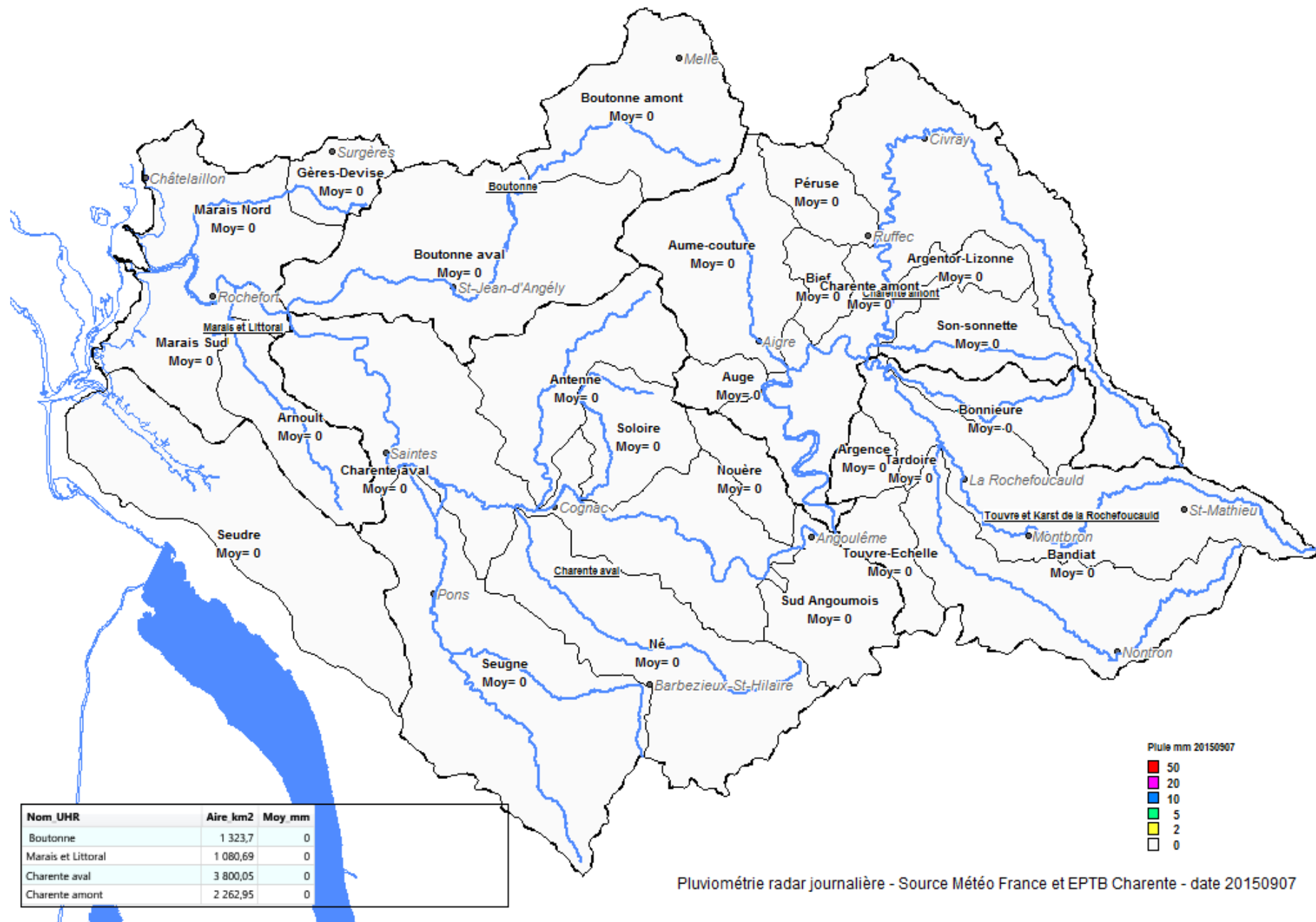


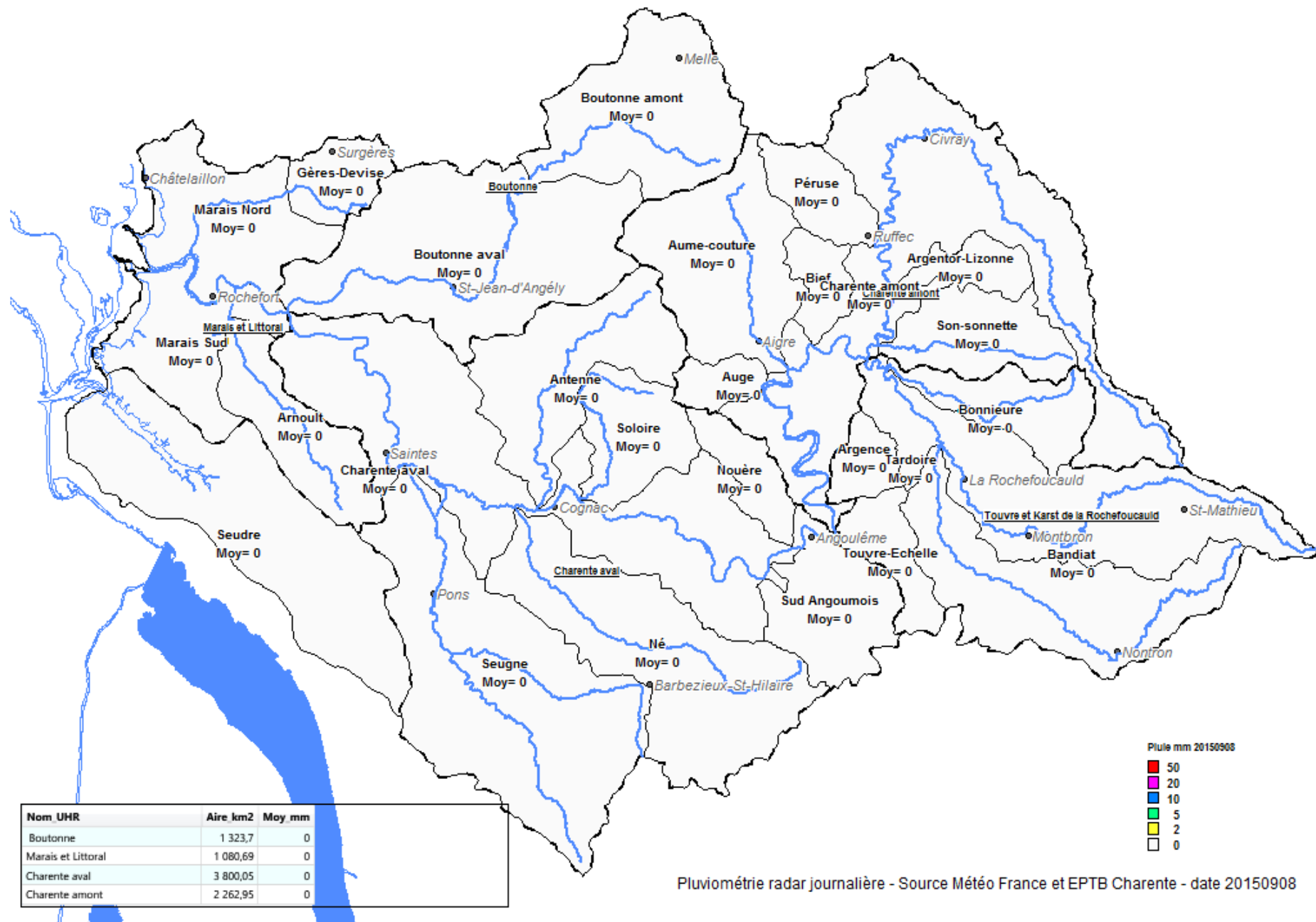


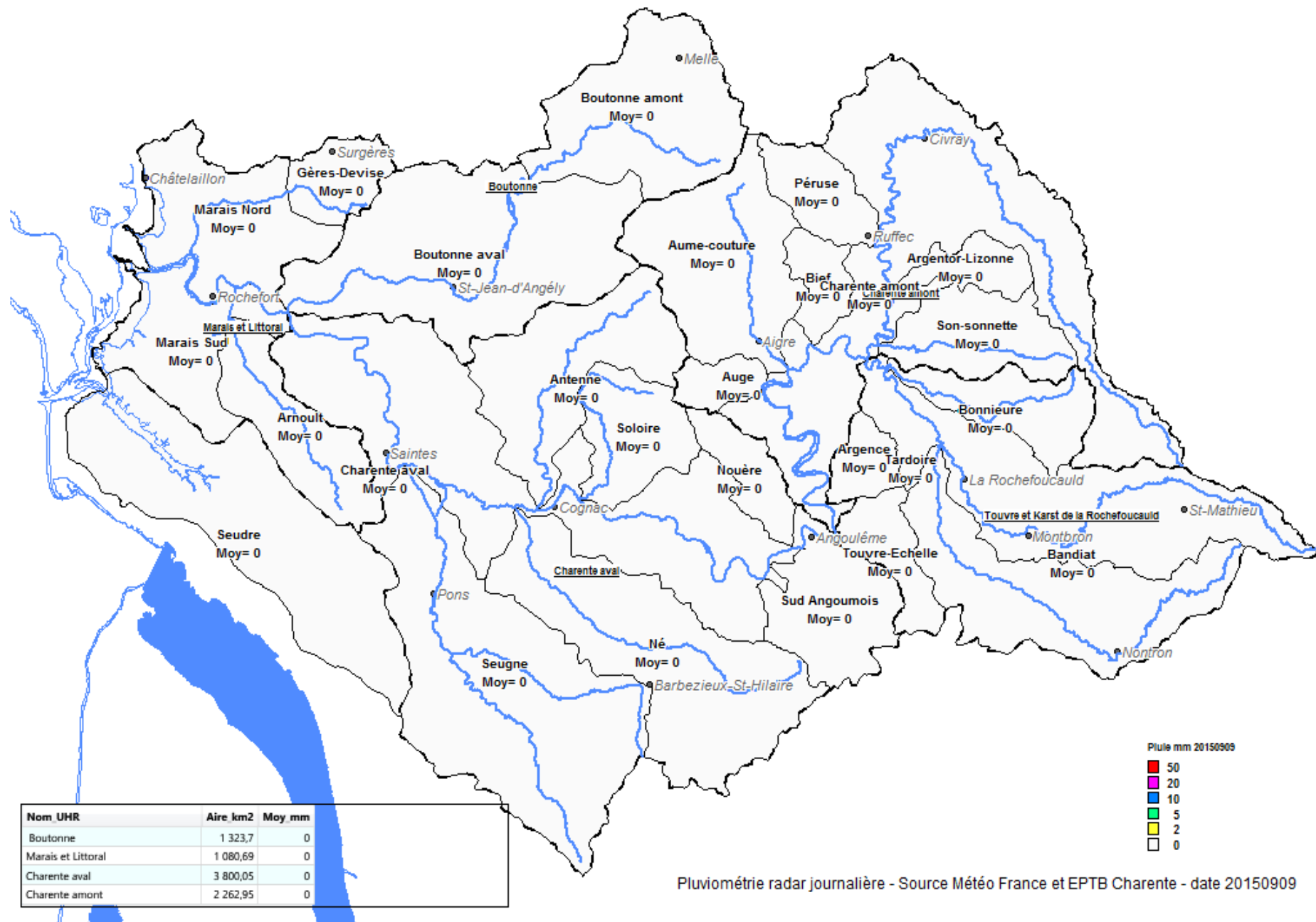


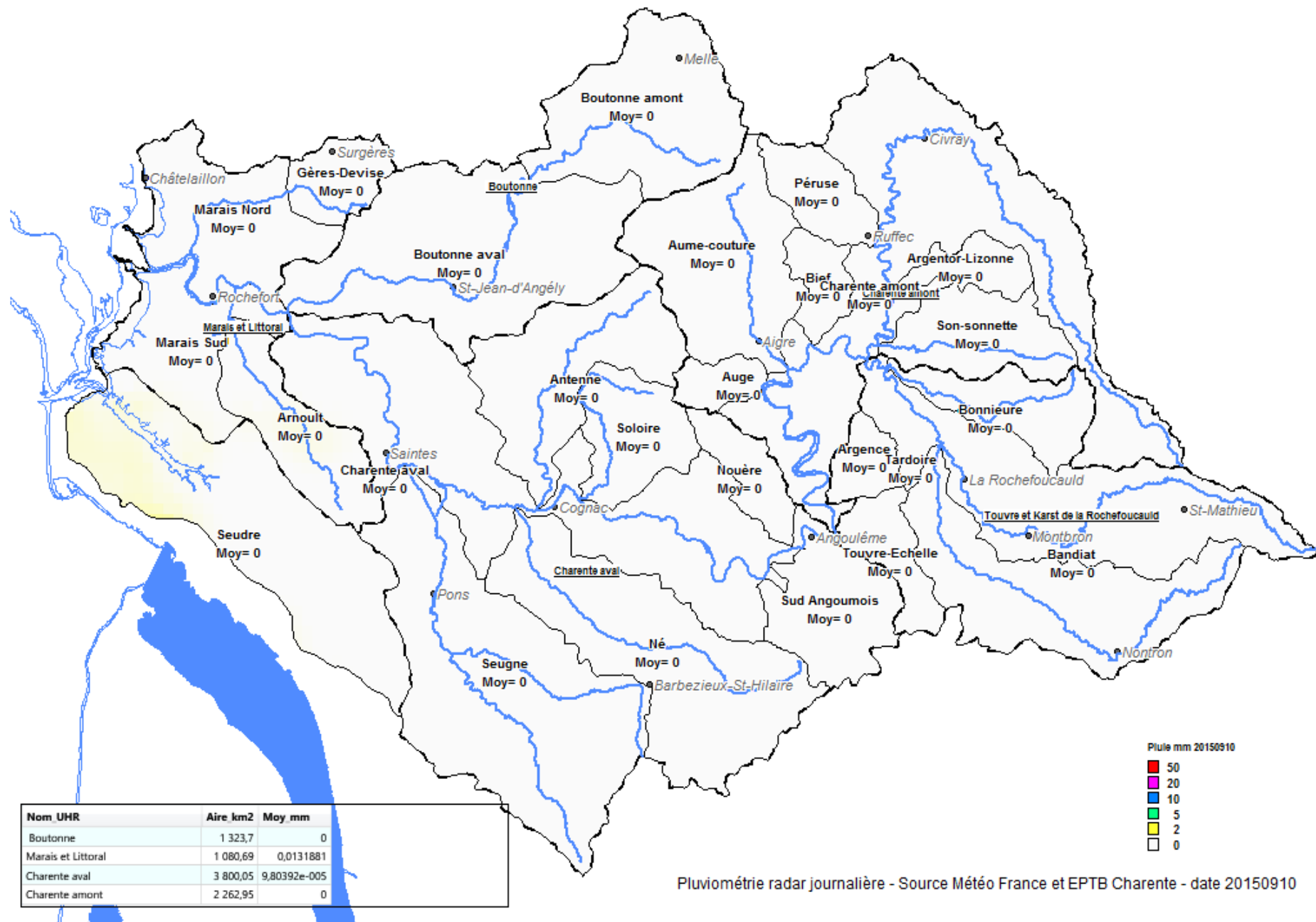


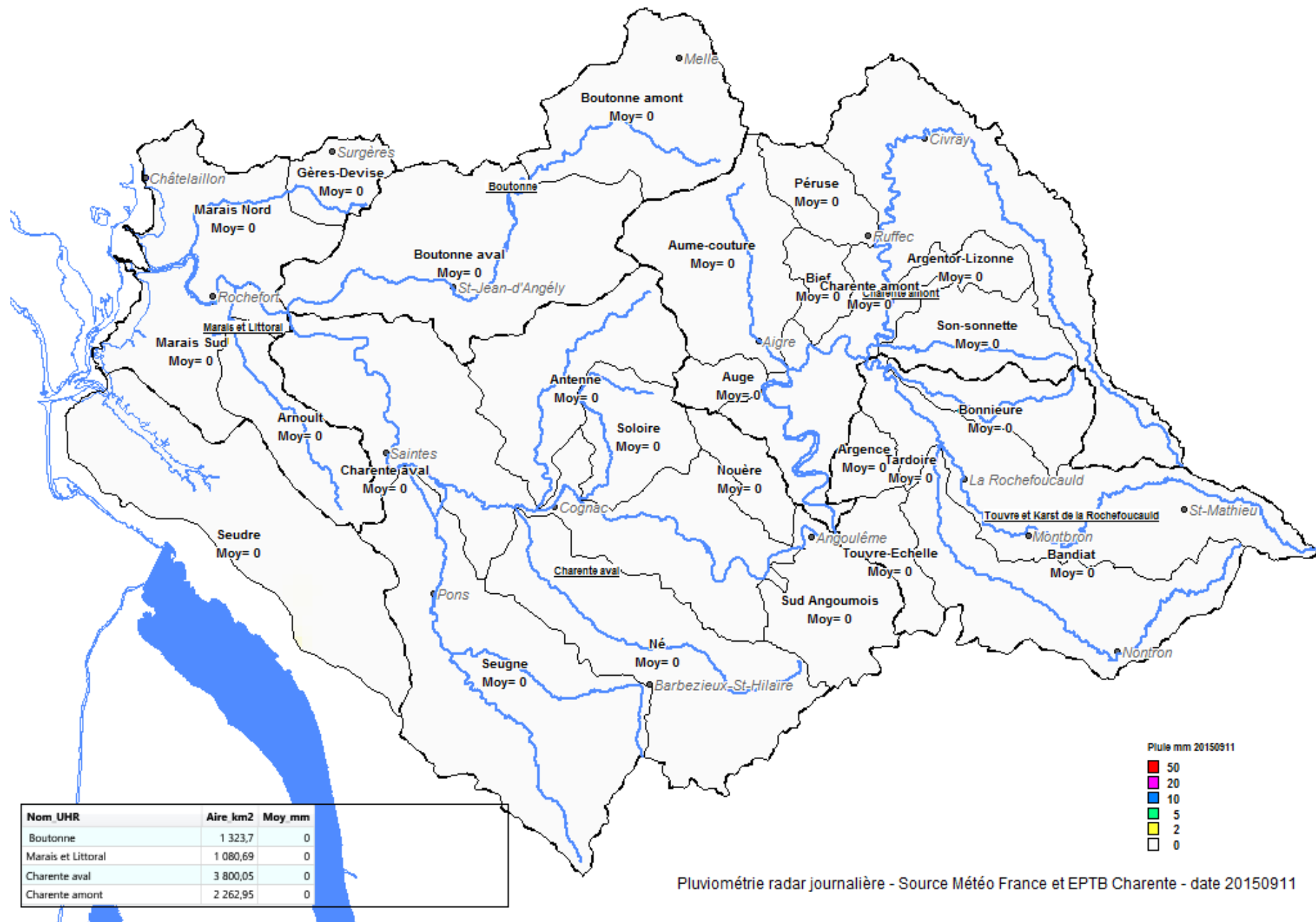


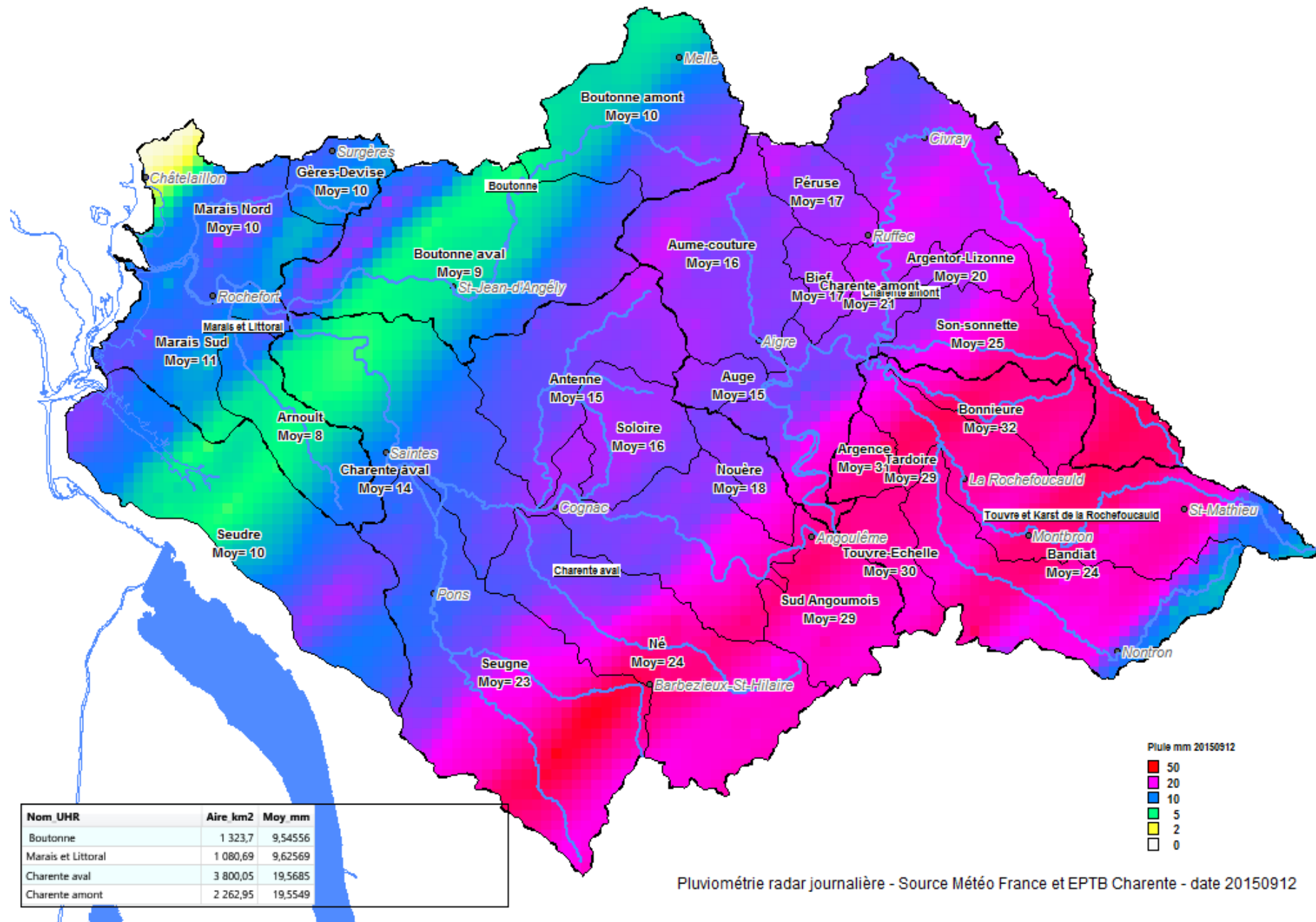


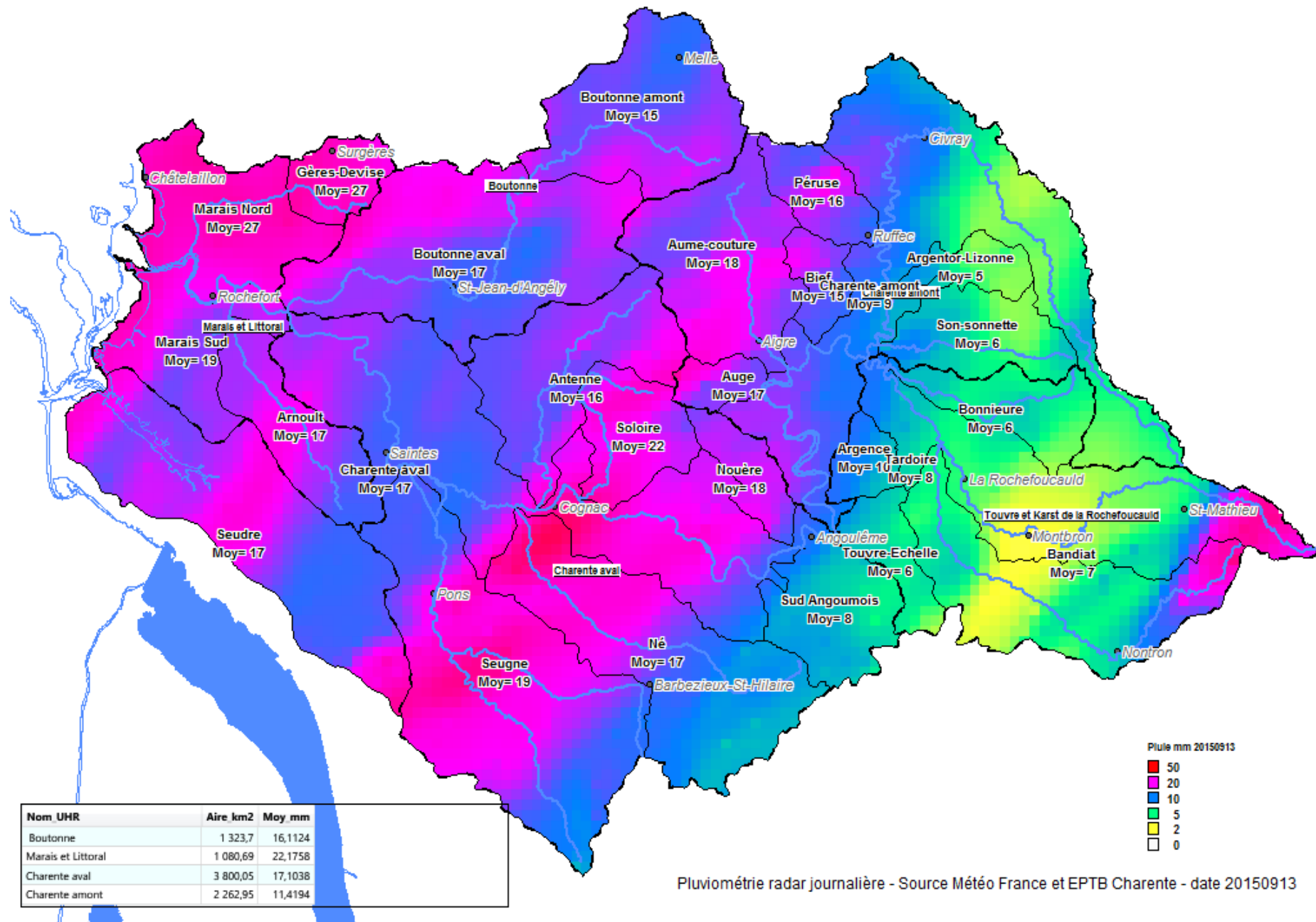


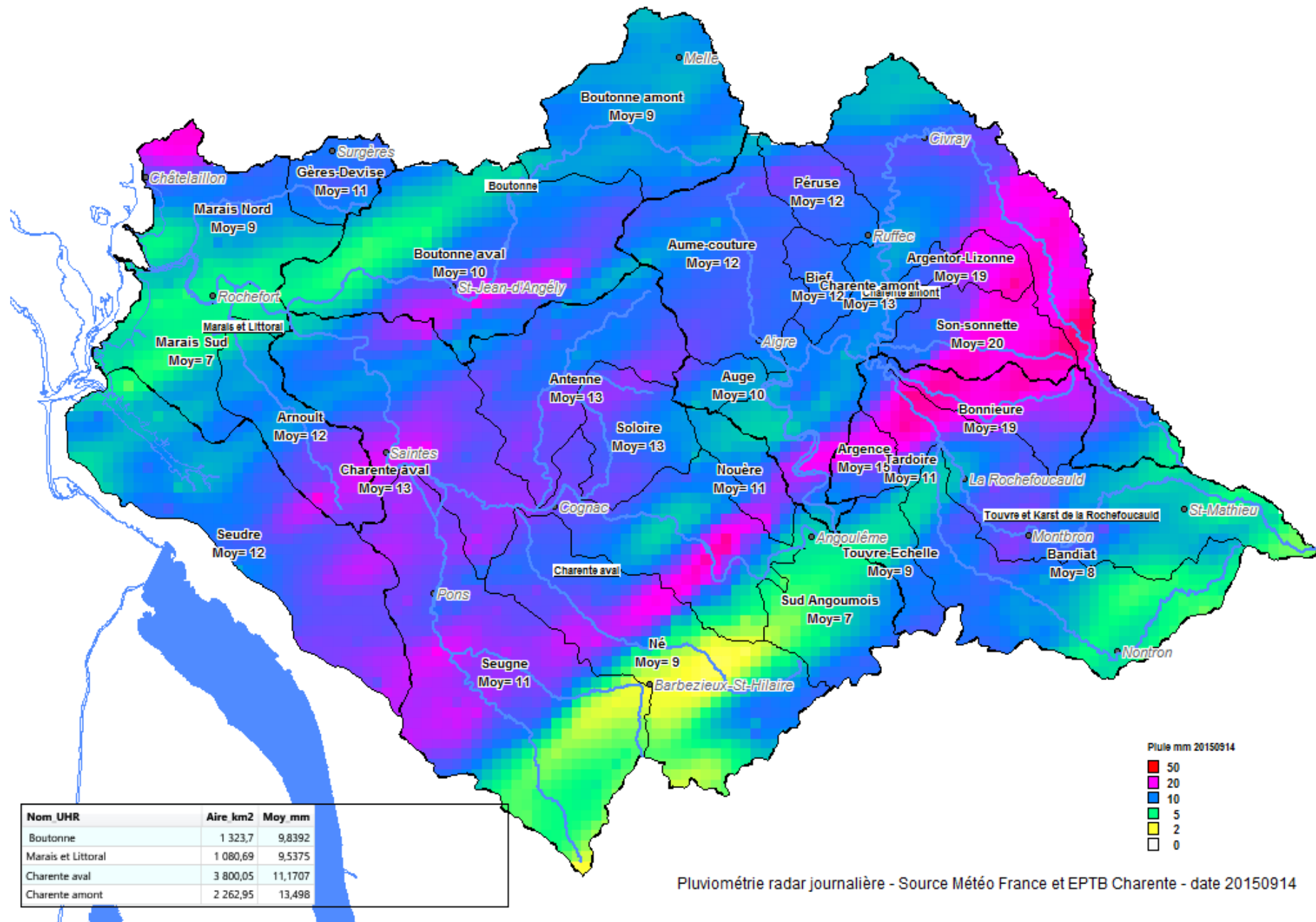


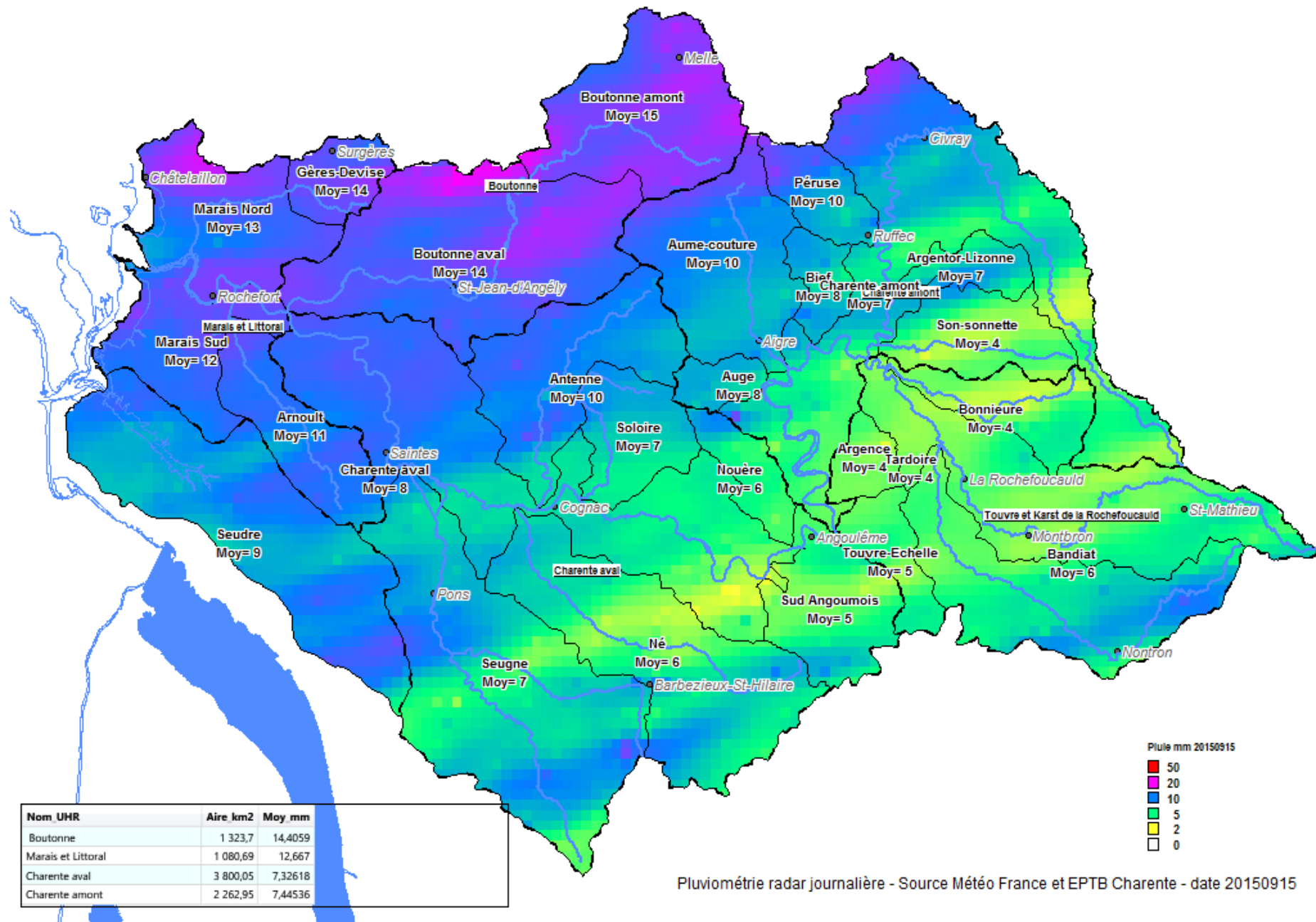


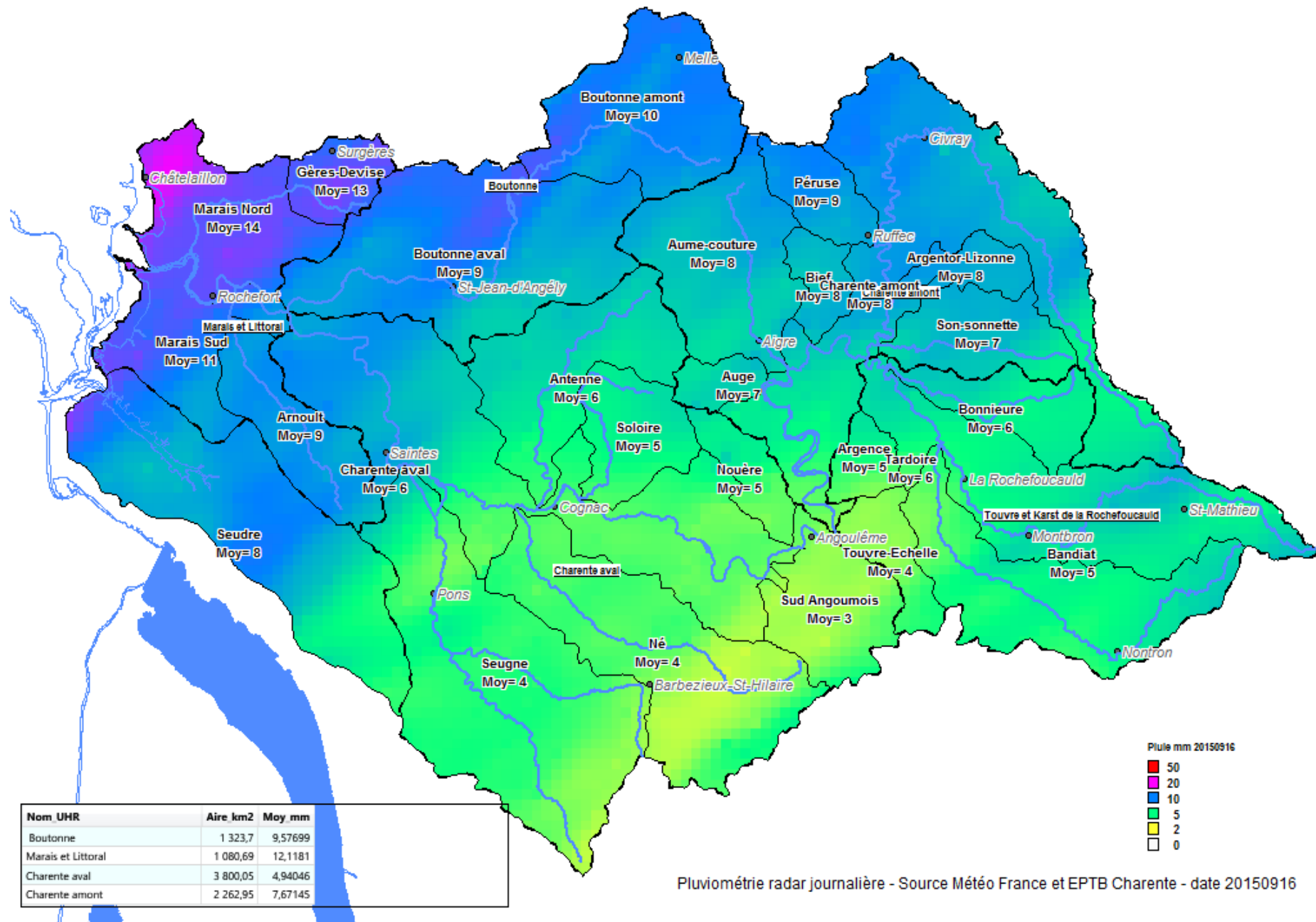


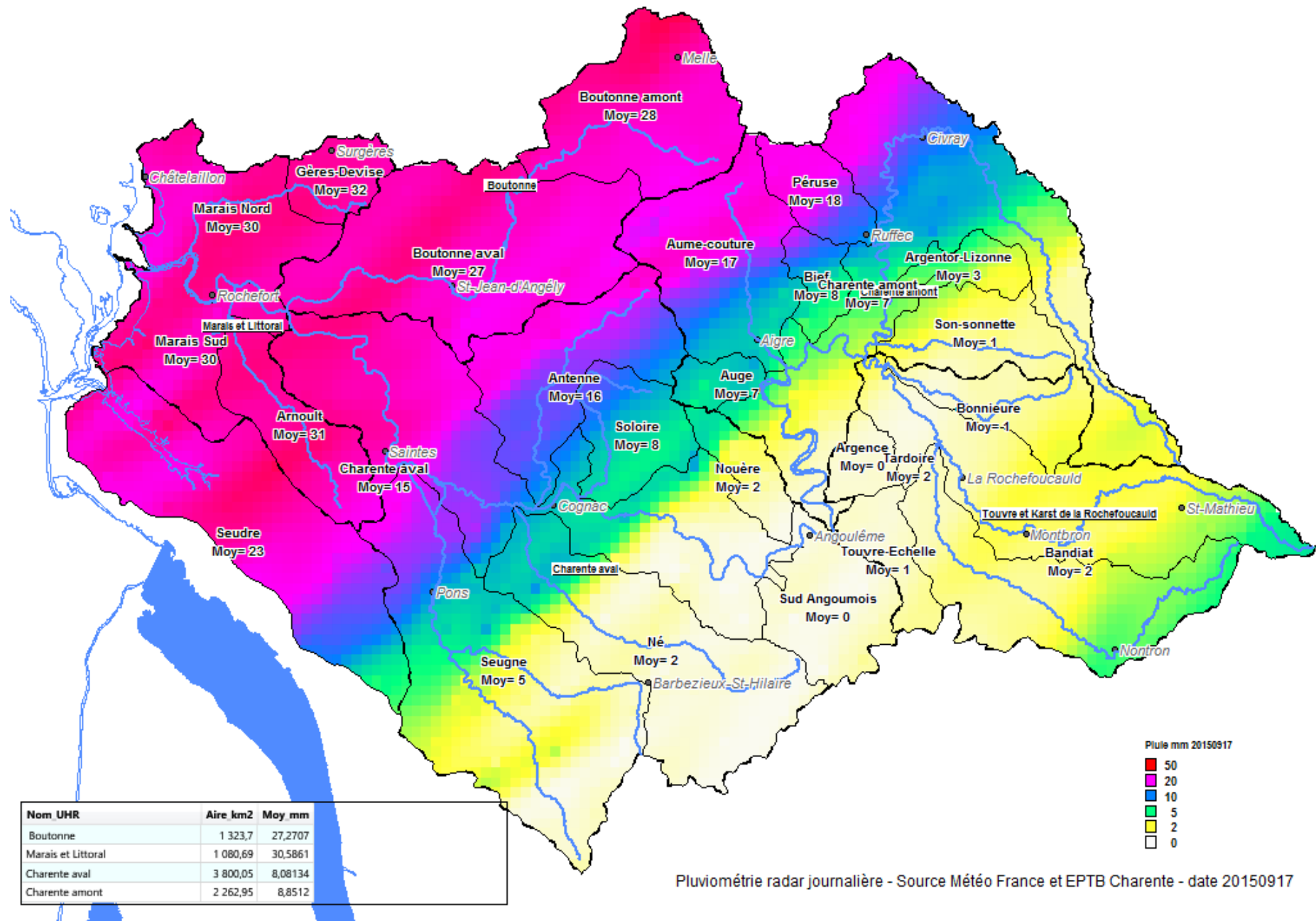






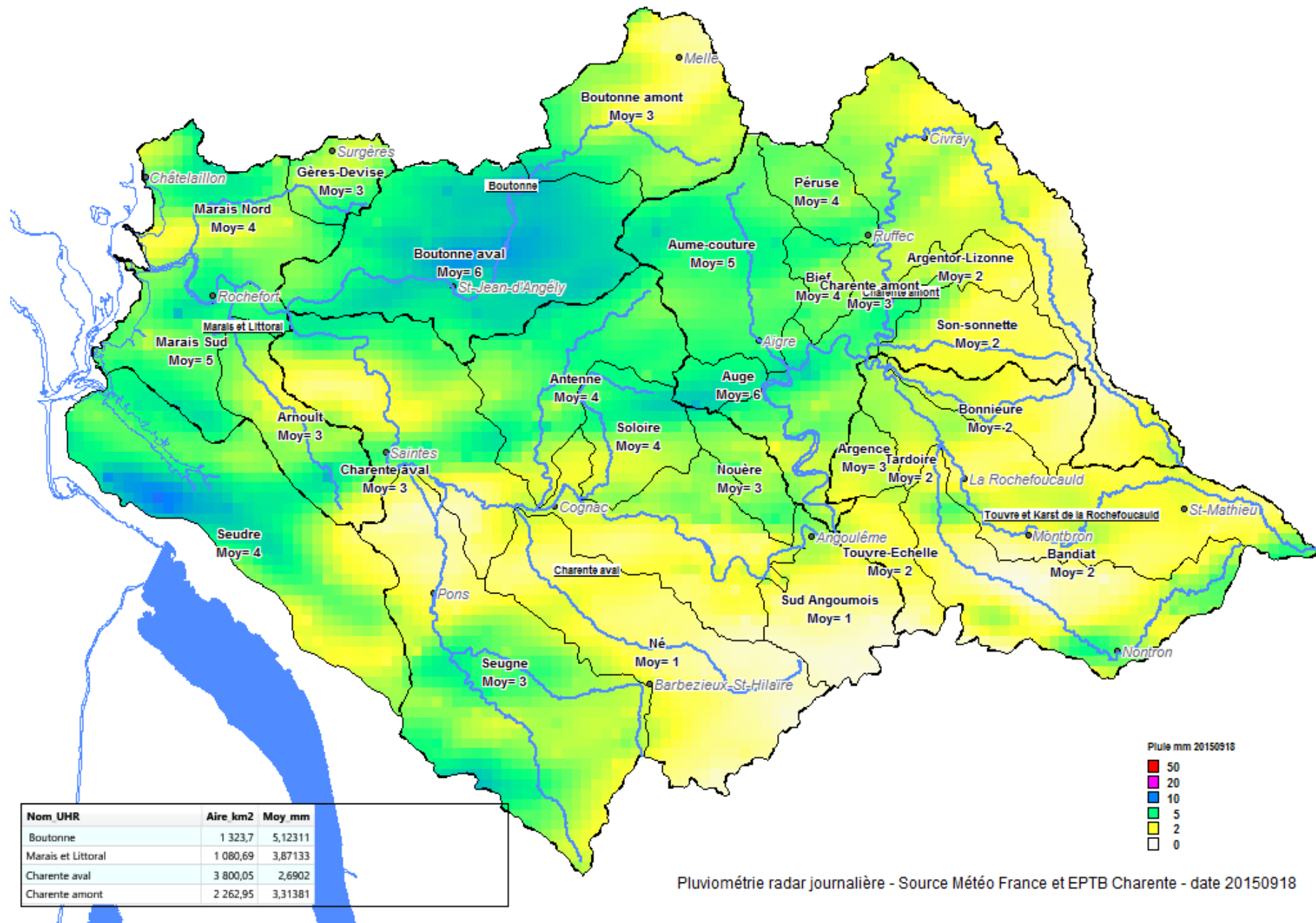


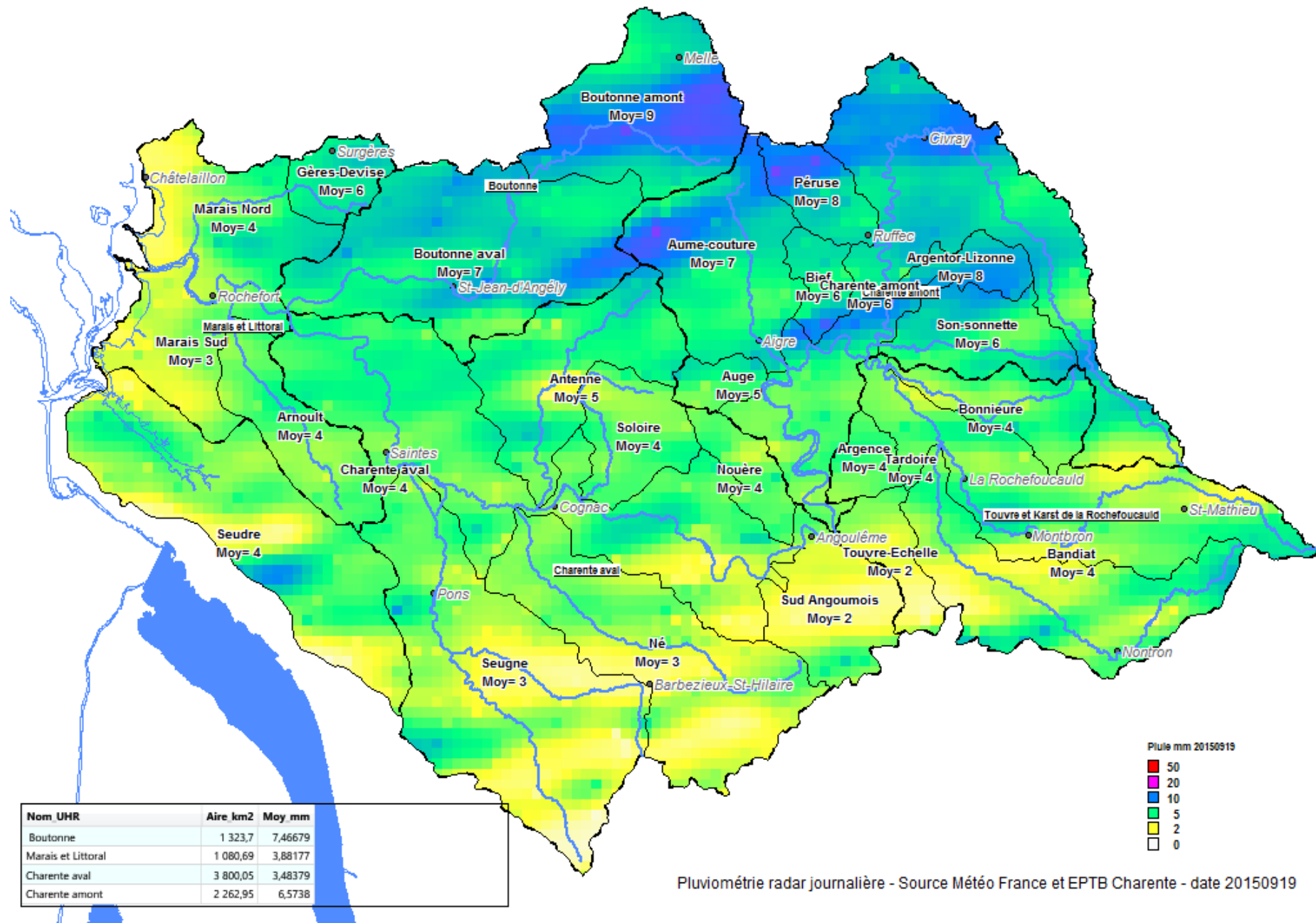


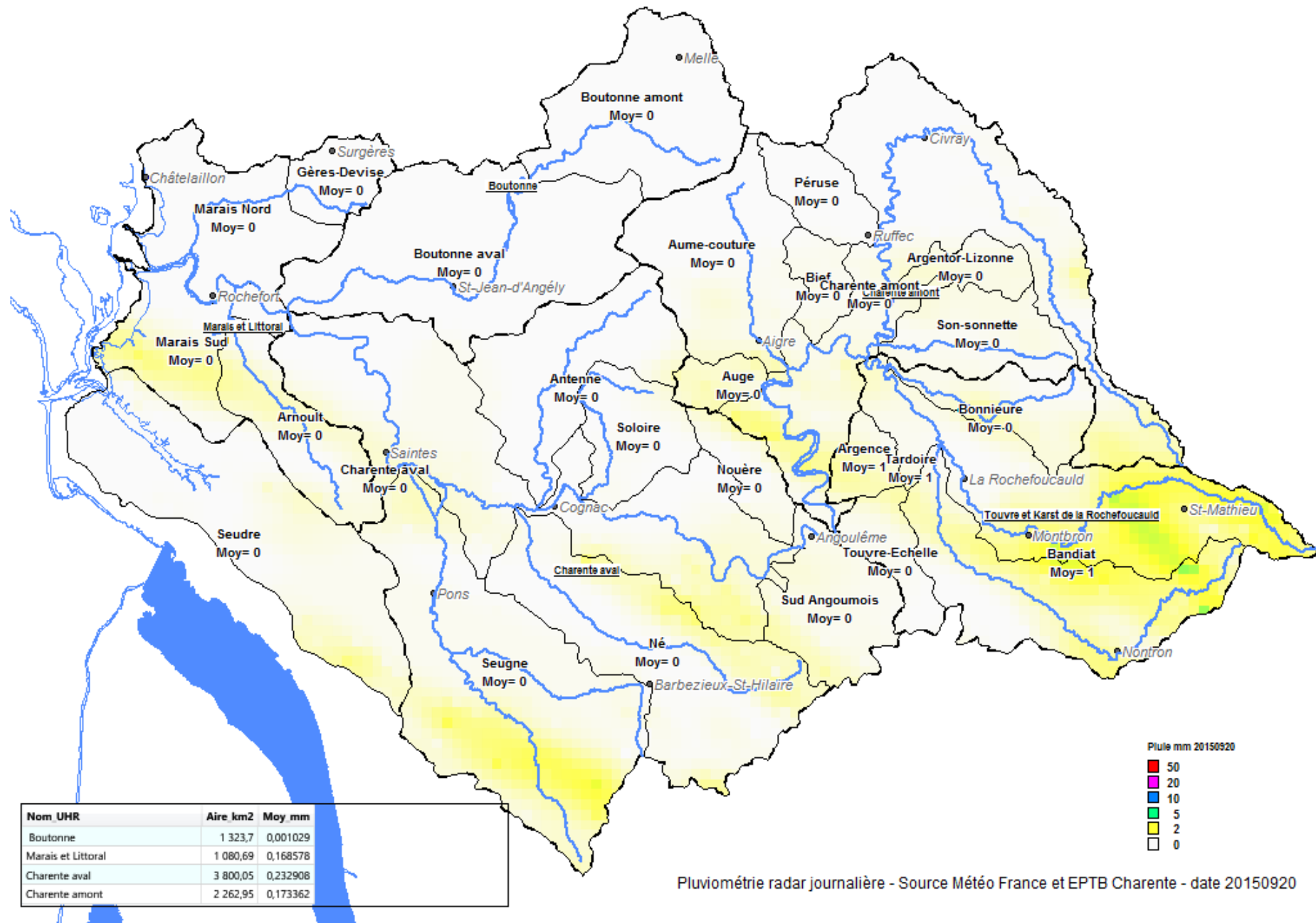


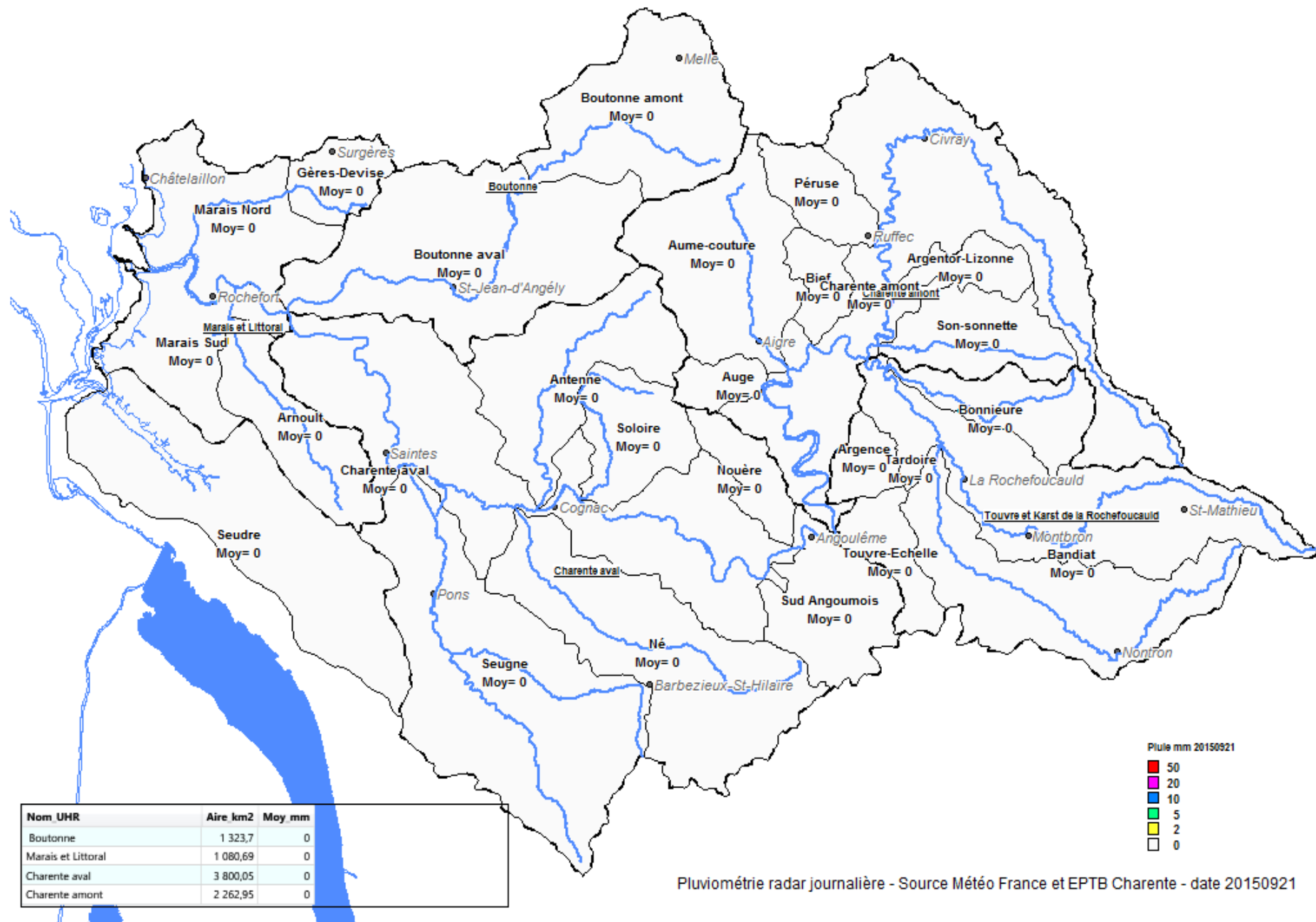
Nom_UHR	Aire km2	Moy mm
Boutonne	1 323,7	27,2707
Marais et Littoral	1 080,69	30,5861
Charente aval	3 800,05	8,08134
Charente amont	2 262,95	8,8512

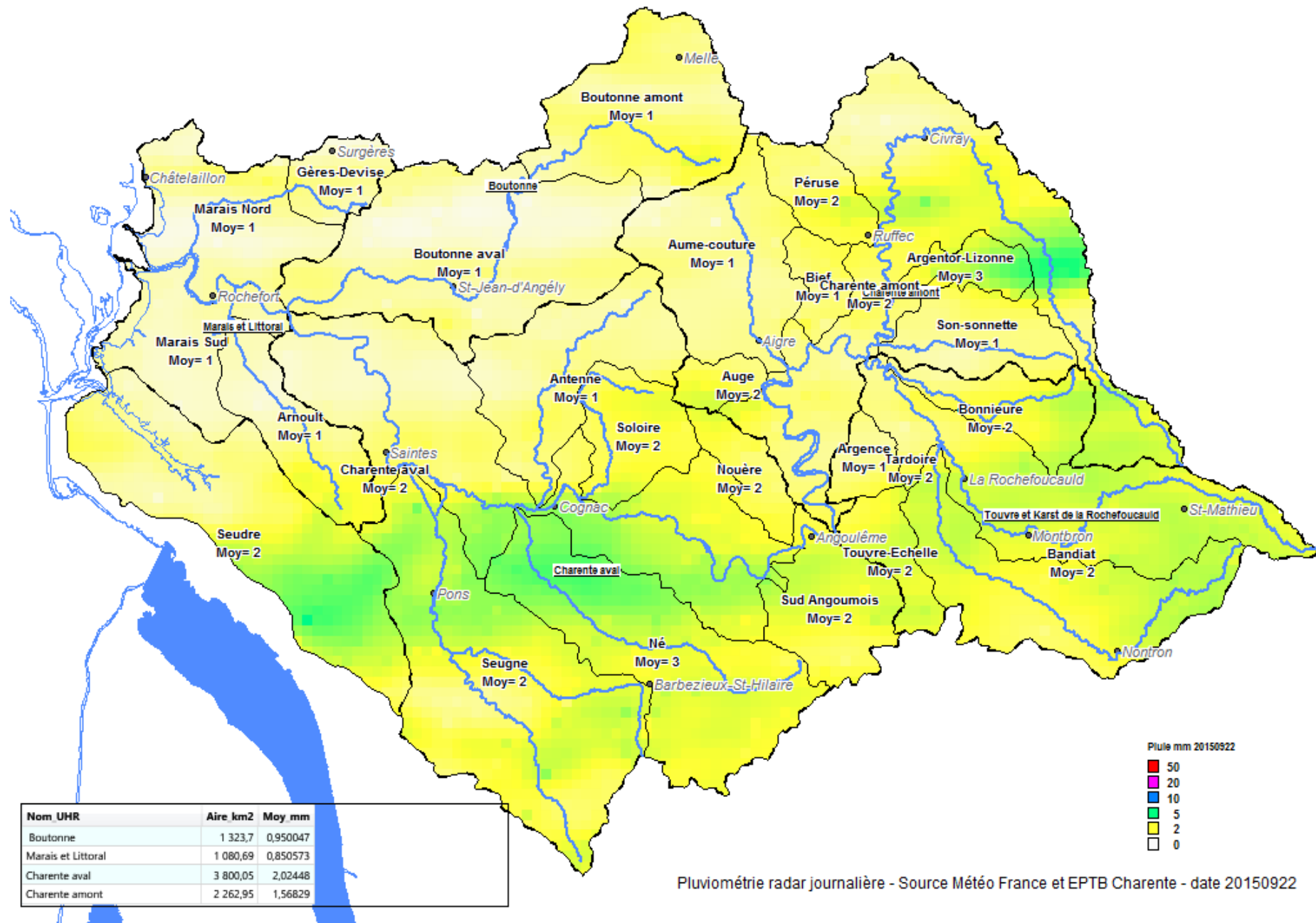
Pluimétrie radar journalière - Source Météo France et EPTB Charente - date 20150917

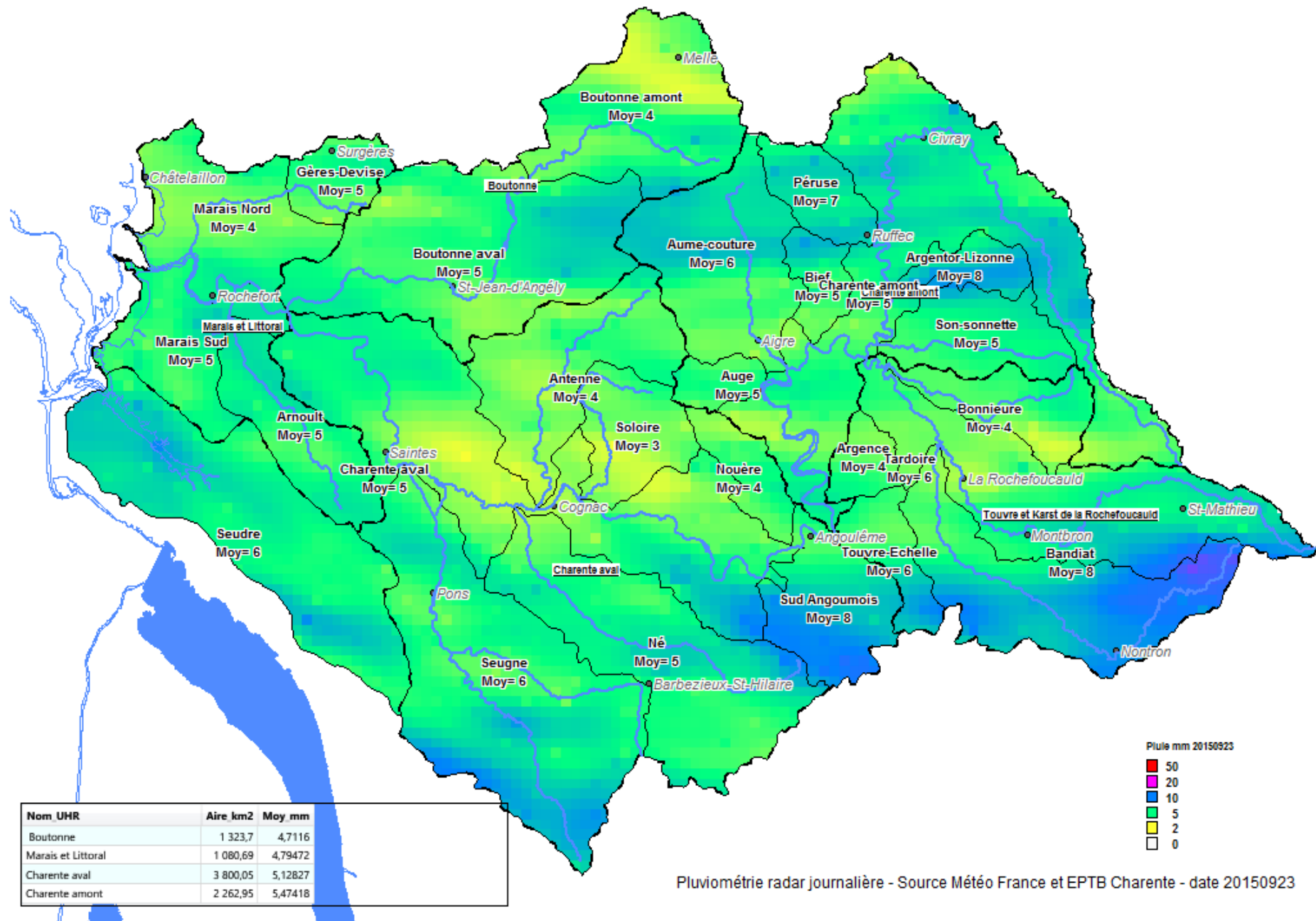












Pluimétrie radar journalière - Source Météo France et EPTB Charente - date 20150923

