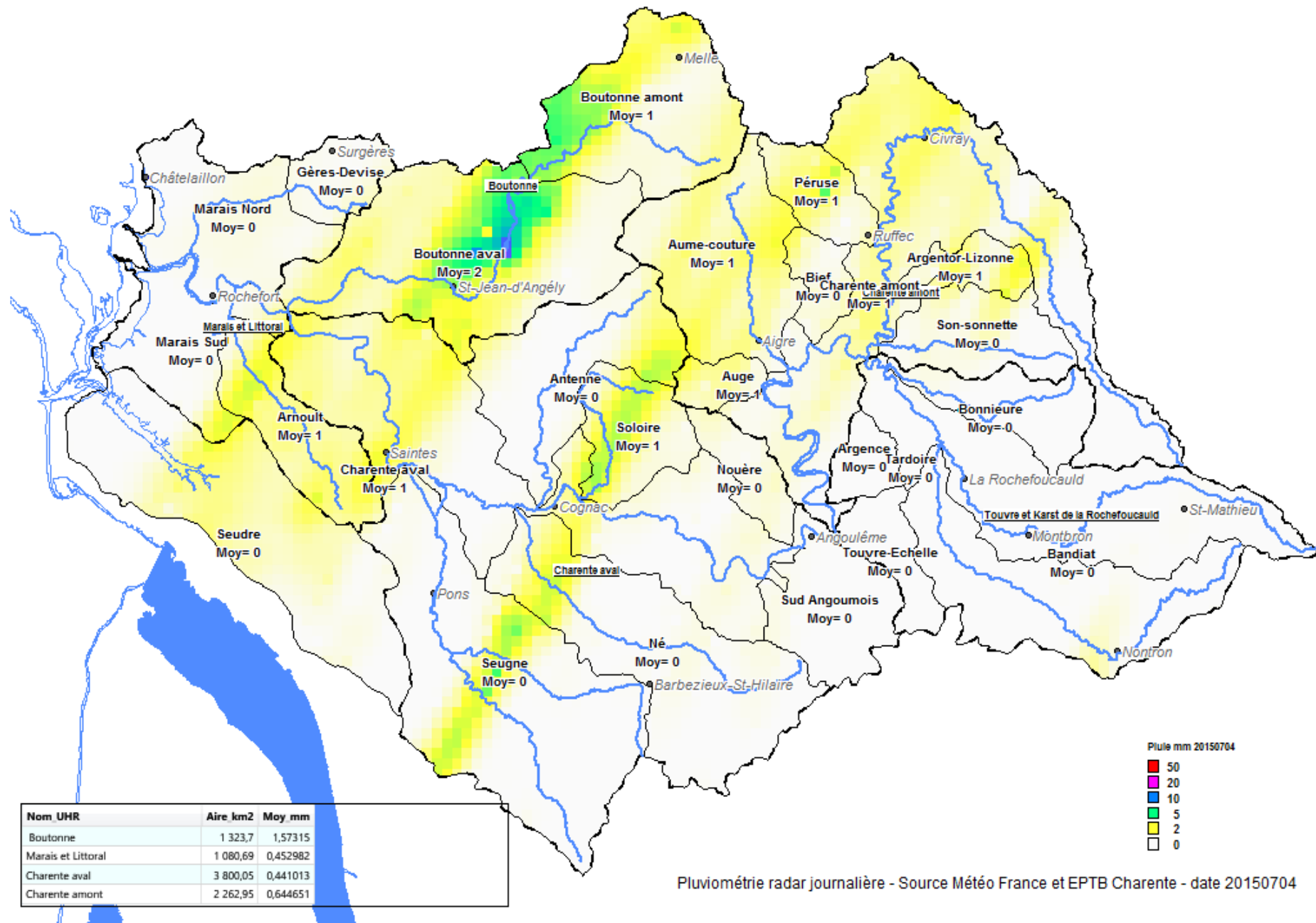
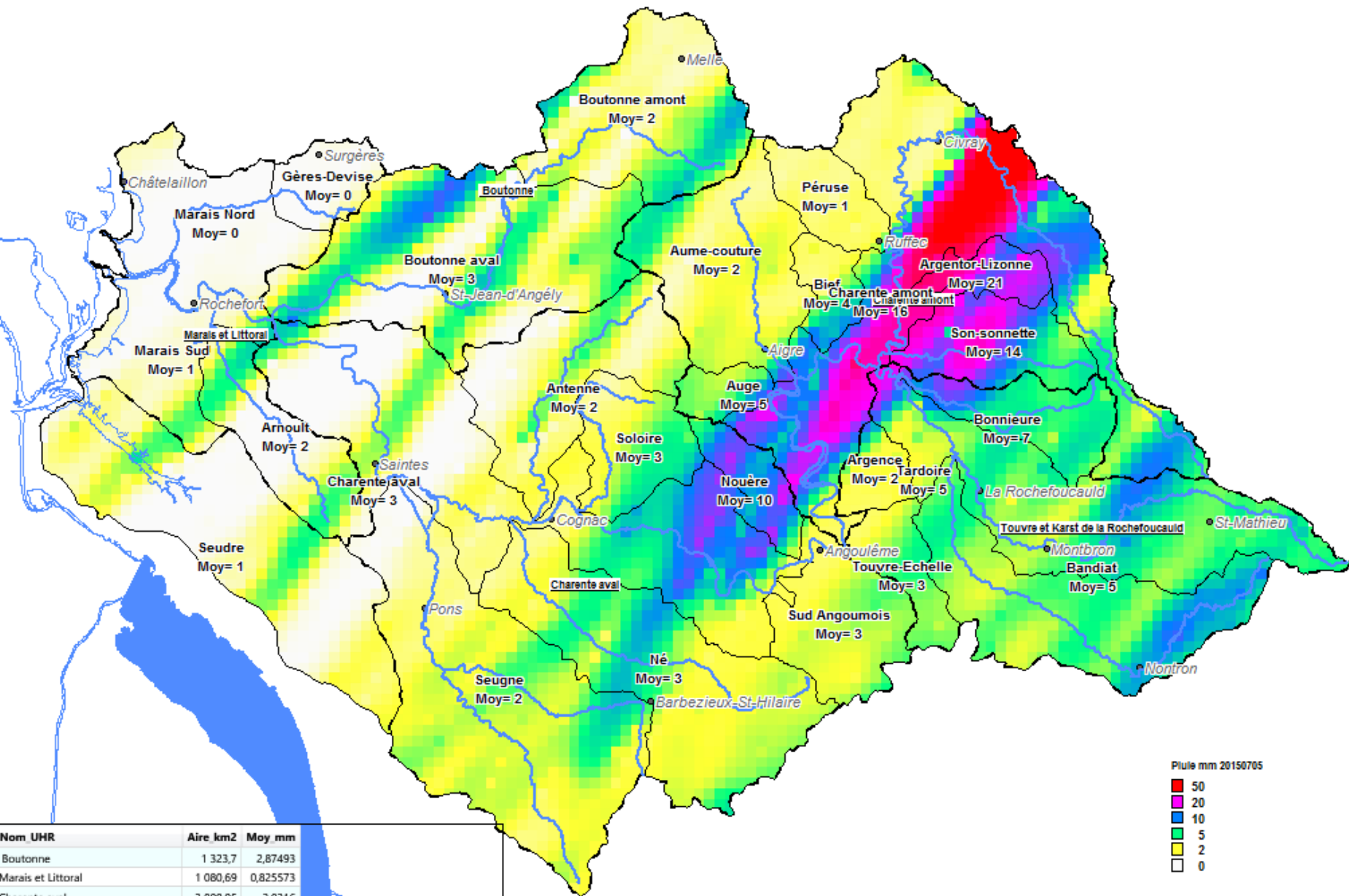
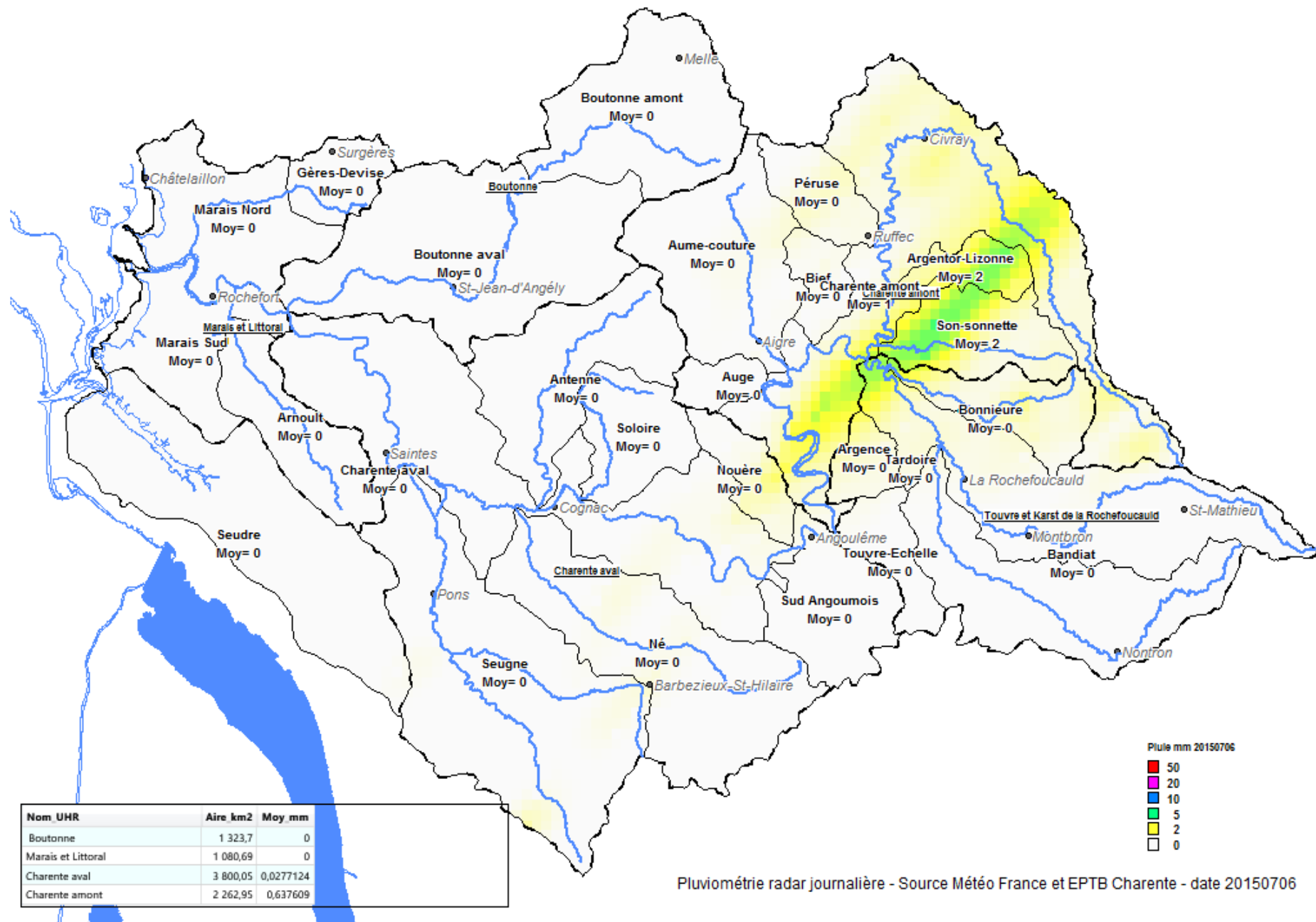


Pluimétrie radar journalière - Source Météo France et EPTB Charente - date 20150703

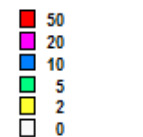


Pluimétrie radar journalière - Source Météo France et EPTB Charente - date 20150704

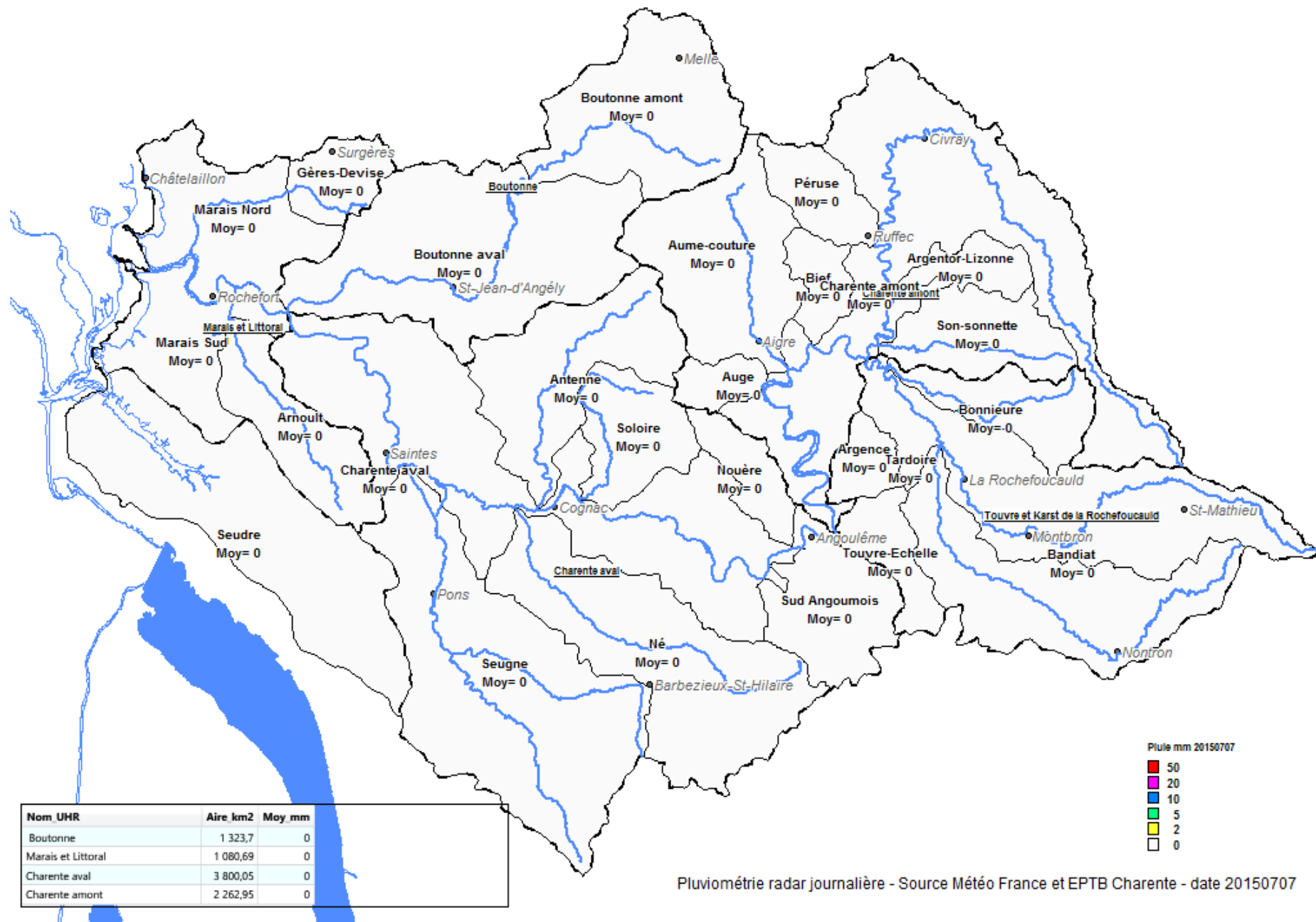


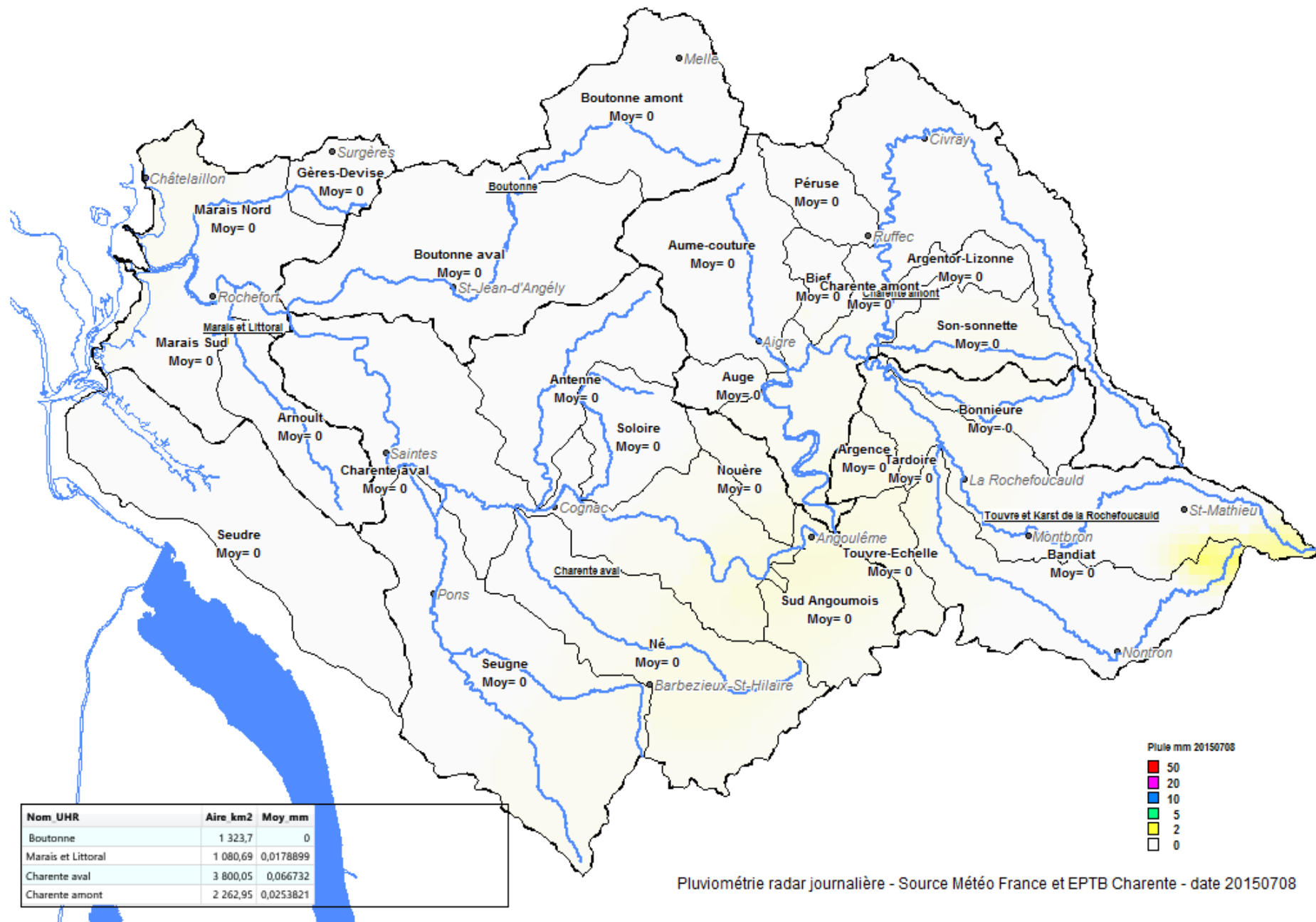


Pluie mm 20150706



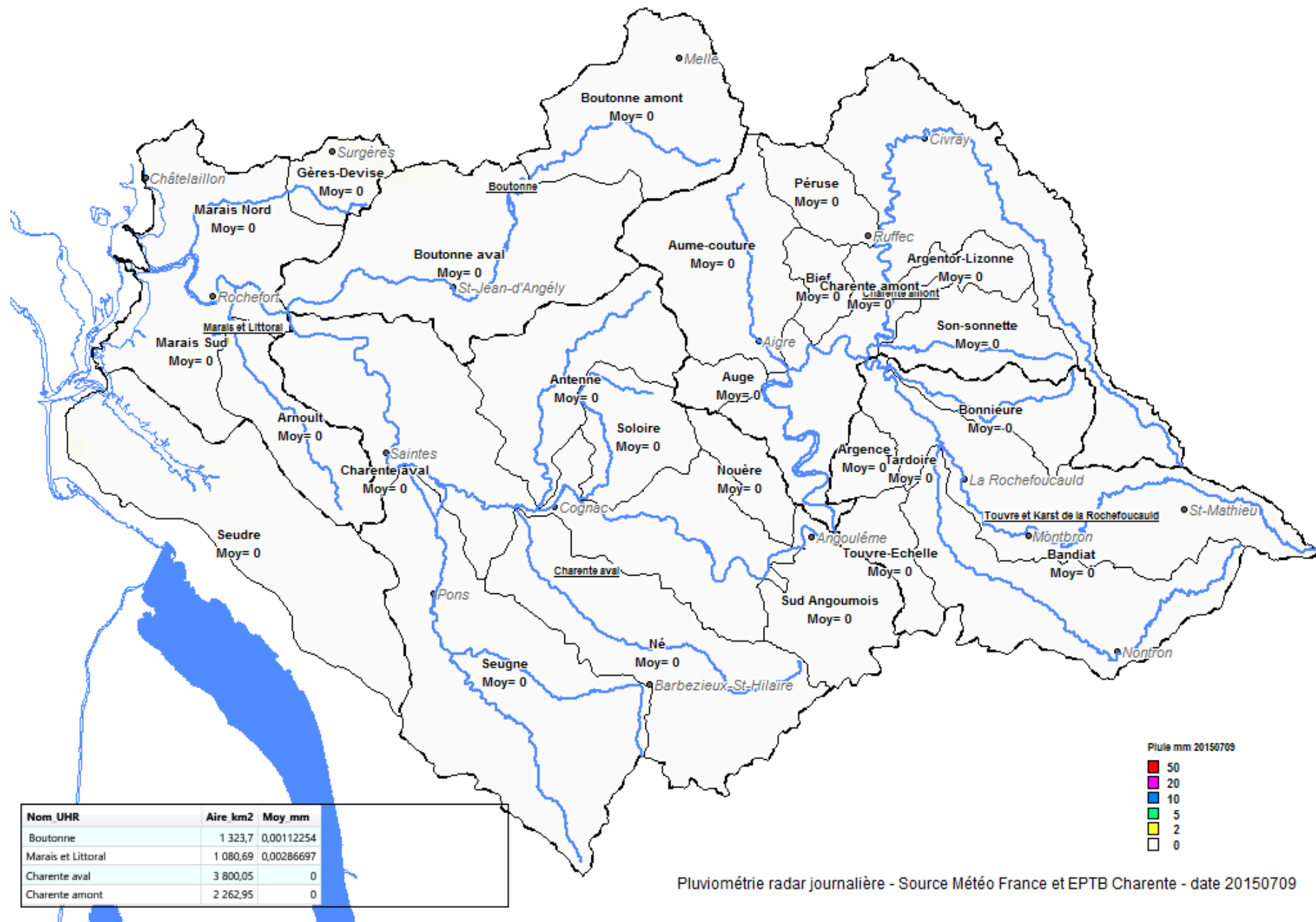
Pluimétrie radar journalière - Source Météo France et EPTB Charente - date 20150706

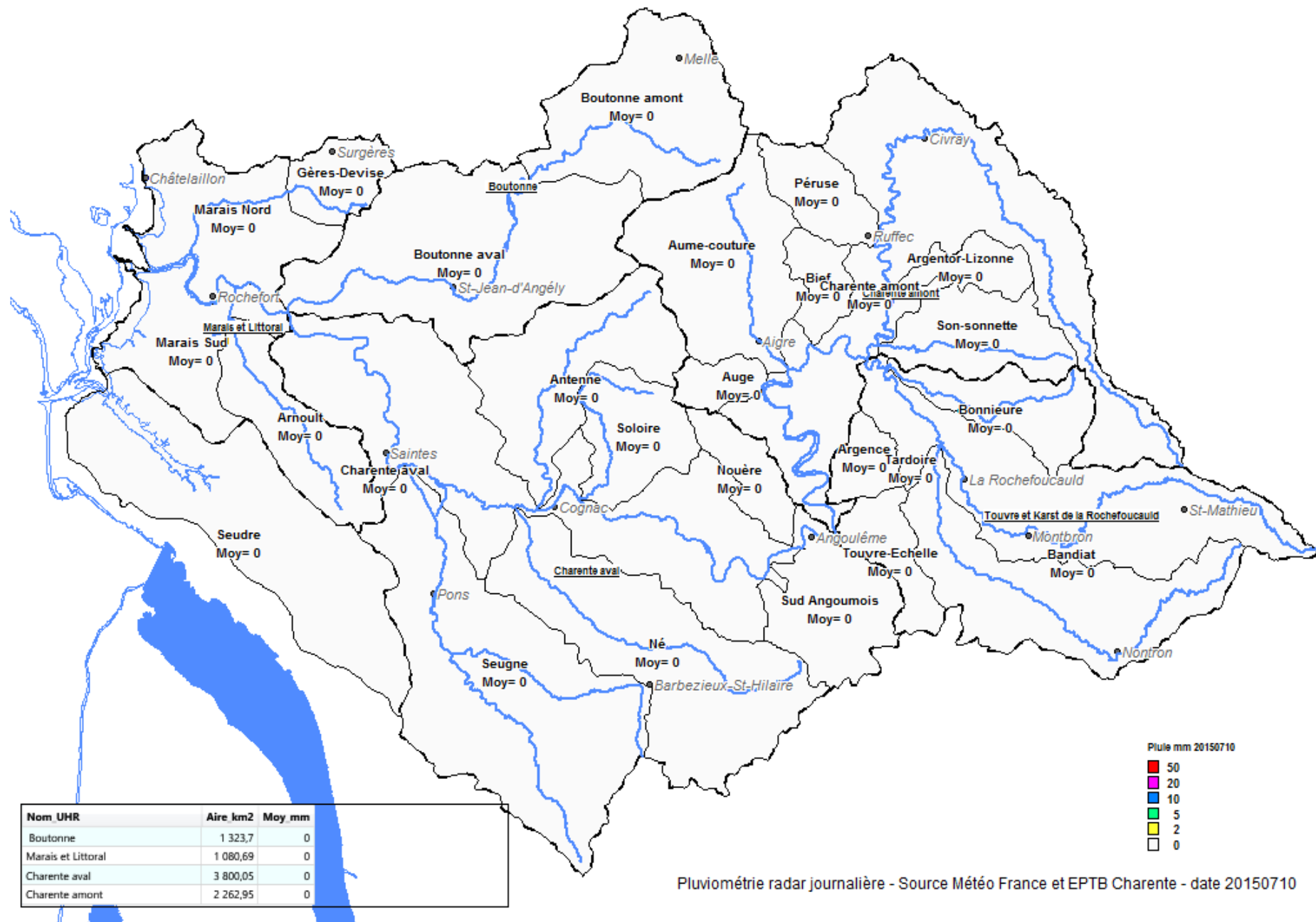


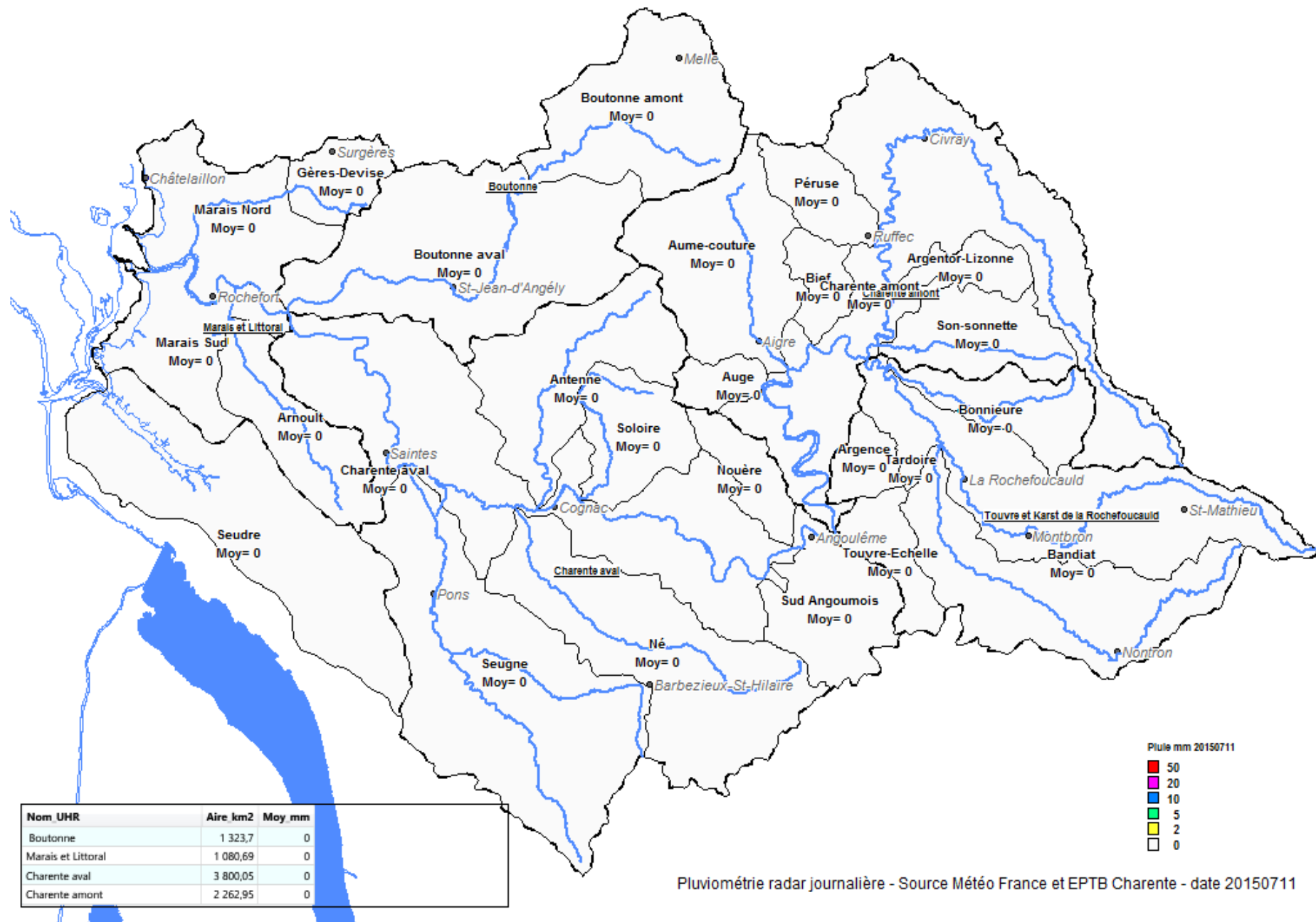


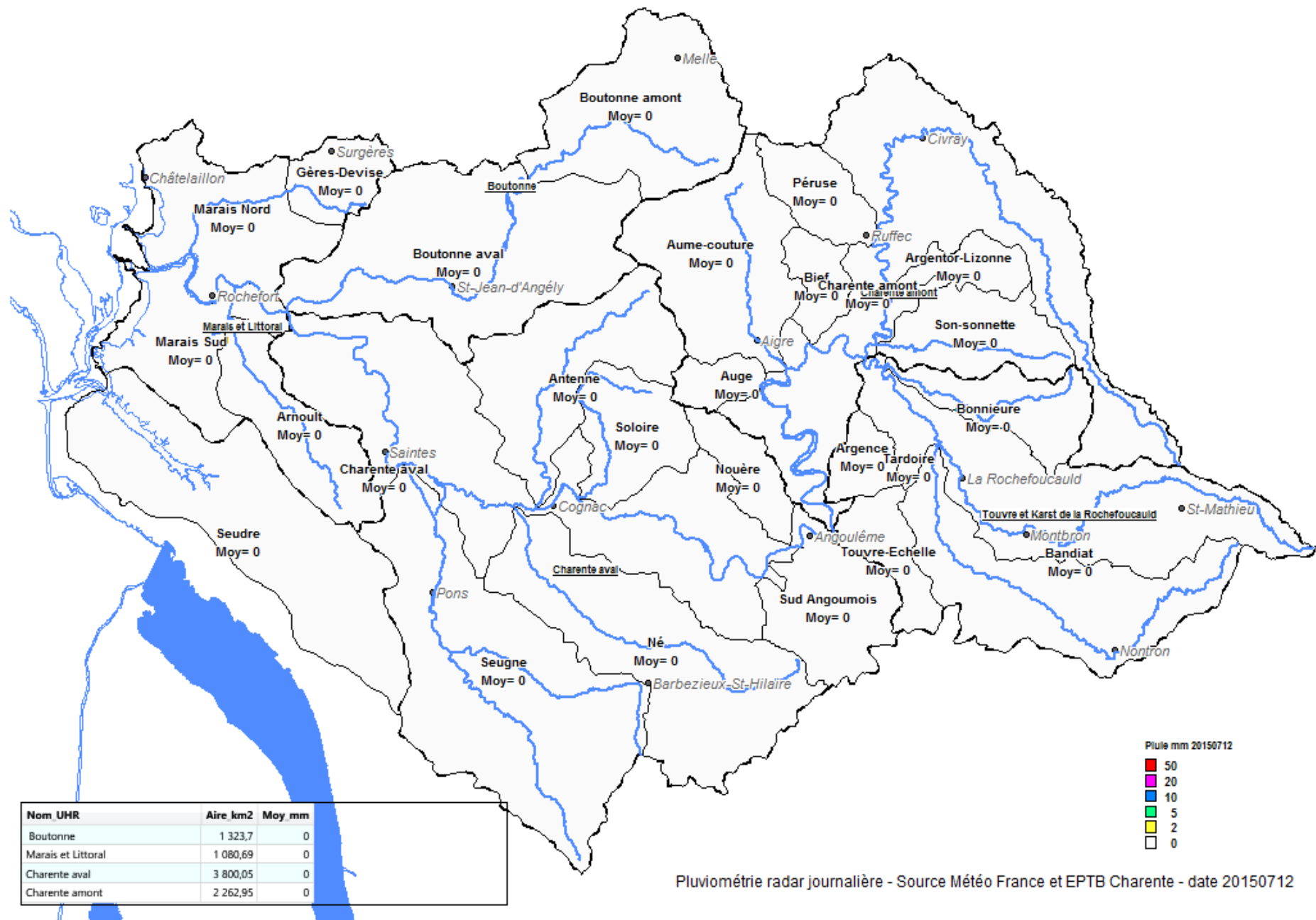
Pluviométrie radar journalière - Source Météo France et EPTB Charente - date 20150708

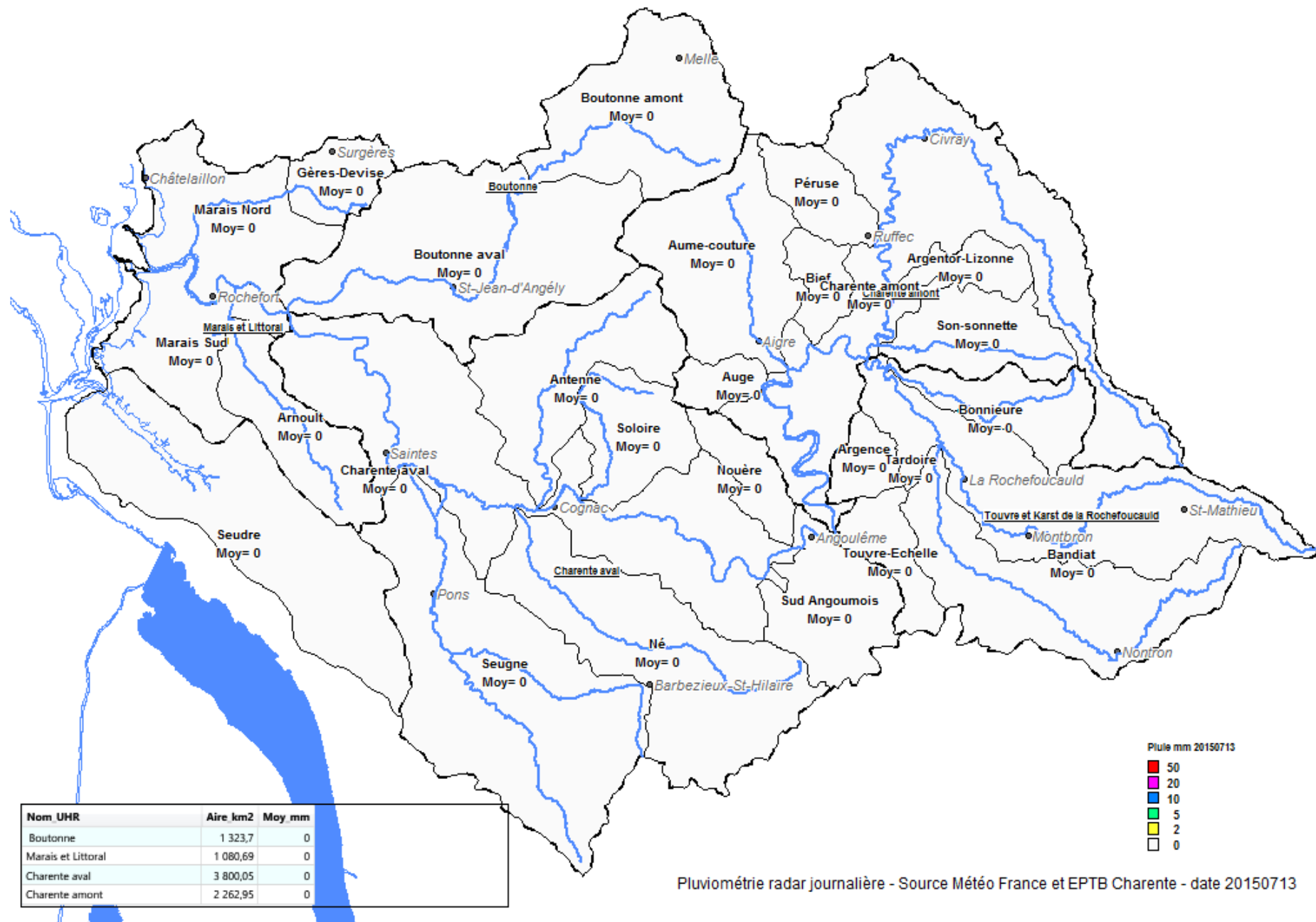


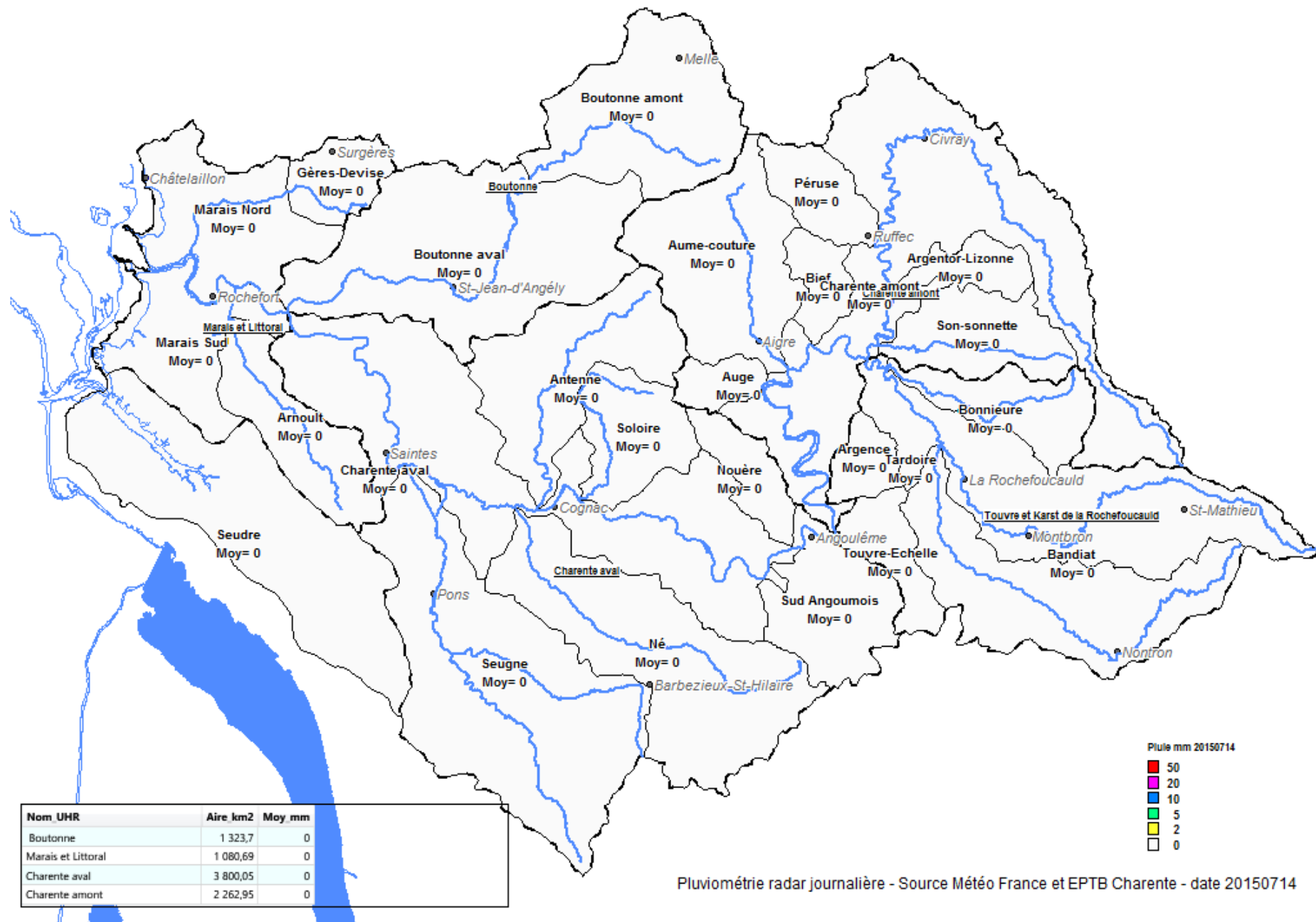


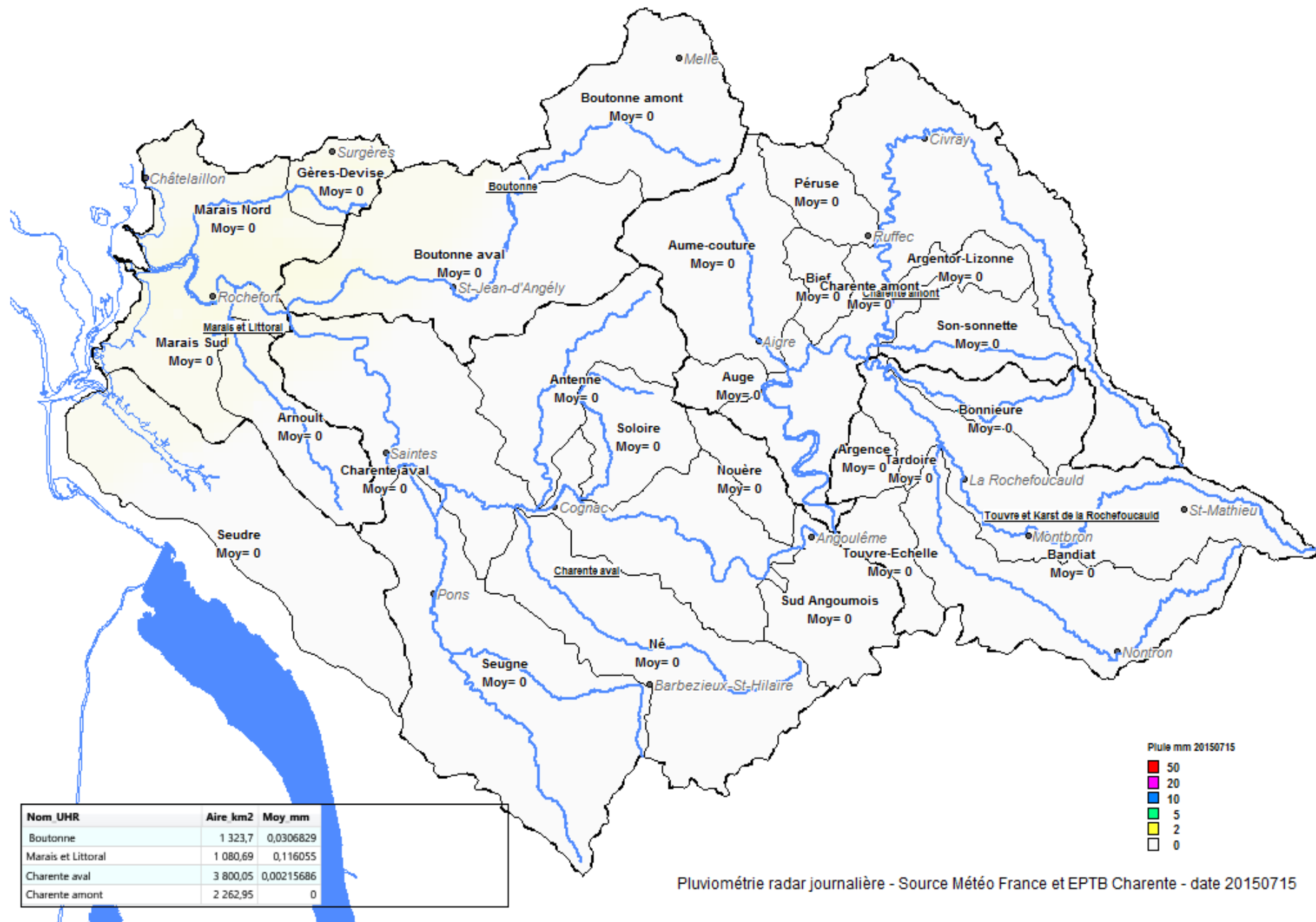


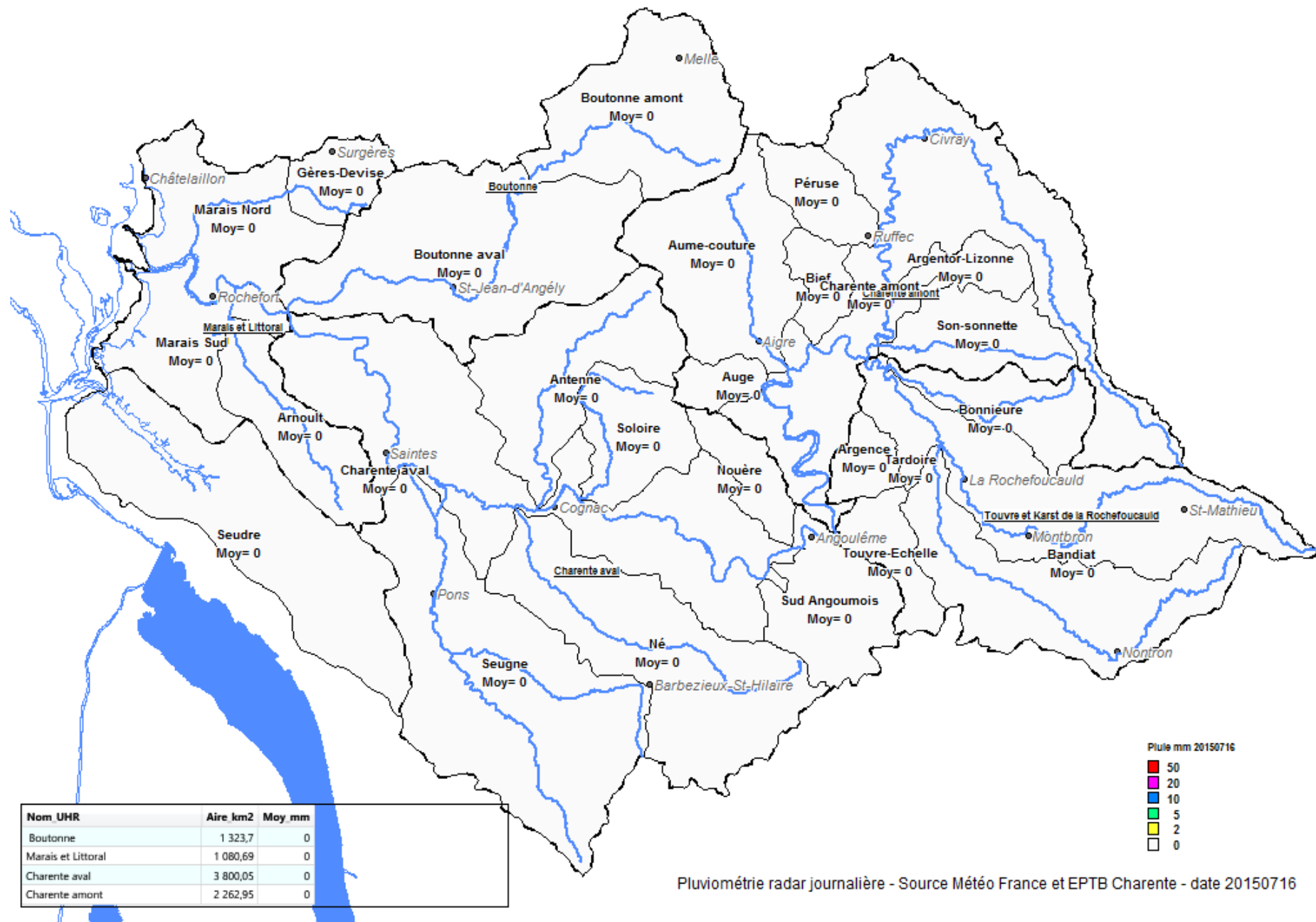




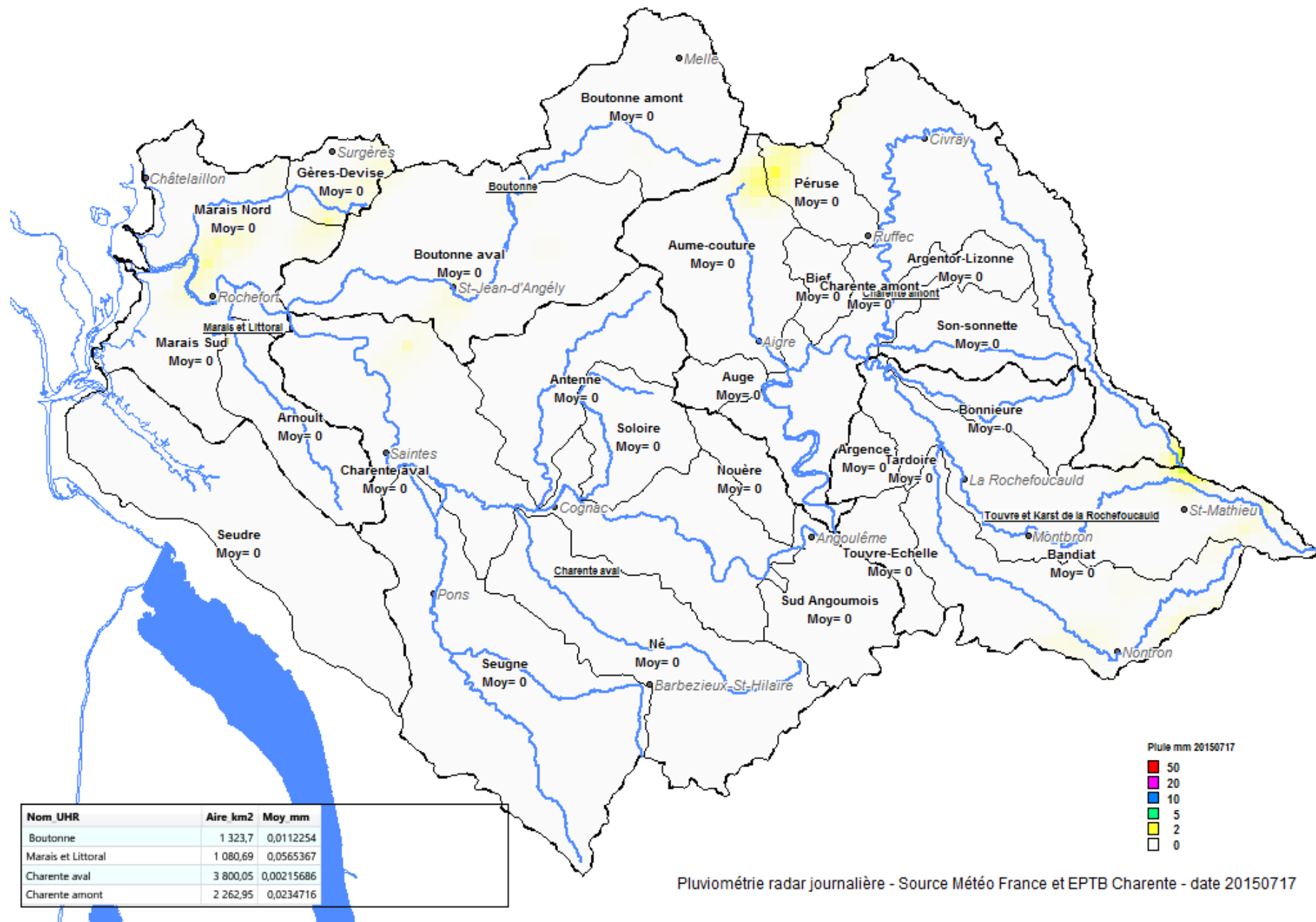


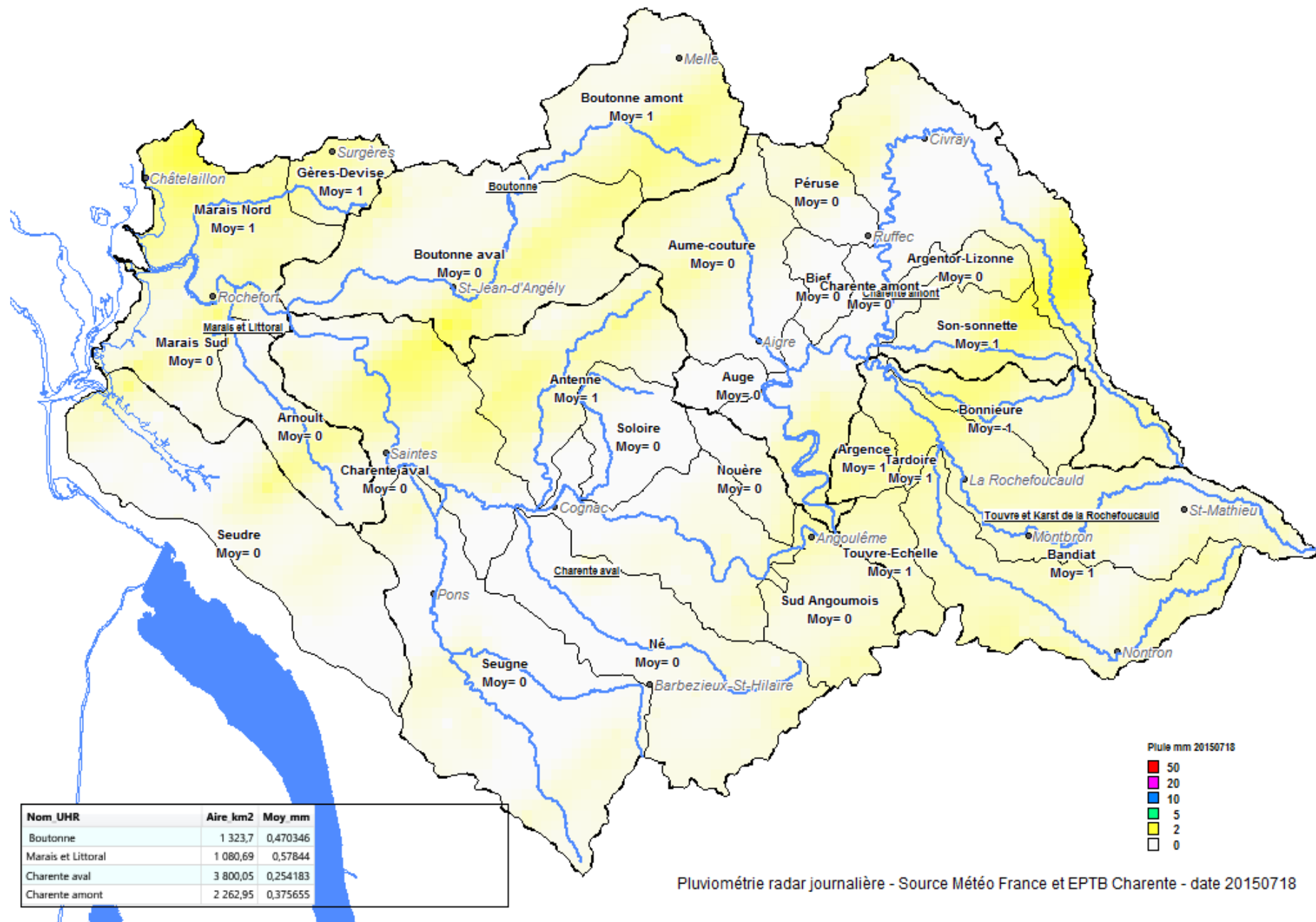


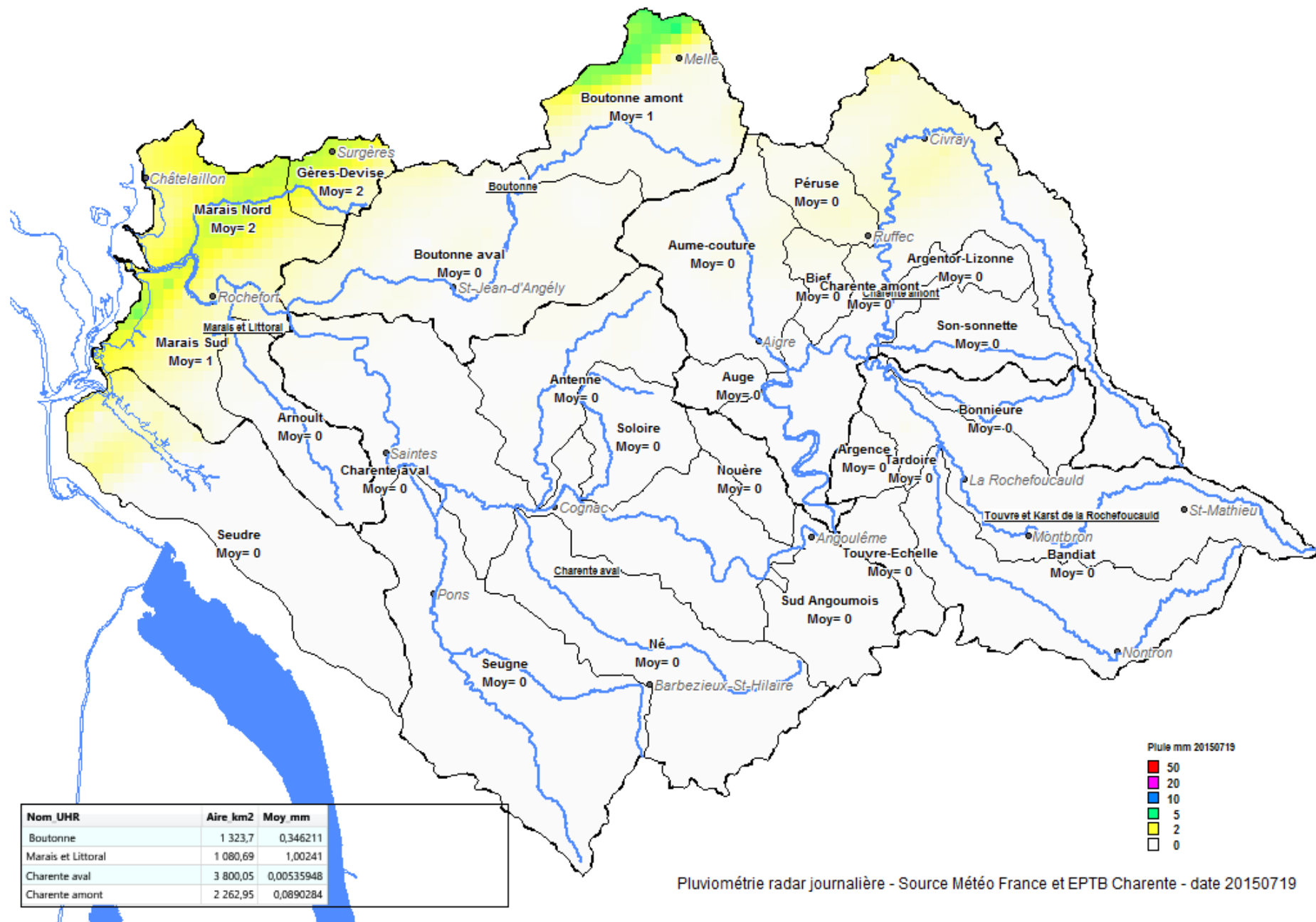


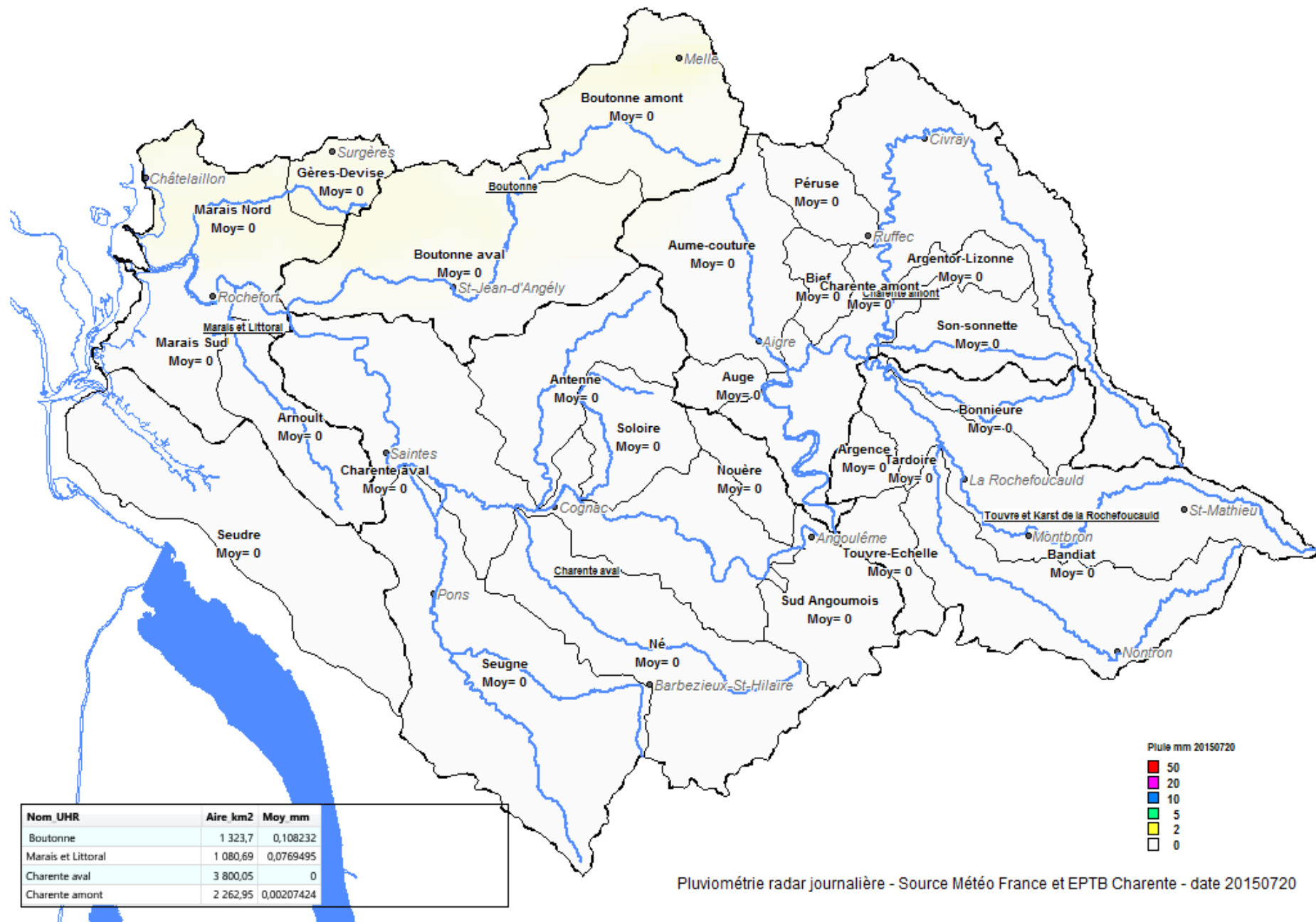


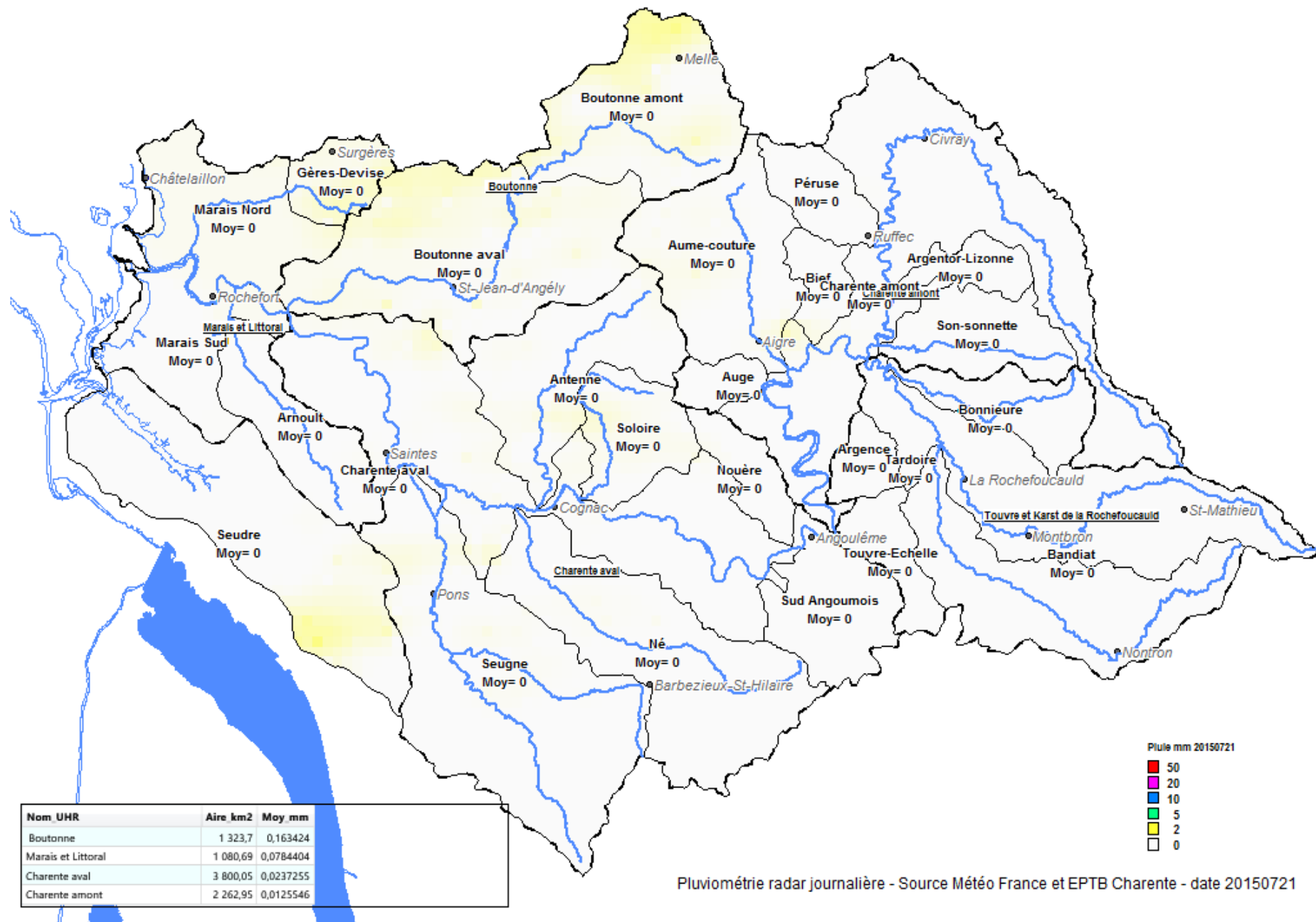


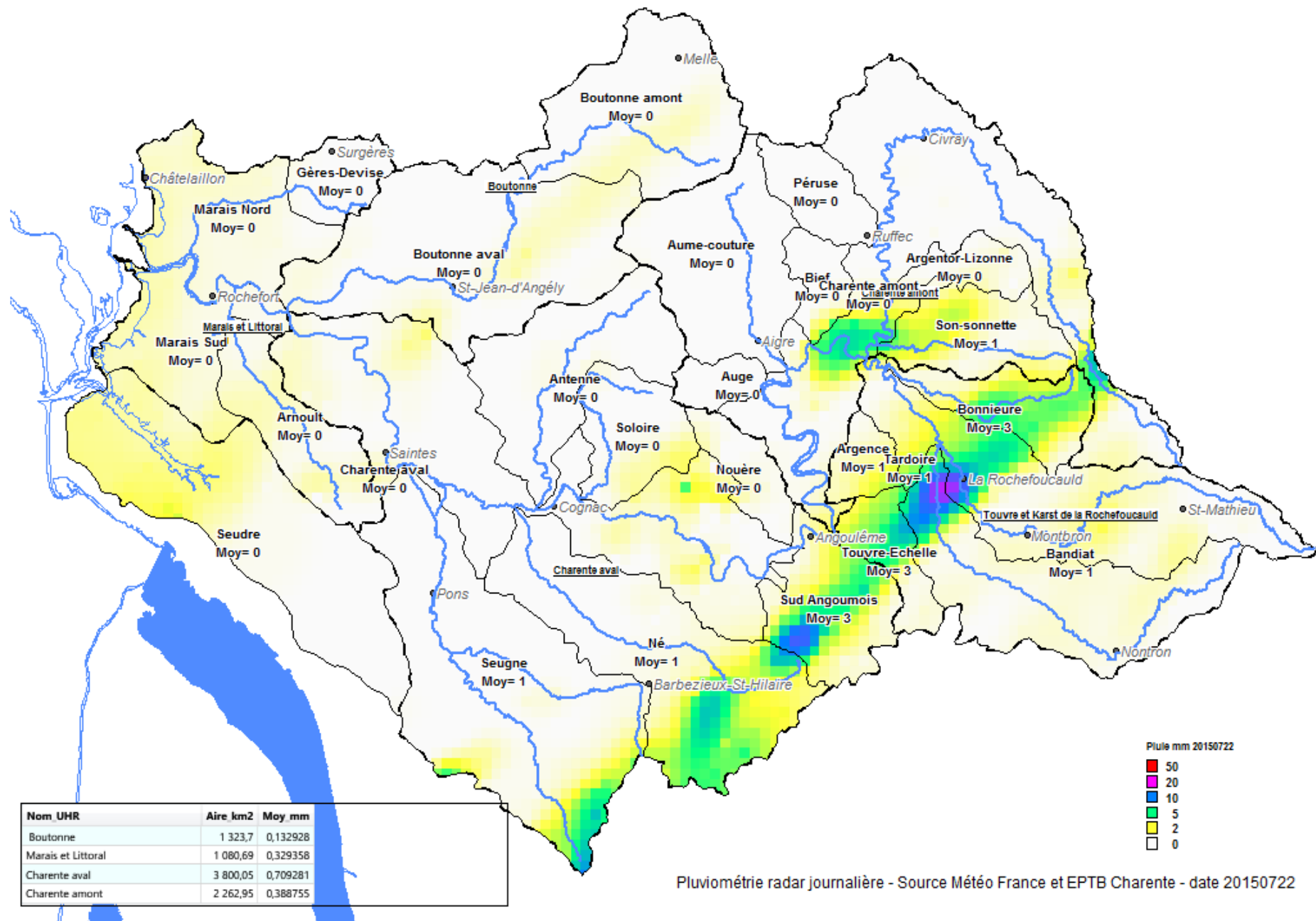




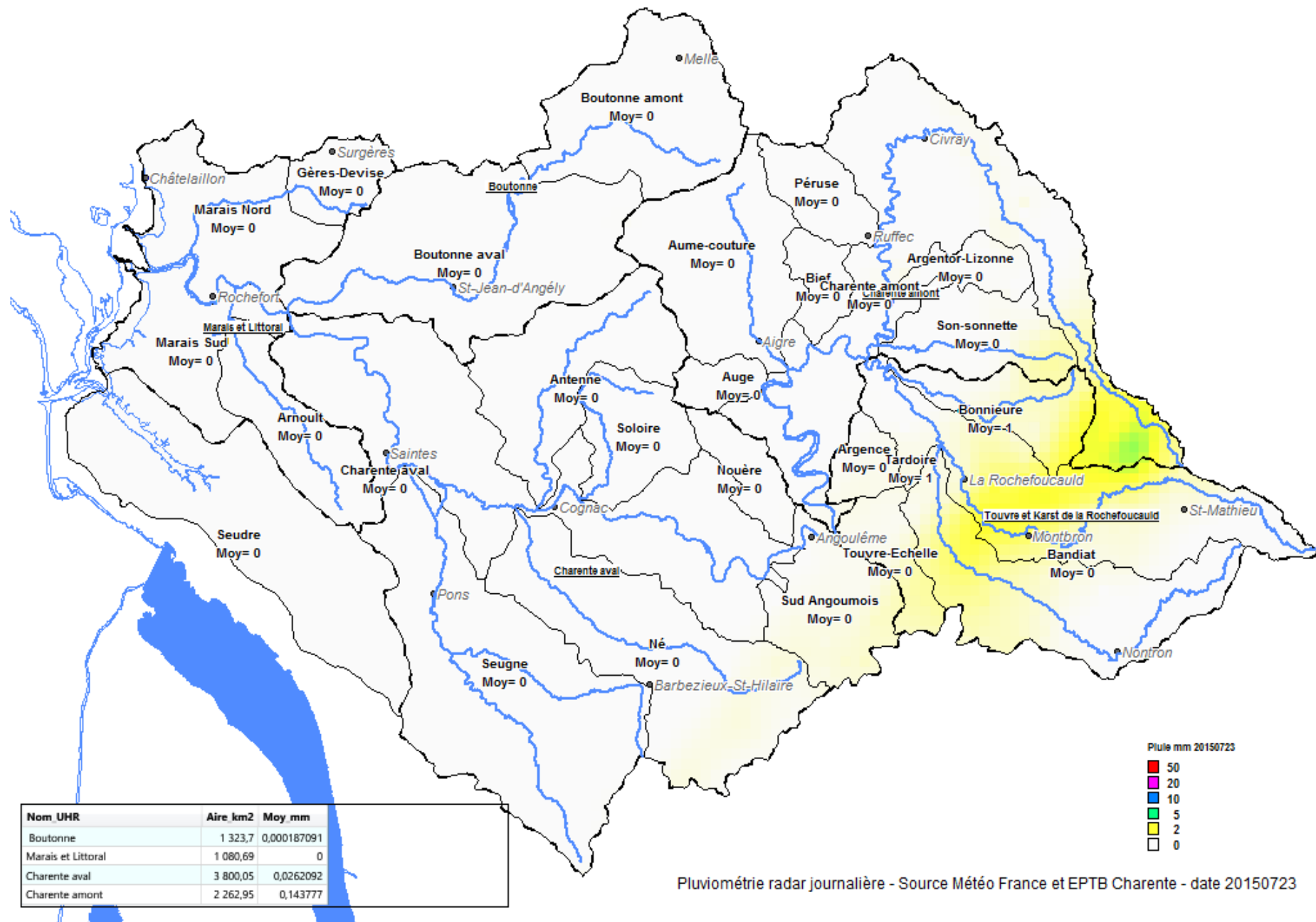


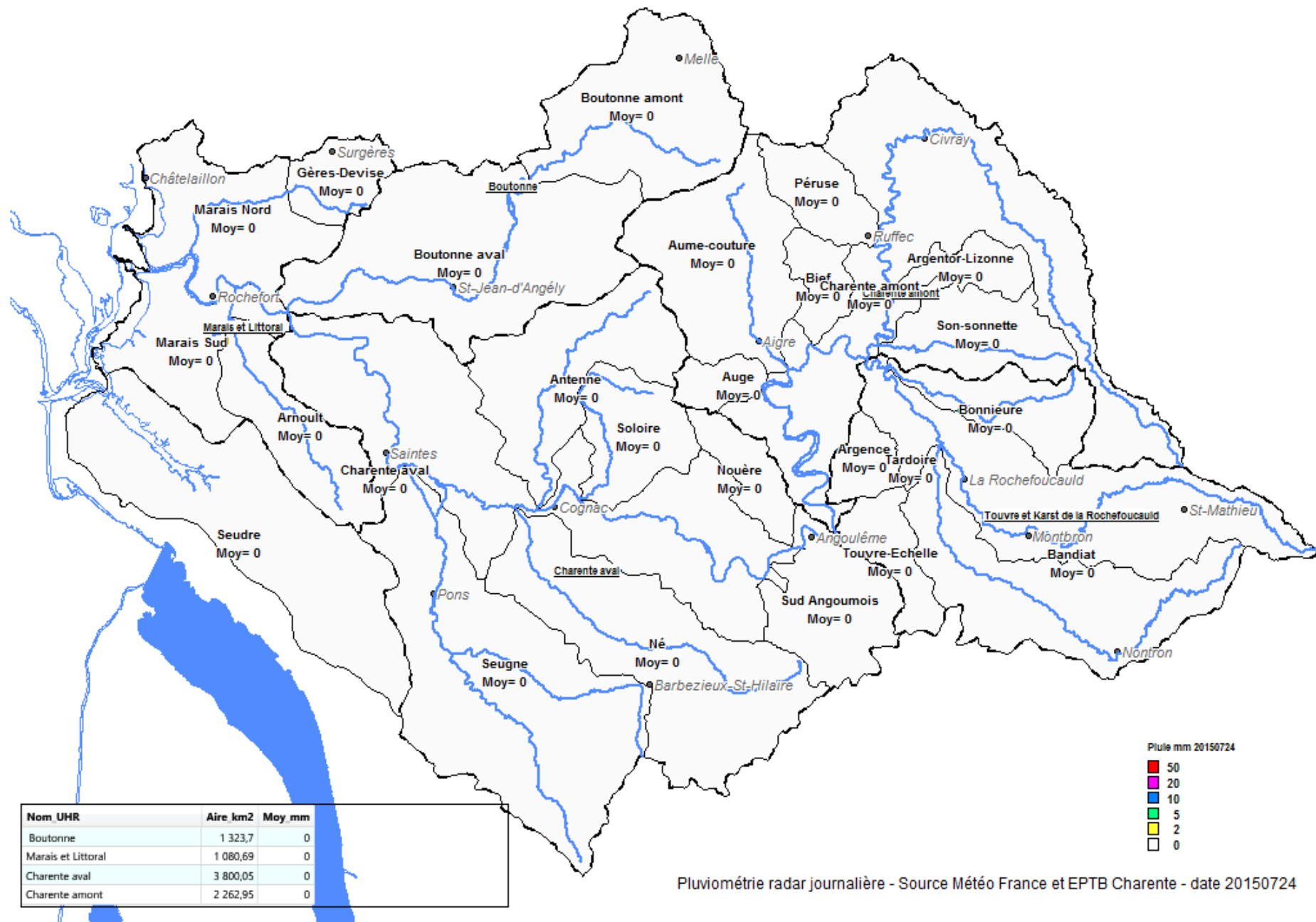




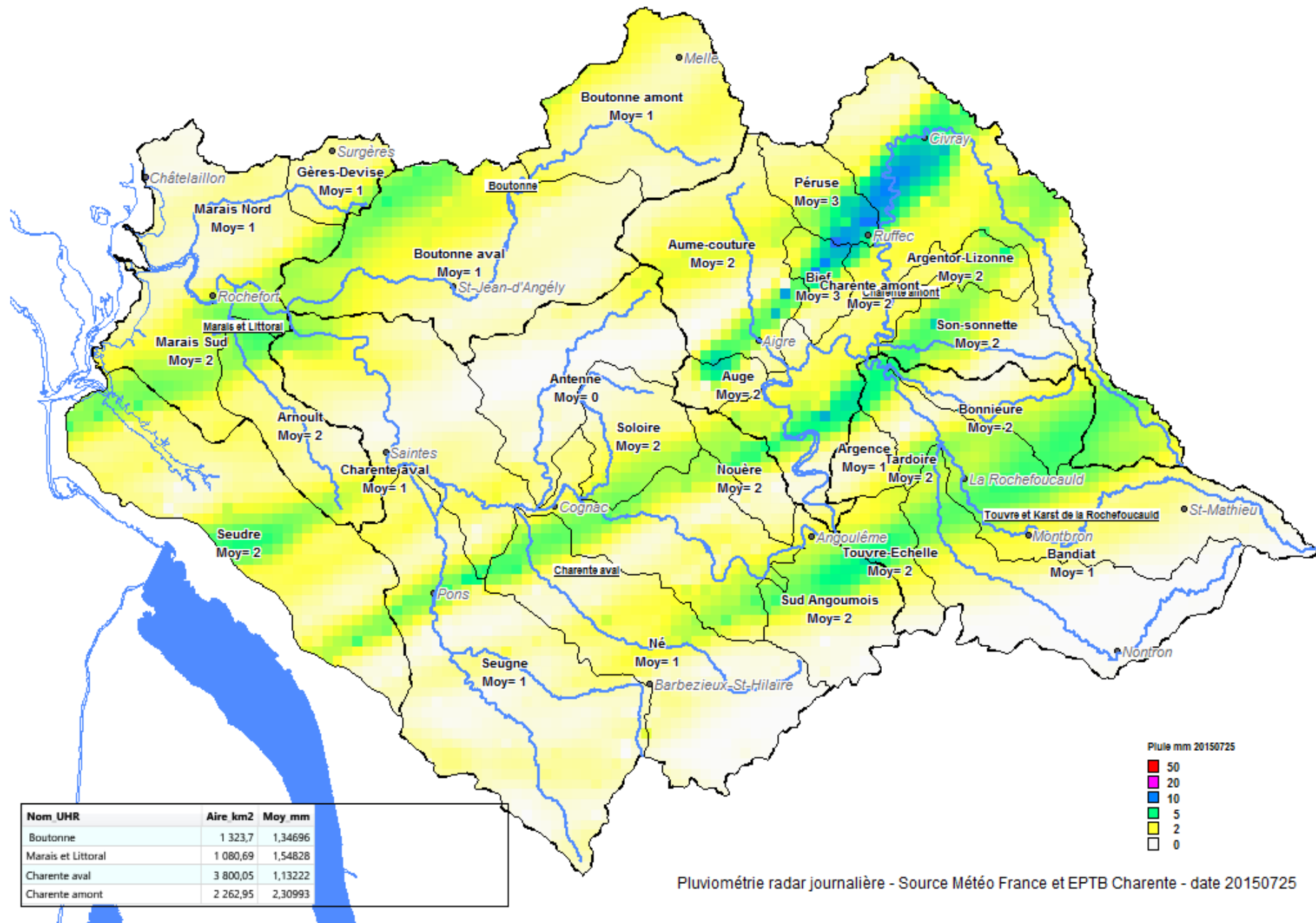


Pluimétrie radar journalière - Source Météo France et EPTB Charente - date 20150722

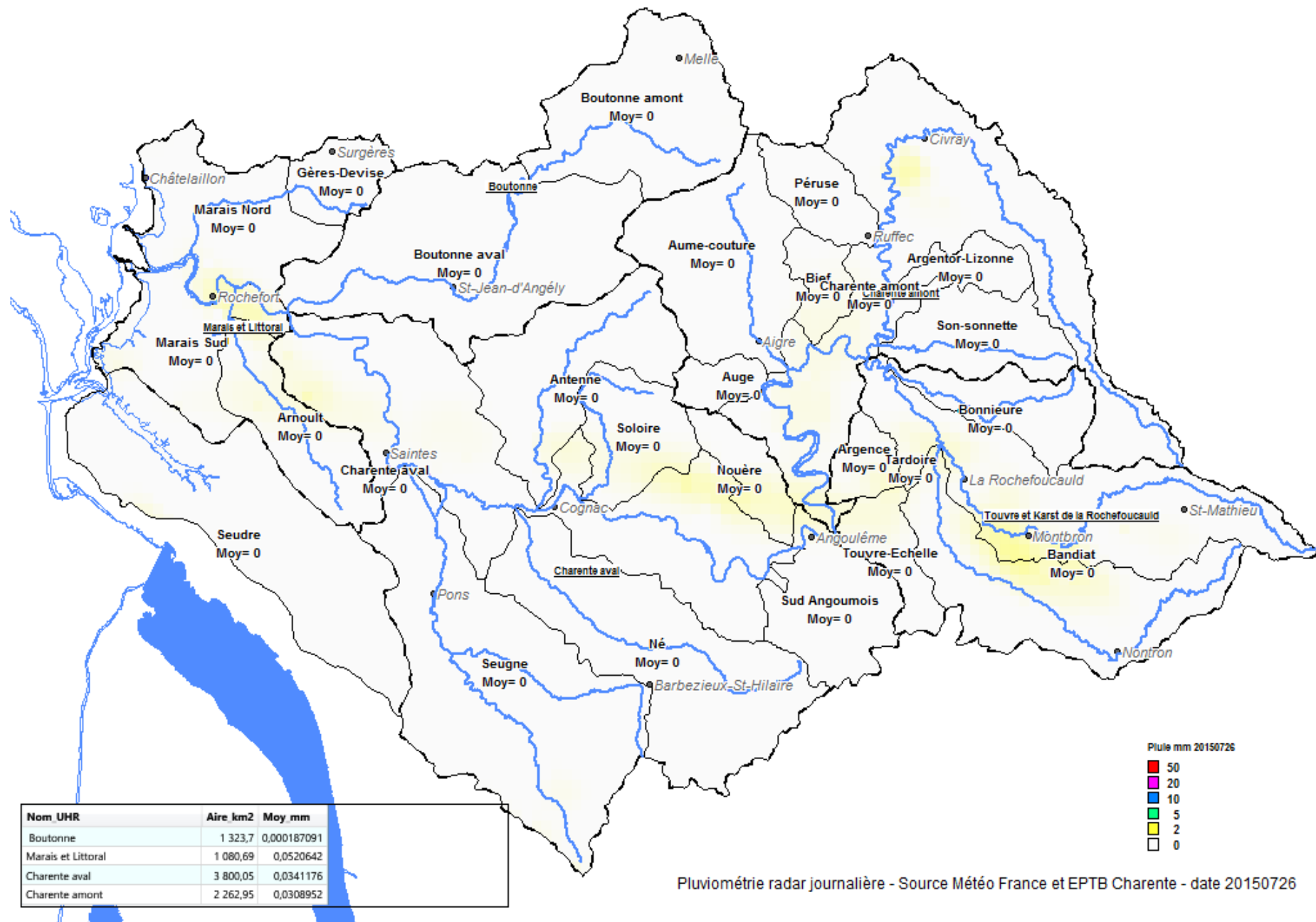


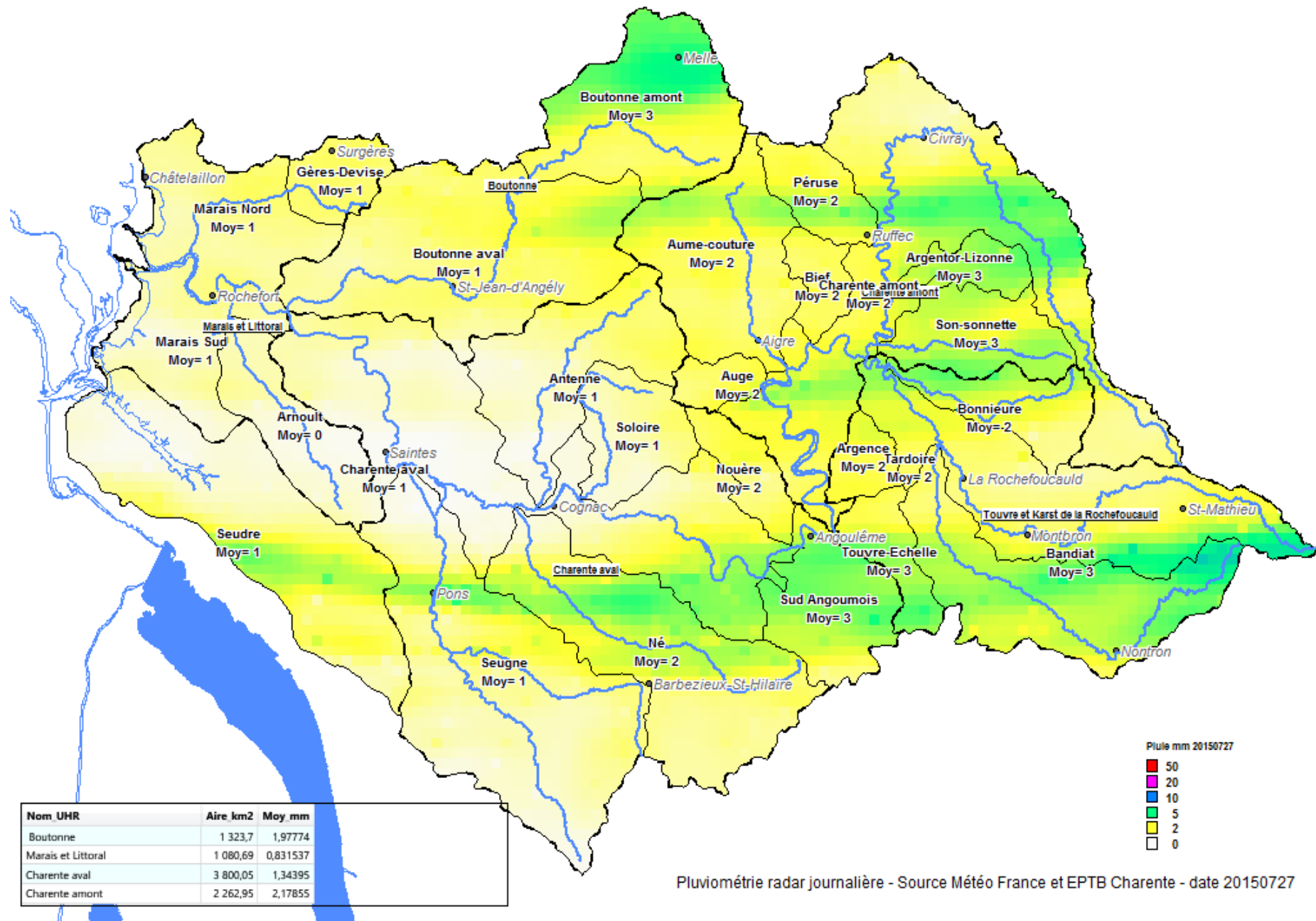




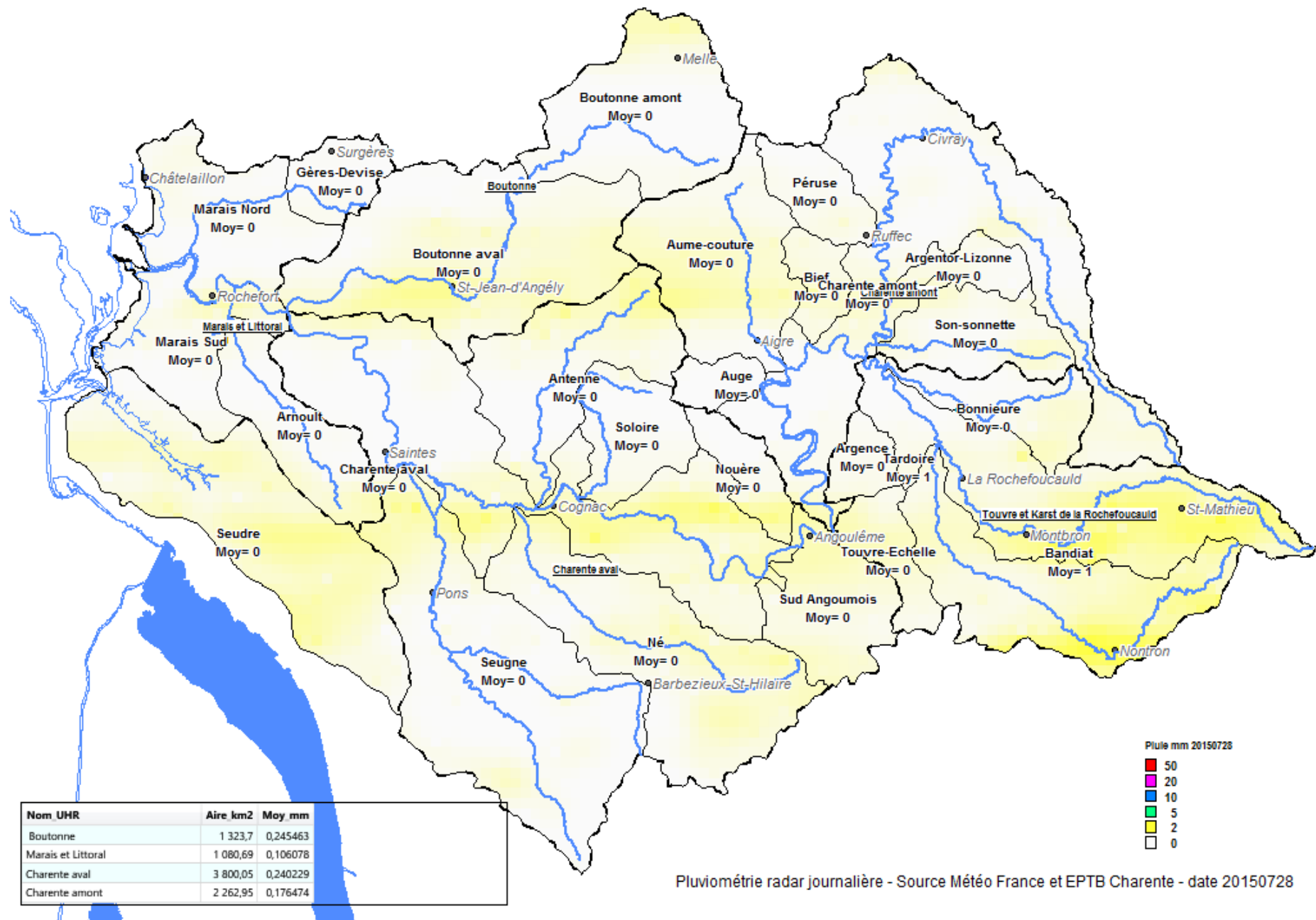


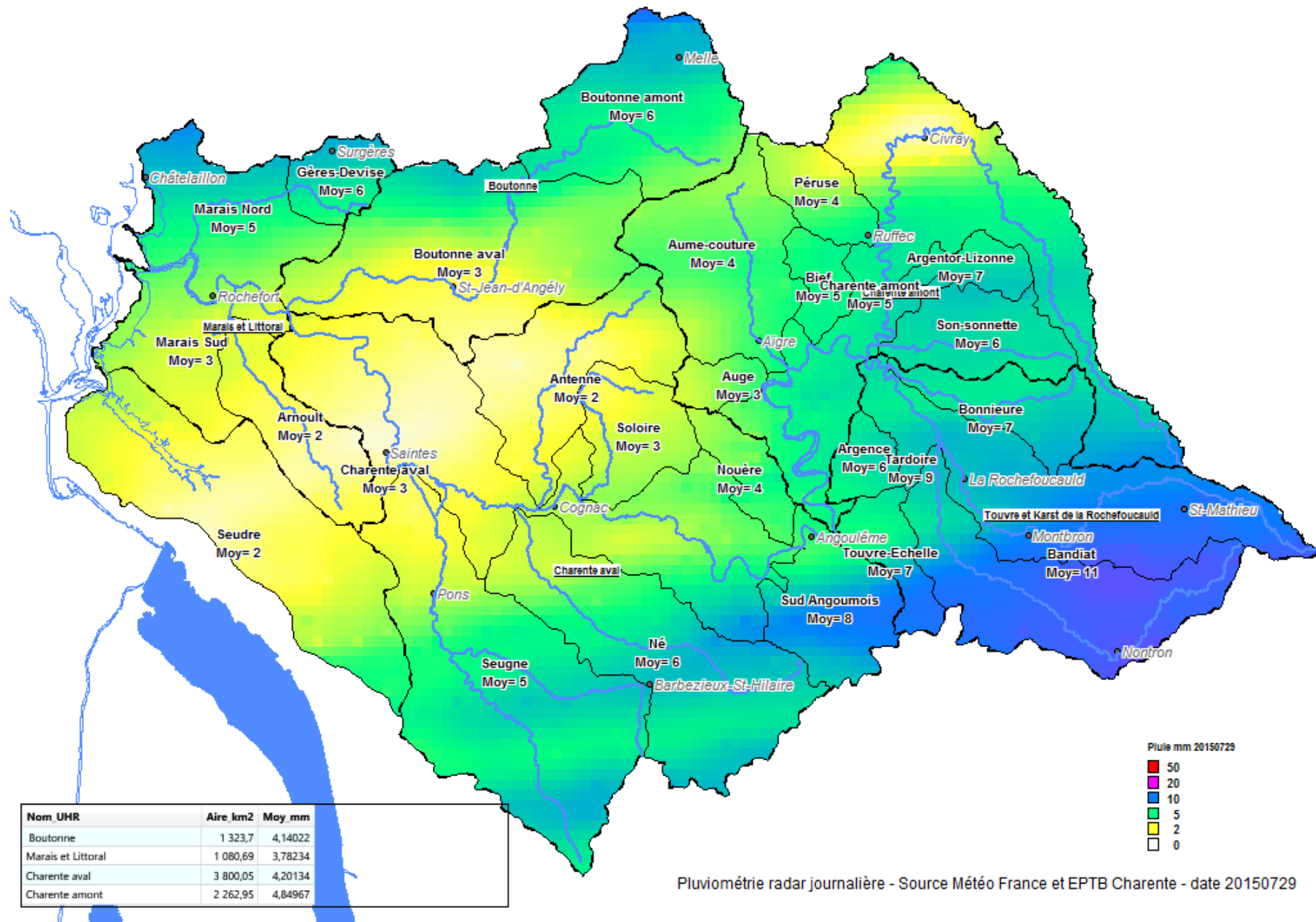
Pluviométrie radar journalière - Source Météo France et EPTB Charente - date 20150725

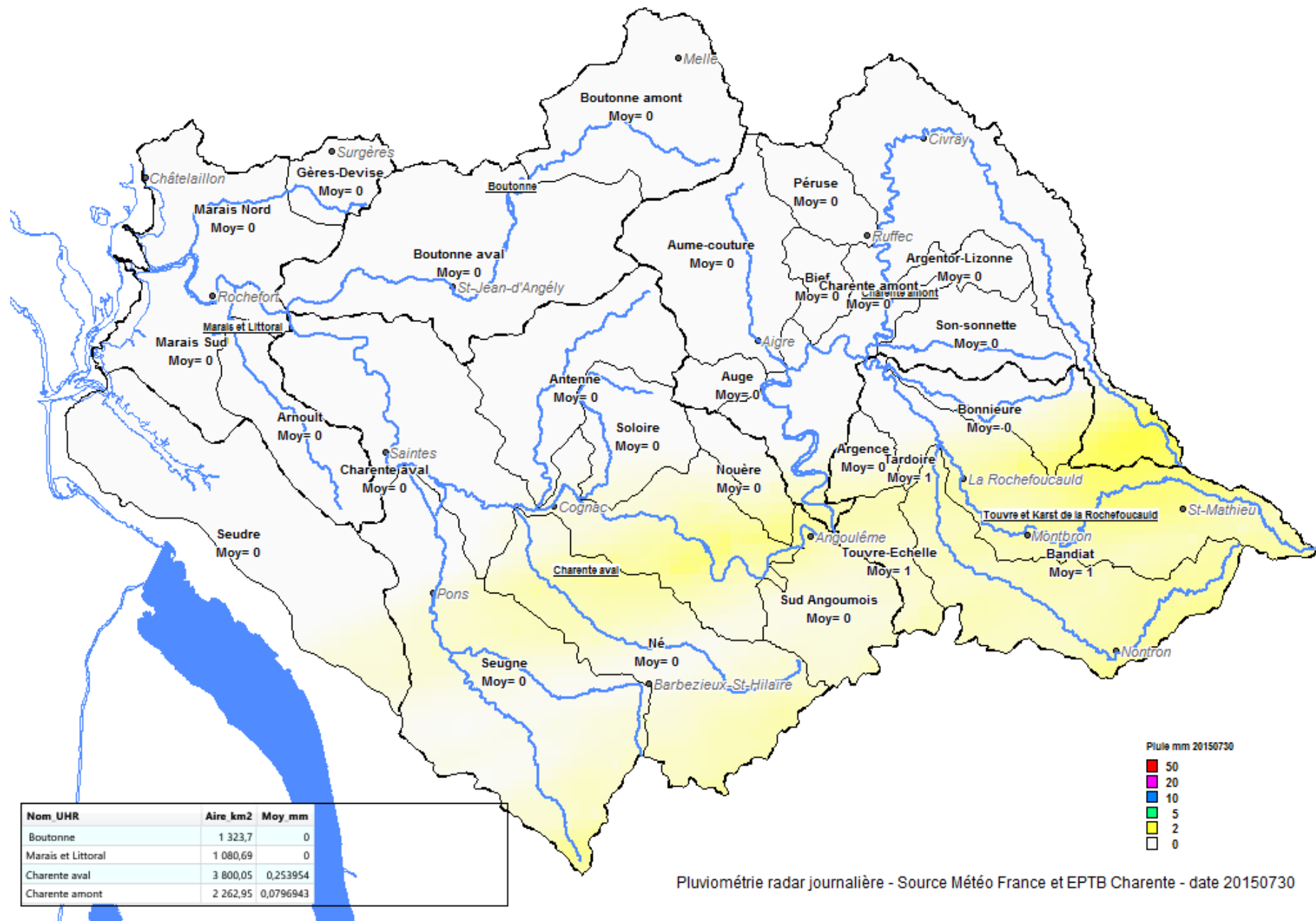




Pluviométrie radar journalière - Source Météo France et EPTB Charente - date 20150727







Pluviométrie radar journalière - Source Météo France et EPTB Charente - date 20150730

